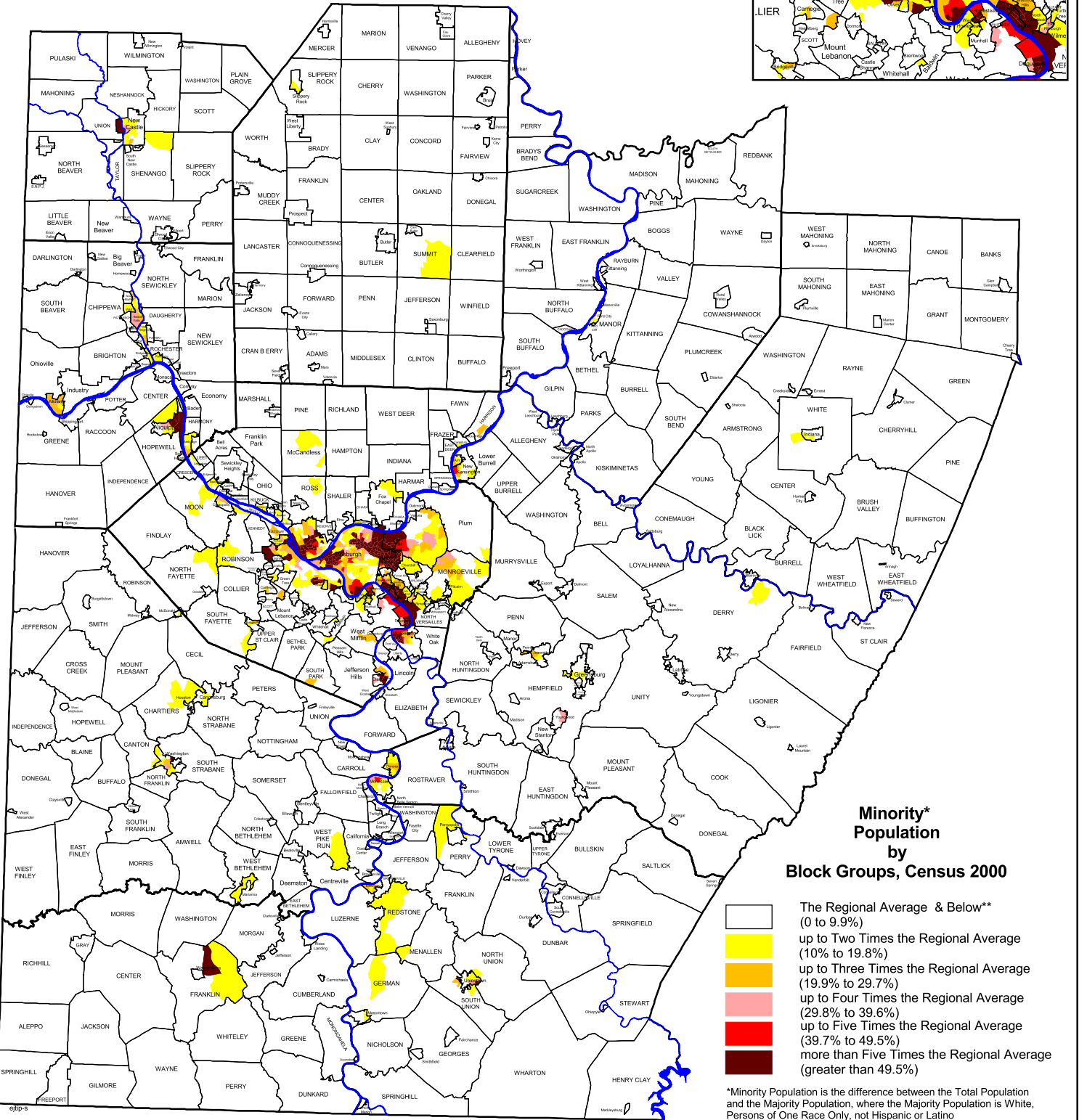
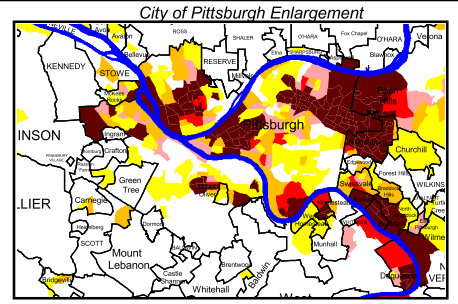


Minority Population by US Census Block Group

July, 2005



**Minority*
Population
by
Block Groups, Census 2000**

- The Regional Average & Below** (0 to 9.9%)
- up to Two Times the Regional Average (10% to 19.8%)
- up to Three Times the Regional Average (19.9% to 29.7%)
- up to Four Times the Regional Average (29.8% to 39.6%)
- up to Five Times the Regional Average (39.7% to 49.5%)
- more than Five Times the Regional Average (greater than 49.5%)

*Minority Population is the difference between the Total Population and the Majority Population, where the Majority Population is White, Persons of One Race Only, not Hispanic or Latino
 **The Regional Average of Minority Population is 9.9%

Map 1

