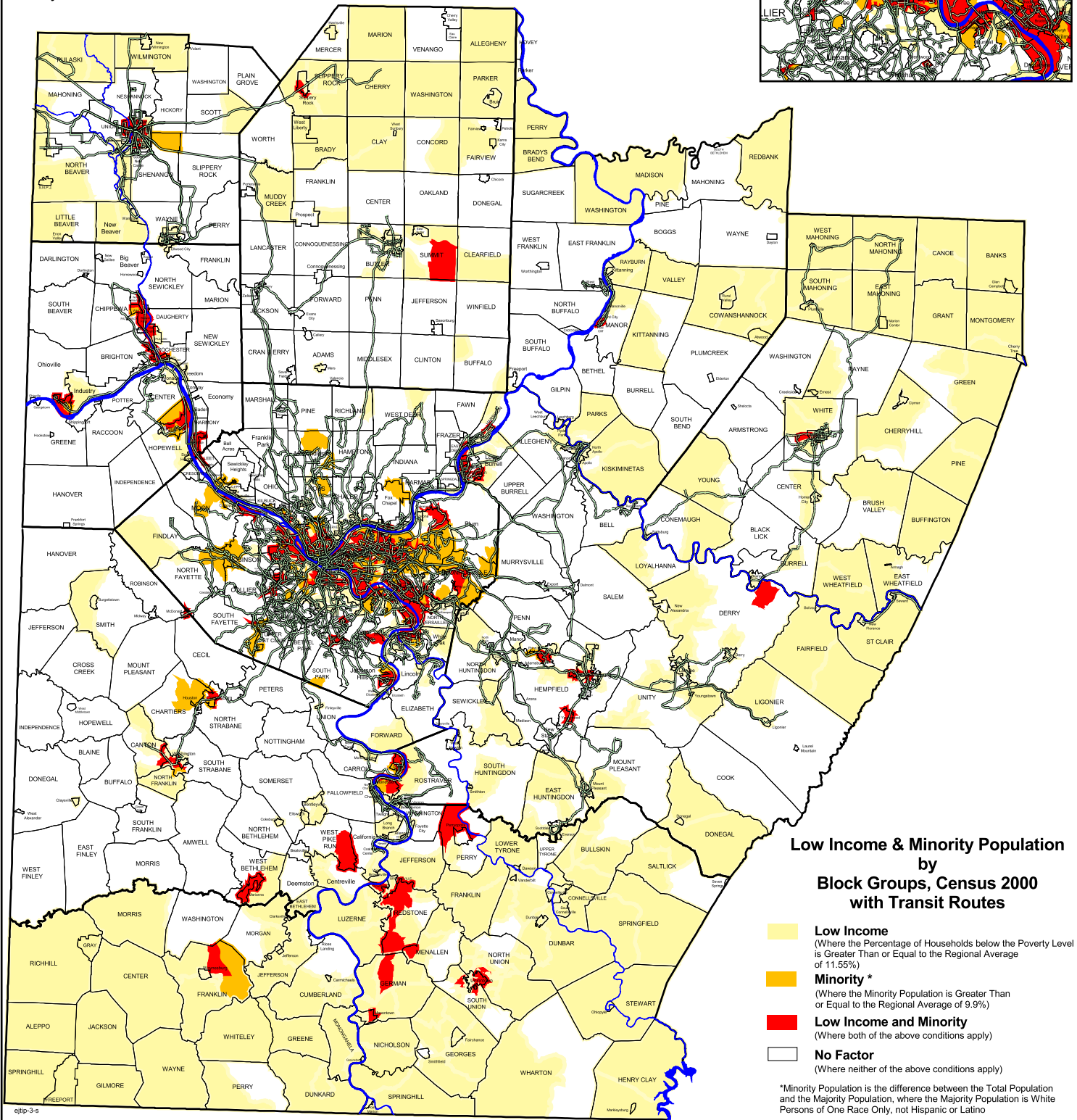
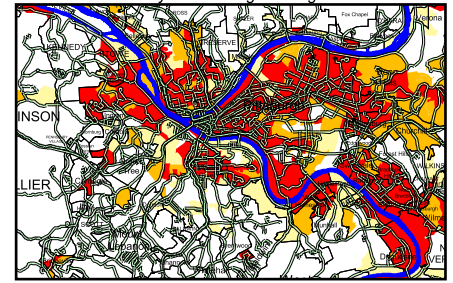


Low Income & Minority Population by US Census Block Group with Transit Routes

City of Pittsburgh Enlargement



Low Income & Minority Population by Block Groups, Census 2000 with Transit Routes

- Low Income**
(Where the Percentage of Households below the Poverty Level is Greater Than or Equal to the Regional Average of 11.55%)
- Minority ***
(Where the Minority Population is Greater Than or Equal to the Regional Average of 9.9%)
- Low Income and Minority**
(Where both of the above conditions apply)
- No Factor**
(Where neither of the above conditions apply)

*Minority Population is the difference between the Total Population and the Majority Population, where the Majority Population is White Persons of One Race Only, not Hispanic or Latino

 **Transit Routes**



Map 13