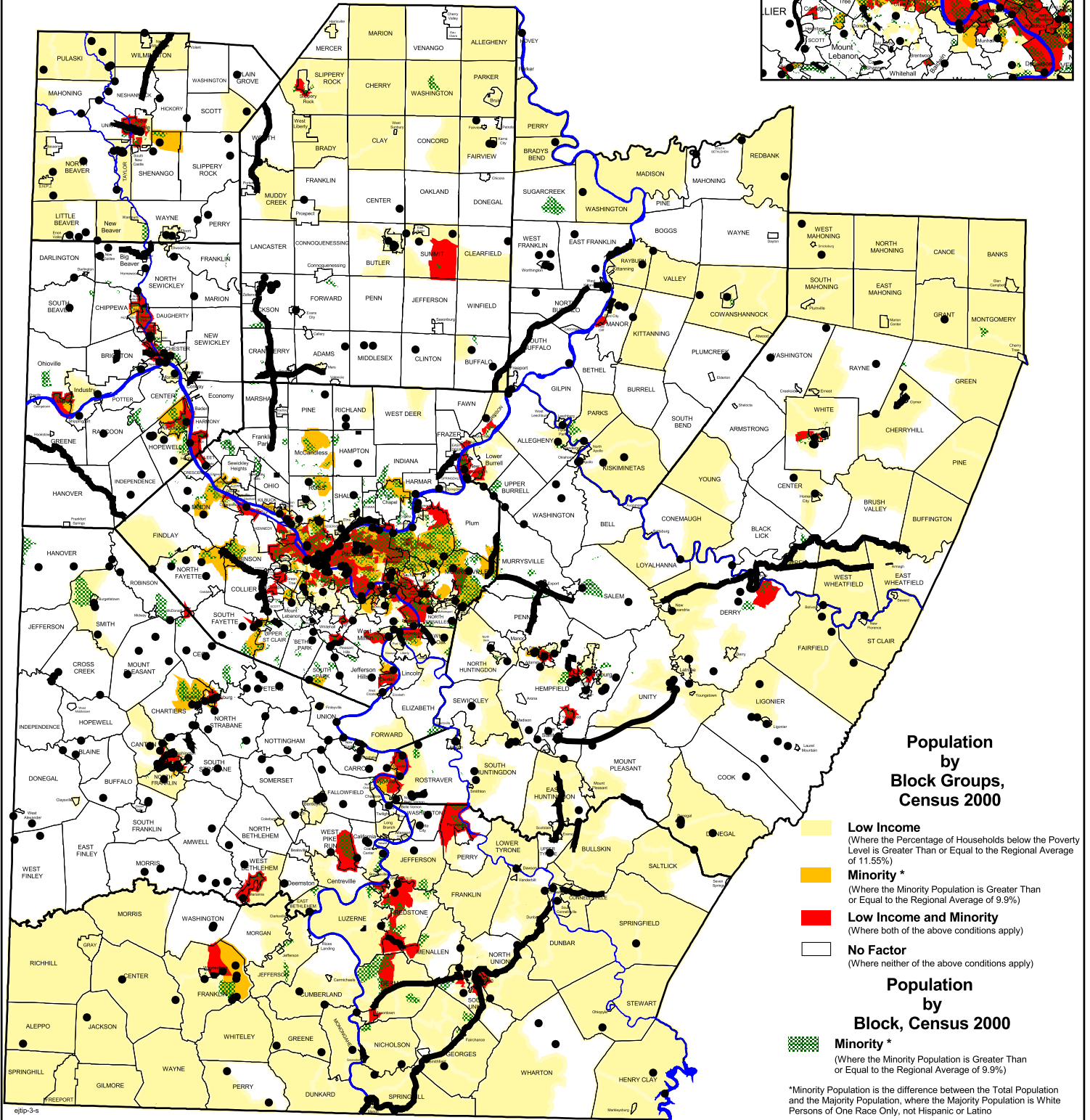
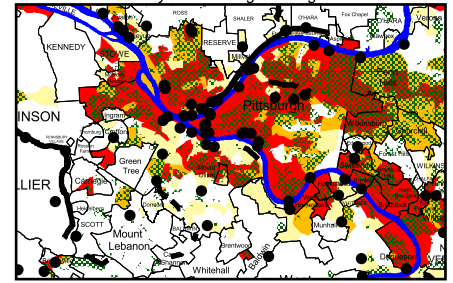




Low Income & Minority Population by US Census Block Group and Block with 2005 - 2008 TIP Projects

July, 2005

City of Pittsburgh Enlargement



Population by Block Groups, Census 2000

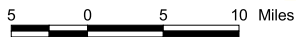
- Low Income**
(Where the Percentage of Households below the Poverty Level is Greater Than or Equal to the Regional Average of 11.55%)
- Minority ***
(Where the Minority Population is Greater Than or Equal to the Regional Average of 9.9%)
- Low Income and Minority**
(Where both of the above conditions apply)
- No Factor**
(Where neither of the above conditions apply)

Population by Block, Census 2000

- Minority ***
(Where the Minority Population is Greater Than or Equal to the Regional Average of 9.9%)

*Minority Population is the difference between the Total Population and the Majority Population, where the Majority Population is White Persons of One Race Only, not Hispanic or Latino

2005 - 2008 TIP Projects



Map 15