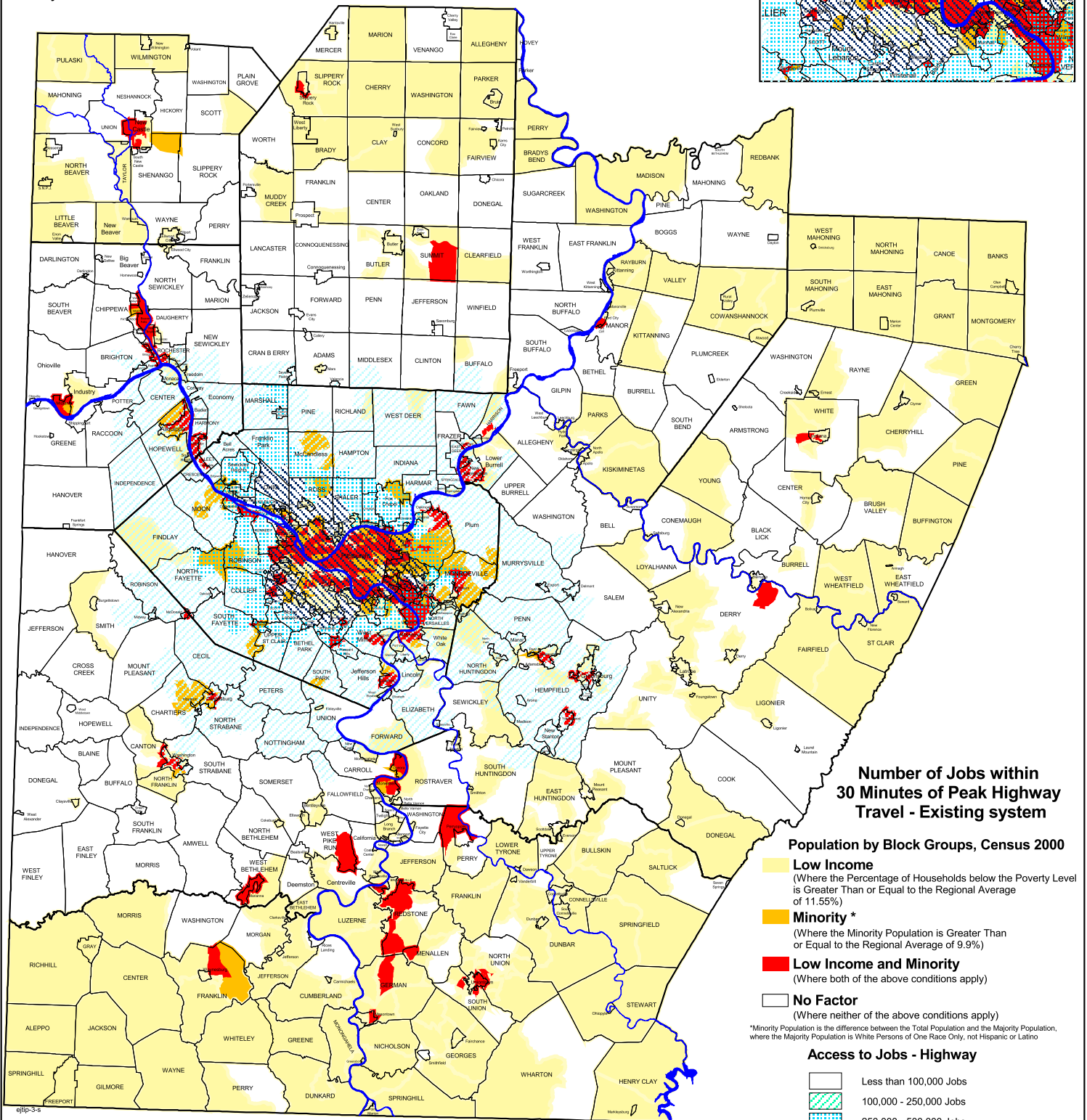
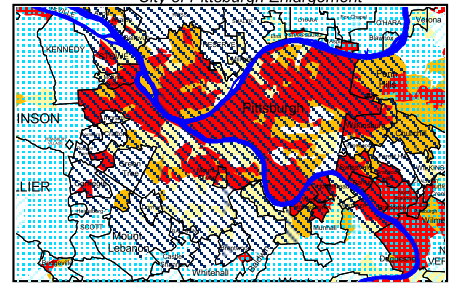


Low Income & Minority Population by US Census Block Group Access to Jobs (Highway)

July, 2005

City of Pittsburgh Enlargement



**Number of Jobs within
30 Minutes of Peak Highway
Travel - Existing system**

Population by Block Groups, Census 2000

- Low Income**
(Where the Percentage of Households below the Poverty Level is Greater Than or Equal to the Regional Average of 11.55%)
- Minority ***
(Where the Minority Population is Greater Than or Equal to the Regional Average of 9.9%)
- Low Income and Minority**
(Where both of the above conditions apply)
- No Factor**
(Where neither of the above conditions apply)

*Minority Population is the difference between the Total Population and the Majority Population, where the Majority Population is White Persons of One Race Only, not Hispanic or Latino

Access to Jobs - Highway

- Less than 100,000 Jobs
- 100,000 - 250,000 Jobs
- 250,000 - 500,000 Jobs
- More than 500,000 Jobs

5 0 5 10 Miles

Map 16