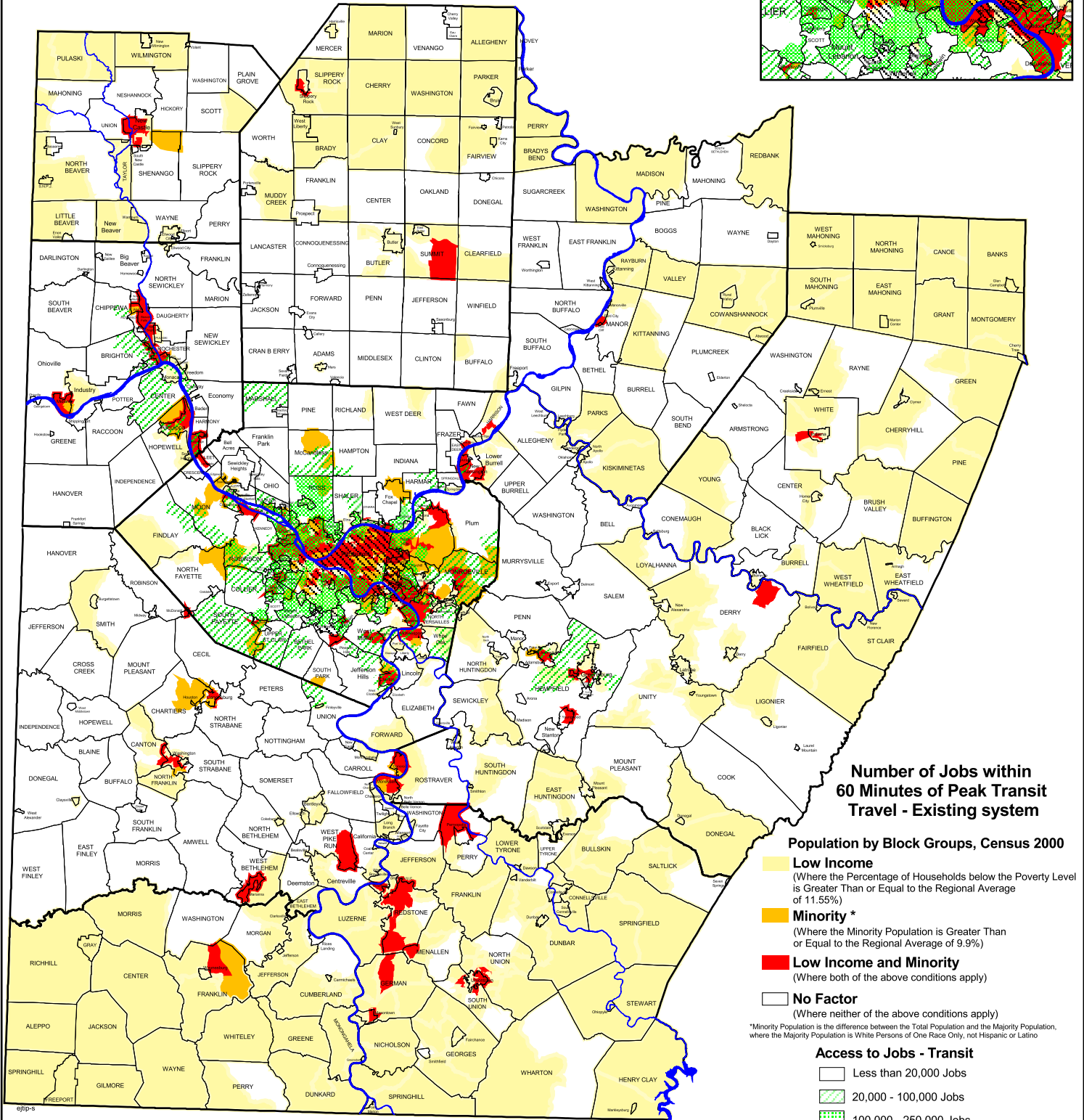
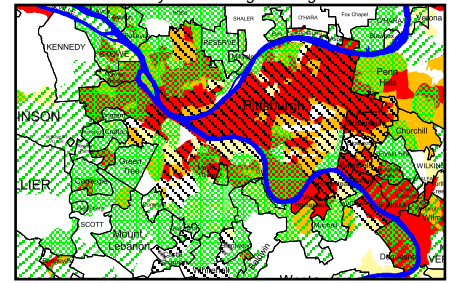


# Low Income & Minority Population by US Census Block Group Access to Jobs (Fixed Route Transit)

July, 2005

City of Pittsburgh Enlargement



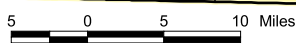
**Number of Jobs within  
60 Minutes of Peak Transit  
Travel - Existing system**

**Population by Block Groups, Census 2000**

- Low Income**  
(Where the Percentage of Households below the Poverty Level is Greater Than or Equal to the Regional Average of 11.55%)
  - Minority\***  
(Where the Minority Population is Greater Than or Equal to the Regional Average of 9.9%)
  - Low Income and Minority**  
(Where both of the above conditions apply)
  - No Factor**  
(Where neither of the above conditions apply)
- \*Minority Population is the difference between the Total Population and the Majority Population, where the Majority Population is White Persons of One Race Only, not Hispanic or Latino

**Access to Jobs - Transit**

- Less than 20,000 Jobs
- 20,000 - 100,000 Jobs
- 100,000 - 250,000 Jobs
- More than 250,000 Jobs



Map 17