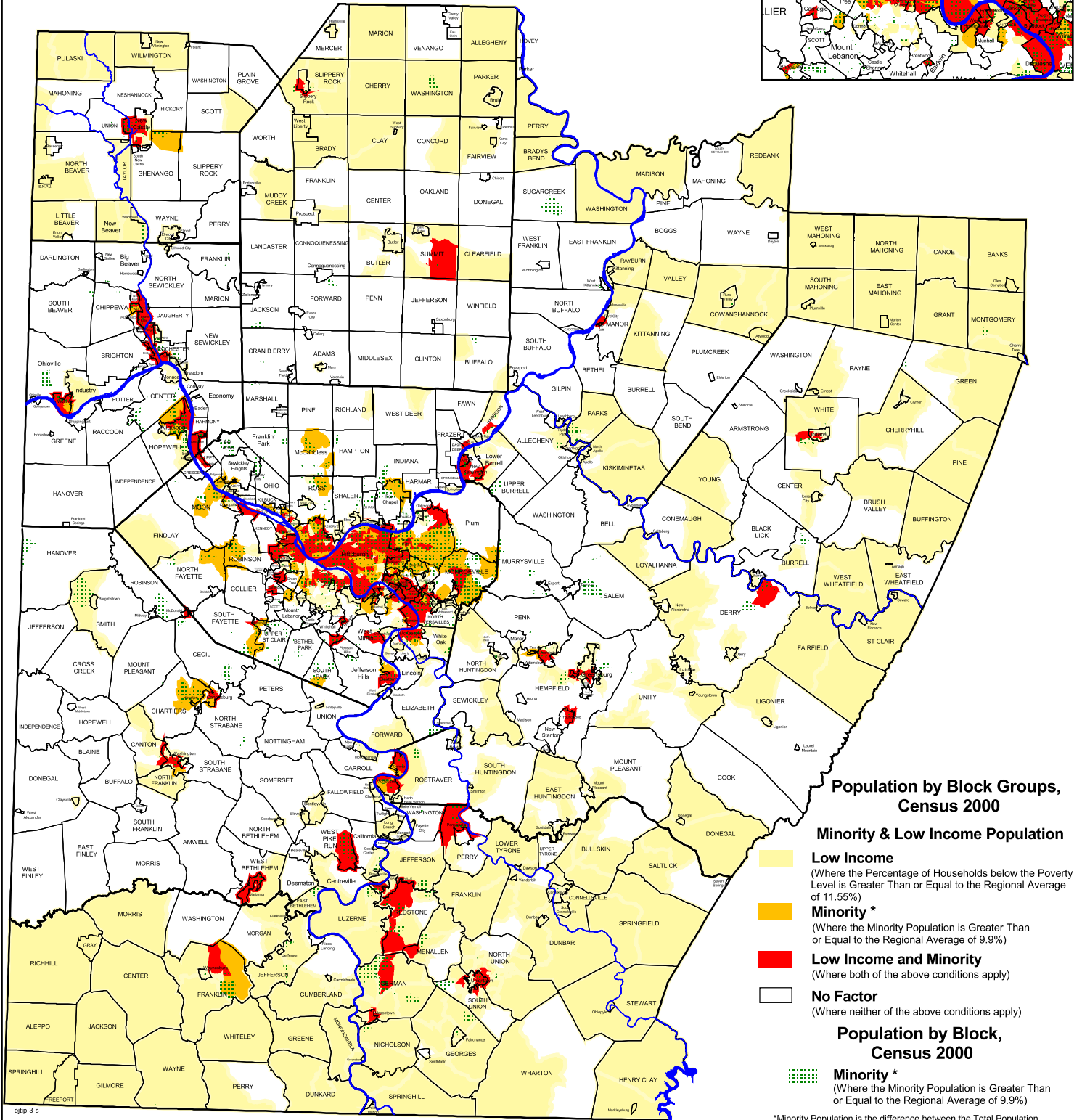
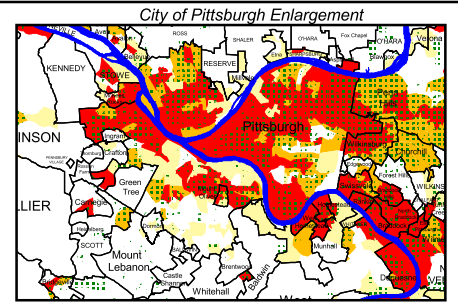




Low Income & Minority Population by US Census Block Group & Block

July, 2005



Population by Block Groups, Census 2000

Minority & Low Income Population

Low Income
(Where the Percentage of Households below the Poverty Level is Greater Than or Equal to the Regional Average of 11.55%)

Minority *
(Where the Minority Population is Greater Than or Equal to the Regional Average of 9.9%)

Low Income and Minority
(Where both of the above conditions apply)

Population by Block, Census 2000

Minority *
(Where the Minority Population is Greater Than or Equal to the Regional Average of 9.9%)

*Minority Population is the difference between the Total Population and the Majority Population, where the Majority Population is White, Persons of One Race Only, not Hispanic or Latino

Map 4