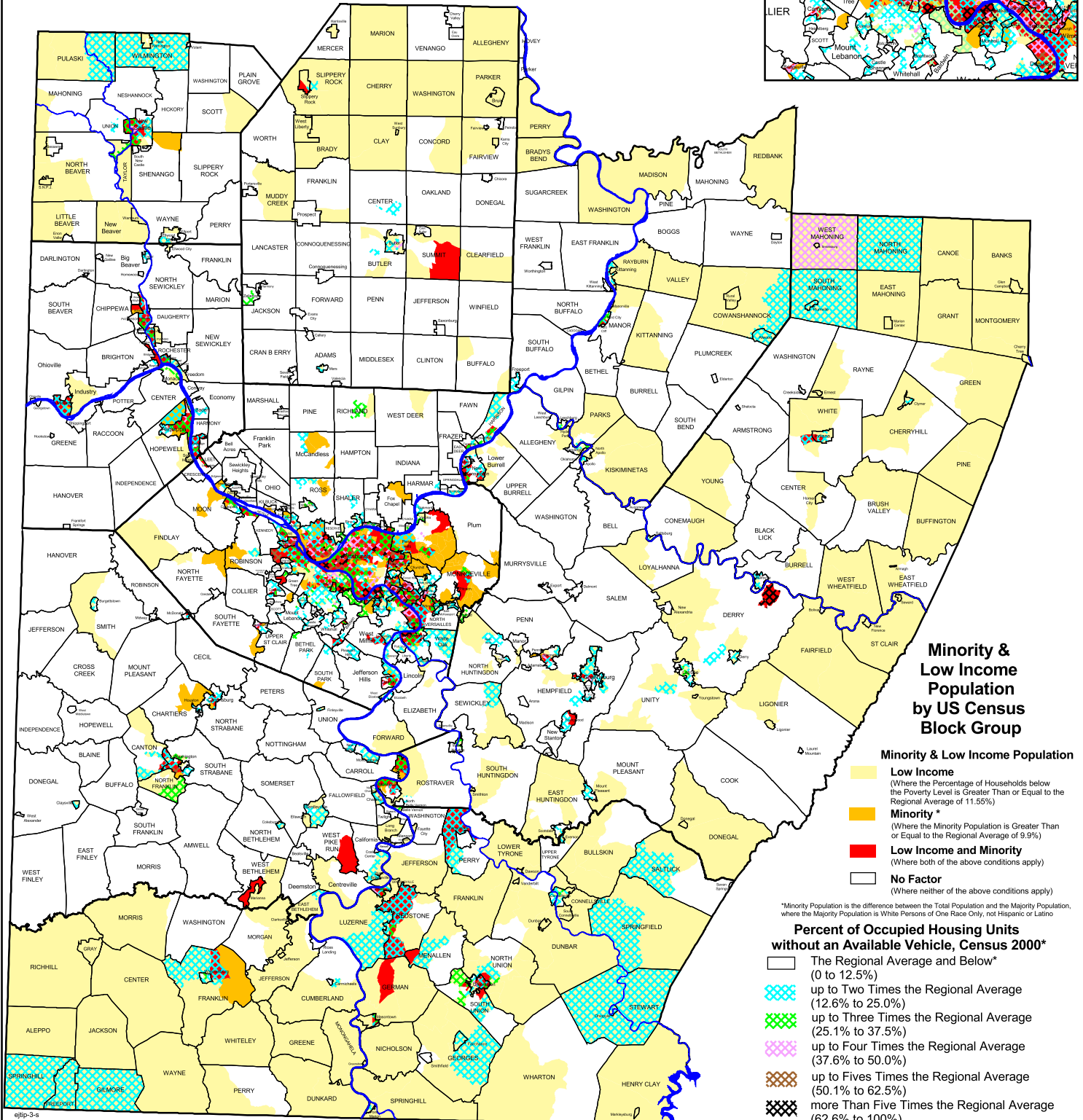
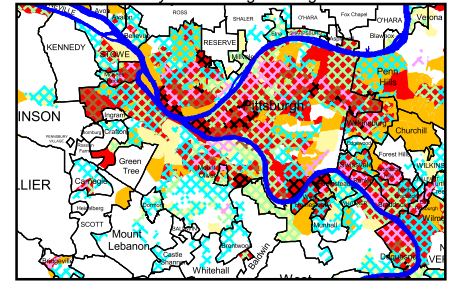


July, 2005

# Low Income & Minority Population by US Census Block Group with Percent of Occupied Housing Units without an Available Vehicle

City of Pittsburgh Enlargement



## Minority & Low Income Population by US Census Block Group

- Minority & Low Income Population**
- Low Income**  
(Where the Percentage of Households below the Poverty Level is Greater Than or Equal to the Regional Average of 11.55%)
  - Minority\***  
(Where the Minority Population is Greater Than or Equal to the Regional Average of 9.9%)
  - Low Income and Minority**  
(Where both of the above conditions apply)
  - No Factor**  
(Where neither of the above conditions apply)

\*Minority Population is the difference between the Total Population and the Majority Population, where the Majority Population is White Persons of One Race Only, not Hispanic or Latino

## Percent of Occupied Housing Units without an Available Vehicle, Census 2000\*

- The Regional Average and Below\*  
(0 to 12.5%)
- up to Two Times the Regional Average  
(12.6% to 25.0%)
- up to Three Times the Regional Average  
(25.1% to 37.5%)
- up to Four Times the Regional Average  
(37.6% to 50.0%)
- up to Five Times the Regional Average  
(50.1% to 62.5%)
- more Than Five Times the Regional Average  
(62.6% to 100%)

\*Available Vehicles = Passenger cars, vans, and pickup or panel trucks of 1-ton capacity or less kept at home and available for the use of household members. The Regional Average of Occupied Housing Units without an Available Vehicle is 12.5%

Map 6

