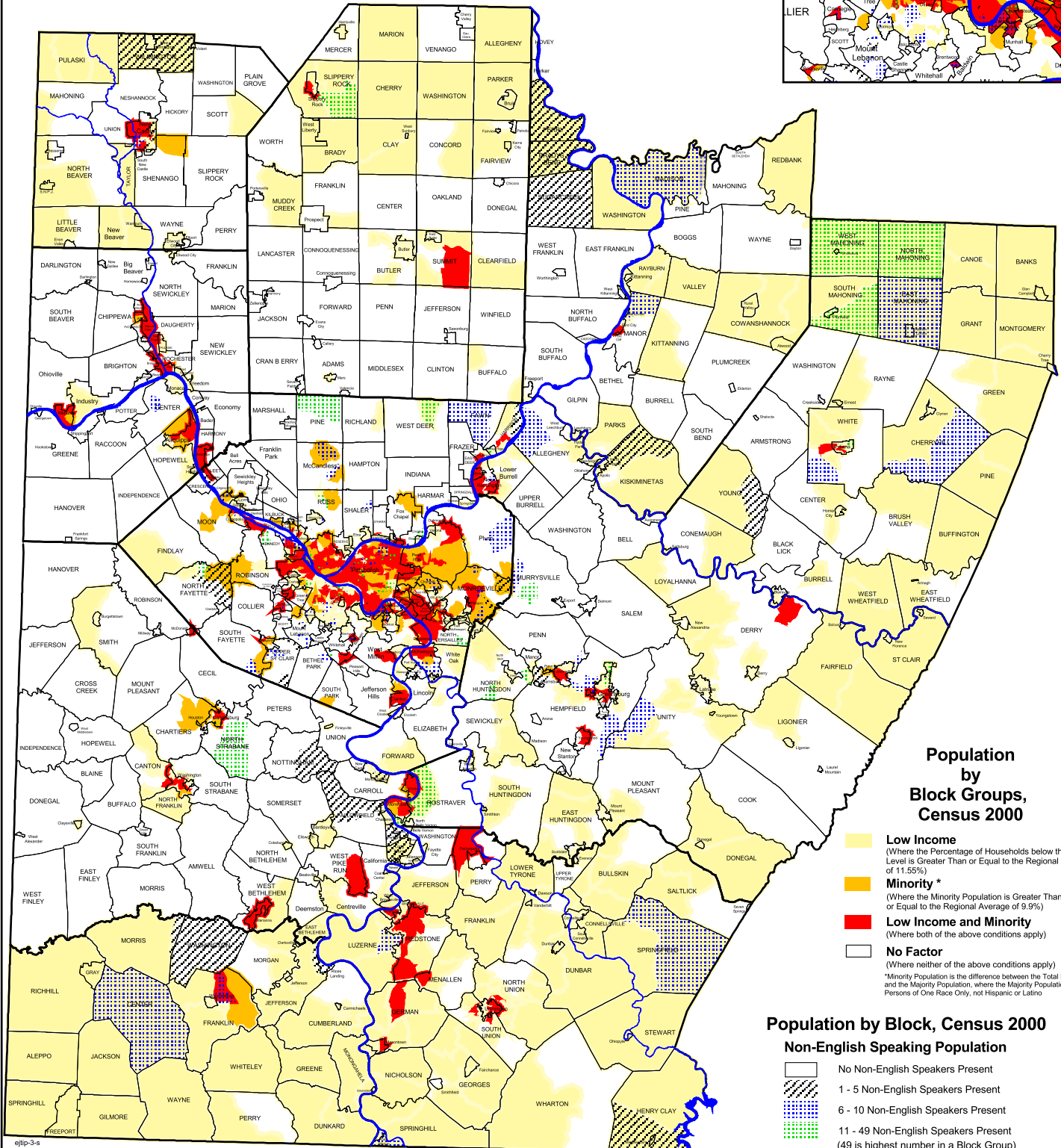
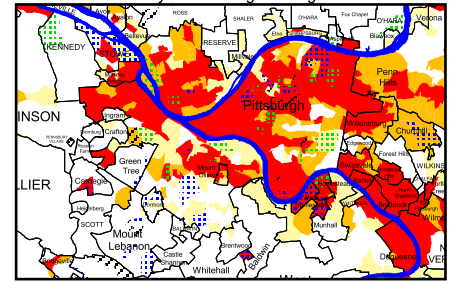


# Low Income & Minority Population by US Census Block Group with the Presence of Non-English Speaking Population

City of Pittsburgh Enlargement



### Population by Block Groups, Census 2000

- Low Income**  
(Where the Percentage of Households below the Poverty Level is Greater Than or Equal to the Regional Average of 11.55%)
  - Minority \***  
(Where the Minority Population is Greater Than or Equal to the Regional Average of 9.9%)
  - Low Income and Minority**  
(Where both of the above conditions apply)
  - No Factor**  
(Where neither of the above conditions apply)
- \*Minority Population is the difference between the Total Population and the Majority Population, where the Majority Population is White Persons of One Race Only, not Hispanic or Latino

### Population by Block, Census 2000 Non-English Speaking Population

- No Non-English Speakers Present
- 1 - 5 Non-English Speakers Present
- 6 - 10 Non-English Speakers Present
- 11 - 49 Non-English Speakers Present  
(49 is highest number in a Block Group)

\*The Total Population, Aged 5 Years or Older, that Speak English "Not at All" for the Four Different Language Categories

Map 9

