



SOUTHWESTERN PENNSYLVANIA COMMISSION

Two Chatham Center • Suite 500 • 112 Washington Place • Pittsburgh, PA 15219-3451

412-391-5590 phone • 412-391-9160 fax • www.spcregion.org

Southwestern Pennsylvania Commission

Officers:

Washington County
Larry Maggi
Chairman

Allegheny County
Rich Fitzgerald
Vice-Chairman

Beaver County
Tony Amadio
Secretary-Treasurer

Executive Committee:

Allegheny County
Rich Fitzgerald

Armstrong County
Pat Fabian

Beaver County
Tony Amadio

Butler County
Leslie A. Osche

City of Pittsburgh
William Peduto

Fayette County
Vincent A. Vicites

Greene County
Dave Coder

Indiana County
Rodney D. Ruddock

Lawrence County
Steve Craig

Washington County
Larry Maggi

Westmoreland County
Gina Cerilli

At-Large
Charles W. Anderson
Ricky V. Burgess
Lynn Heckman

Governor's Office
Jessica Walls-Lavelle

PA Dept. of Community &
Economic Development
Johnna A. Pro

PA Dept. of Transportation
James D. Ritzman

Executive Director
James R. Hassinger

April 29, 2019 at 4:30 p.m.,
Suite 400, Two Chatham Center, Pittsburgh, PA 15219

AGENDA

1. Call to Order
 - a. Quorum
 - b. Any Conflict of Interest Declarations on Action Items
2. Action on Minutes of the January 28th Meeting
3. Public Comment
4. Financial Report – Vince Massaro
5. Staff Profile – Tom Klevan/Leann Chaney
6. Action on Resolution 2-19 to Adopt the 2019 Regional Active Transportation Plan – Leann Chaney
7. Action on Resolution 3-19 to Proclaim May, 2019 as “National Bike Month” in Southwestern Pennsylvania – Leann Chaney
8. Action on Resolution 4-19 to Proclaim May, 2019 as “CommuteInfo Commute Options Awareness Month” in Southwestern Pennsylvania – Anthony Hickton
9. Update on the Plan “*Smart Moves for a Changing Region*” – Andy Waple
10. 2020 Census / Complete Count Committees (CCC)
Kristin Baum, Senior Data Analyst, SPC
Sheila Beasley, Partnership Specialist, U. S. Census Bureau
Andréa Stanford, Assistant County Manager, Allegheny County
Feyi Alabi, Special Initiatives Manager, Office of Mayor William Peduto
Jessica Mooney, Manager of Special Projects, Office of County Executive
Rich Fitzgerald
11. Committee Reports
12. Other Business/Announcements – Jim Hassinger
Next Meeting Date – **June 24, 2019**
13. New Business
14. Adjourn

Southwestern Pennsylvania Commission
Minutes of the Meeting
January 28, 2019 – 4:30 p.m.
Two Chatham Center • Suite 400 • 112 Washington Place • Pittsburgh, PA 15219

The one hundred thirty-third meeting of the Southwestern Pennsylvania Commission was called to order by Chairman Larry Maggi.

Members present: Darin Alviano, Tony Amadio, Chuck Anderson, Alan Blahovec, Kevin Boozel, Scott Bricker, Tom Ceraso, Gina Cerilli, Dave Coder, Steve Craig, Sandie Egley, Rich Fitzgerald, Jim Gagliano, Kimberly Geyer, Mark Gordon, Kelly Gray, Lynn Heckman, Mark Hilliard, Charles Jones, Fred Junko, Jessica Walls-Lavelle, Clifford Levine, Dave Lohr, Larry Maggi, Amy McKinney, Leslie Osche, Scott Putnam, Johnna Pro, Rodney Ruddock, Aurora Sharrard, Byron Stauffer, Archie Trader, Blair Zimmerman, and Christopher Wheat (via phone).

Others present: Ann Ogoreuc, Allegheny County.

Staff: Jim Hassinger, Dan Alwine, Kirk Brethauer, Dom D’Andrea, Ryan Gordon, Chuck Imbrogno, Claire Jordy, Tom Klevan, Vince Massaro, Shannon O’Connell, Dee Pamplin, Abby Stark, Kay Tomko, Lew Villotti, and Andy Waple.

1. Chairman Maggi called to order the January 28, 2019 meeting of the Southwestern Pennsylvania Commission
 - a. Quorum – There being a quorum present the meeting proceeded
 - b. Any Conflict of Interest Declarations on Action Items – None.
 2. Action on Minutes of the December 10, 2018 Meeting
- A motion was made to approve the minutes of the December 10, 2018 meeting by Commissioner Chuck Anderson which was seconded by Rich Fitzgerald. The affirmative vote was unanimous.
3. Public Comment – None
 4. Staff Profile – Lew Villotti/Claire Jordy

Mr. Villotti introduced Ms. Clare Jordy as the new Water Resource Planner at SPC.

Claire was born and raised in Taos, New Mexico. She attended Dickinson College in Carlisle, PA and graduated in 2017 with a B. A. in Environmental Studies. It was a major in interdisciplinary studies so she took a lot of hard and social sciences. She worked at the Alliance for Aquatic Resource Monitoring; which is a part of Dickinson College working to train citizens on citizen science monitoring; water quality monitoring done by citizens. Her first year there as a K-12 she educator created curriculum, worked with teachers and also taught the curriculum. During my second year, she did research and workshops training people on water quality monitoring to look for impacts from fracking. That is how she got interested in water quality and got a lot of skills testing water quality. After her junior year in college, she interned at the Community Harvest Project in Harvard, MA. She was the orchard intern working in the vegetable garden and apple orchard helping to take care of 3,000 trees on 75 acres. She learned a lot about food justice and apples which is a passion of mine. After graduating college, she worked in Knoxville, TN and

worked at AmeriCorps in the Knox County Government's Stormwater Department. Her main role was data and GIS collection which is where she became interested in water quality.

Outside of work her main interests are animals, community, and nature where she engages with friends or by volunteering or at home with her cat.

Her work at SPC consists of community assistance, planning and attending holistic floodplain management workshops, and developing educational materials for the website municipalities on water treatments.

Chairman Maggi introduced and welcomed two new members to the Commission. From the Governor's office is Jessica Walls-Lavelle and from Indiana County Mark Hilliard.

5. Financial Report – Vince Massaro

Mr. Massaro reported on the financials for the period July 1, 2018 to December 31, 2018 a six month period which is the adopted updated budget. It reflects the operations of the Southwestern Pennsylvania Commission and the Corporation. The total project revenues \$13,211.770 actual encumbered revenues to date versus the budget of \$8,124,000 or 61.50% of the budget recorded to date. Being a balanced budget the expenditures also total \$13,211.770 actual encumbered to date \$8,124,000 or 61.50% of the budget. Our funding agencies, planning project grants and contracts have been fully executed and are in hand. Project expenditures have been encumbered as shown on the report. These relate to contractual costs set by signed contracts or work orders. There being no questions, the Commission accepted the financial report as presented.

6. Annual Report Presentation – Shannon O'Connell

Ms. O'Connell explained this video presentation of SPC's 2018 Annual Report that it is much more to the point about the achievements and milestones and it is much shorter than previous reports. There is also a written report in today's handout and it will be on our website.

7. Long-Range Plan Update – Andy Waple/Lew Villotti

Mr. Waple reaffirmed the fact that the Plan update has been ongoing for almost a year; and we will be culminating everything in June of 2019 with the Plan adoption. At the end of the presentation we will ask for your endorsement of the vision goals, and strategy to drive the long Range Plan.

A recap of where we stand, and what we have left to accomplish before the June 24th Plan adoption. At our last meeting on December 10th we launched a strategy priority survey aimed at gathering feedback on the strategies as to the regions priorities within the set of 24 important strategies goals and vision. We are half way through our Long Range Plan Development Plan Workshops with the member Counties, City of Pittsburgh, Transit Providers, TMAs, PennDOT and SPC. We gathered the candidate projects and discussed public input gathered thus far in the long range plan planning process. After one more round of meetings we hope to gather consensus on the list of projects to be included in the Plan.

Mr. Waple reviewed the Vision and three Goals of the Plan - Connected Mobility, Resilient Communities, and a Globally Competitive Economy.

Mr Waple discussed the 10 Federal Planning Factors, which with the Vision, Goals and Strategies form the underlying objectives for the entire MPO planning process. Mr. Waple pointed out that planning factors are consistent with the proposed Vision, Goal Area and Strategies that we are asking you to endorse today.

In many cases the Strategies, Vision and Goals build upon and enhance the federal planning factors.

Federal Planning Factors

1. Support economic vitality
2. Increase safety of the transportation system
3. Increase security of transportation system
4. Increase accessibility and mobility for people and freight
5. Protect and enhance the environment, promote energy conservation and improve the quality of life
6. Enhance integration and connectivity of the transportation system across and between modes
7. Promote efficient system management and operation
8. Emphasize preservation of the existing system
9. Improve resiliency and reliability of the transportation system and reduce or mitigate storm water impacts of surface transportation
10. Enhance travel and tourism.

Mr. Waple reviewed the public and stakeholder outreach undertaken thus far during the plan development process:

Public & Stakeholder Outreach: 14,774 points of engagement!

- Expert Resource Panels
- Surveys & Comments
- Smart Moves Webpage and Videos
- Public Meetings:
 - Regional Plan Workshop
 - PPP & Public Input Meetings
- SPC Committees
- Emails & Media
 - Email Contacts
 - Social Media
 - TV/Radio
 - Newspaper

Mr. Waple reviewed the results of the Strategy Prioritization Survey to date. The survey is aimed at gathering input as to your priorities for the refined strategies. We have received over 600 responses as of Wednesday, January 23rd. Mr. Waple discussed the slides of responses from the Commissioners and the public for each Goal area and each of their associated 8 Strategies, which depicted a tight variation between the average rankings of each strategy

- Open to Commissioners - 12/7/2018
- Open to expert panels and SPC committees – 12/17/2018
- Open to the public 1/2/2019

Mr. Waple discussed the ongoing Project Development Workgroups used to gather candidate projects from our planning partners (Member Counties, City of Pittsburgh, Transit Providers, TMAs and PennDOT) and review public comments received related to infrastructure needs. Next he discussed the project screening that will examine how well do projects and investment categories advance the vision, goals, strategies and performance metrics. Once the projects and programs are refined by the workgroups, staff will examine the projects to ensure sure they support and advance the Vision, Goals and Strategies.

Mr. Waple outlined the next steps in the Long Range Plan Process:

- Finalize Vision, Goals and Strategies for LRP
- Continue LRP Project Development Workgroups
- Screen projects based on strategies and metrics
- Air Quality Conformity and Environmental Justice Analysis
- Formal public comment period for the draft plan with public meetings
- Commission Adoption: June 2019
- Begin Plan Implementation: July 2019

Mr. Clifford Levine asked what does the rankings from the Commissioners and from the public mean? What does it mean to get a higher or lower ranking, and how is that implemented? Mr. Waple responded through the survey, we hope to get a sense from you, the Commissioners, and from the public if there are strategies that may be more important to the region and should be acted on more expeditiously. Mr. Levine asked how the strategies reflect the Vision. Mr. Villotti added the vision is here, pointing to the slide with Connected Mobility, Resilient Communities and Globally Competitive Economy. This is what all the groups told us they were looking for. At the Regional Policy Meeting today, we talked about Federal Opportunity Zones as a way of implementing the Plan in terms of programs; is that program consistent in something that we should pursue? If you look at the online Scenario Reports, they describe, in more detail, of what the Expert Resource Panels were considering and thinking about when they established these strategies.

8. Commission Action on Resolution 1-19 to Endorse the Vision, Goals, and Strategies for Smart Moves for a Changing Region, the Region's Long-Range Transportation and Development Plan;

WHEREAS, The region's Planning Directors and the Task Force laid out a planning process that allowed the region to identify the major Forces of Change that are currently impacting the region, and forces that have the potential to impact the region in the future. It focused on talking to and hearing from the region's experts on demographics, the economy, the environment, technology and funding;

WHEREAS, through the Expert Resource Panel meetings we identified areas within each of the major Forces of Change that were important to understand for their potential impact on the region. Through their continued input and through on-line surveys, those forces were refined, and draft strategies to address them were developed;

WHEREAS, in refining those strategies, the Regional Policy Advisory Committee recommended to capture the main themes in a positive vision statement which led to the *Smart Moves* Vision, Goals and Strategies;

WHEREAS, through the Commission's continued interest, feedback and suggestions, the Vision, Goals and Strategies continued to be further refined and improved to what is before the Commission today for endorsement;

WHEREAS, *Smart Moves for a Changing Region* is built upon the three fundamental goals of Connected Mobility for all, Resilient Communities, and a Globally Competitive Economy. These goals represent a shared, positive, holistic vision for the future of Southwestern Pennsylvania;

WHEREAS, through these goals, the Plan presents strategies that strive to connect the region and its residents to opportunity; and,

WHEREAS, SPC's Transportation Technical Committee and the Regional Planning Directors Committee recommend Commission endorsement of the Vision, Goals and Strategies.

NOW, THEREFORE, BE IT RESOLVED that the Southwestern Pennsylvania Commission endorses Vision, Goals, and Strategies for *Smart Moves for a Changing Region*, the region's Long-Range Transportation and Development Plan.

Commissioner Steve Craig moved to approve Resolution 1-19 and Commissioner Kevin Boozel seconded. The affirmative vote was unanimous.

9. Committee Reports

Planning Directors' Forum

Regional Policy Advisory Committee

Mr. Villotti spoke on the Planning Directors' Forum held in the SPC Conference Center on January 14th. We discussed three things. The first thing discussed is what you have reviewed here today, and the Directors' made the recommendation to approve. The second is we had Scott Dietrich from DCED via conference call discuss with the Planning Directors the Federal Opportunity Zones. What that means and where we could have that impact our region on those opportunity zones. And finally, the Director's discussed looking at doing the sewer and water authority inventory done by Washington County. They discussed maybe having the Water Resource Center pulling some of that inventory together as a way to understand project.

Mr. Fitzgerald reported on the Southwest Partnership for Mobility. The Governor and Secretary Richards knowing that Act 44 and Act 89 are nearing the end asked the southwest and southeast to put together an advisory partnership with consultants being led by Michael Baker and KCI Technologies to figure out a way with the Turnpike Commission, PennDOT, the SPC Counties and some counties beyond SPC region, along with the Allegheny Conference, economic development groups, industry representing the City mobility to create a strategy moving forward.

10. Other Business/Announcements – Jim Hassinger

Mr. Hassinger reminded the Commission of the Legislative Reception for both state and federal representatives on February 7th at 3:00 p.m., in the SPC Conference Center, Suite 400. Because we have new faces, it was recommended that we update them about what SPC does, the status of the Plan, and give them an opportunity to tell us what their priorities are.

11. New Business – None.

12. Adjourn

Commissioner Craig moved to adjourn the meeting of the Southwestern Pennsylvania Commission and Lynn Heckman seconded. The affirmative vote was unanimous.

Respectfully Submitted

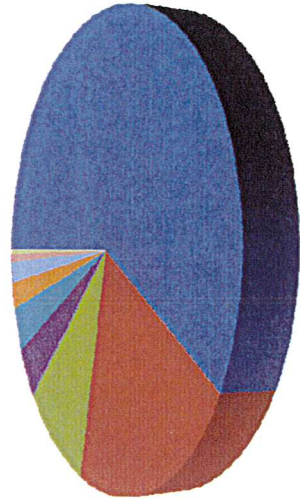
Tony Amadio
Secretary-Treasurer

SOUTHWESTERN PENNSYLVANIA CORPORATION
SOUTHWESTERN PENNSYLVANIA COMMISSION
 COMBINED REVENUE and EXPENSE STATEMENT
 FOR THE PERIOD JULY 1, 2018 TO FEBRUARY 28, 2019

	UPDATED ADOPTED BUDGET	ACTUAL TO DATE	PERCENT OF BUDGET	ACTUAL and ENCUMBERED TO DATE	PERCENT OF BUDGET
REVENUES:					
Federal Grants	\$ 8,196,400	\$ 4,299,292	52.45%	\$ 5,824,772	71.07%
State Grants	2,456,146	1,100,032	44.79%	2,042,281	83.15%
In-Kind Service Match	1,071,185	697,954	65.16%	945,780	88.29%
Commission Members Local Match	519,437	313,362	60.33%	398,747	76.77%
Communications Allocation	345,700	239,249	69.21%	345,700	100.00%
SPC Member Water Program	239,564	160,206	66.87%	160,206	66.87%
Other Funding / Program Match	263,035	204,251	77.65%	204,251	77.65%
SPC Corporation Operating Funds	81,780	50,351	61.57%	69,665	85.19%
Loan Program Fees Recognized	38,523	24,761	64.28%	24,761	64.28%
TOTAL PROJECT RELATED REVENUES	\$ 13,211,770	\$ 7,089,458	53.66%	\$ 10,016,163	75.81%
EXPENDITURES:					
Direct					
Program Salaries with Fringes	\$ 4,194,270	\$ 2,725,580	64.98%	\$ 2,725,580	64.98%
Printing	20,525	5,204	25.35%	15,204	74.08%
Telephone	9,972	4,832	48.46%	4,832	48.46%
Postage	4,225	647	15.31%	647	15.31%
Supplies; Software Maintenance	107,120	57,254	53.45%	57,254	53.45%
Travel	143,798	53,910	37.49%	53,910	37.49%
Equipment Purchase/Lease/Maintenance	48,323	4,020	8.32%	46,020	95.23%
Meetings	129,252	65,724	50.85%	65,724	50.85%
Legal and Grant Audits	57,542	50,146	87.15%	50,146	87.15%
Dues/Data Files/Web Site Development and Maintenance	132,717	73,180	55.14%	73,180	55.14%
Training and Development	36,536	7,116	19.48%	7,116	19.48%
Temp Personnel Services	59,275	19,558	33.00%	19,558	33.00%
Communications Project Allocation	345,700	239,249	69.21%	345,700	100.00%
In-Kind Service Match	1,071,185	697,954	65.16%	945,780	88.29%
Contractual - Professional Technical Consulting Services	691,389	273,503	39.56%	273,503	39.56%
Contractual - Whitman, Requardt & Associates	1,053,361	166,812	15.84%	1,053,361	100.00%
Contractual - MarketSpace Communications	507,000	332,942	65.67%	507,000	100.00%
Contractual - On Call Consultancy	500,000	223,424	44.68%	500,000	100.00%
Contractual - PREP Partners	484,264	211,445	43.66%	484,264	100.00%
Contractual - LDD's (Keystone Communities Phase I & II)	356,886	118,152	33.11%	356,886	100.00%
Contractual - LDD's (ENGAGE! Program)	297,399	40,743	13.70%	297,399	100.00%
Contractual - SPC Members UPWP Planning Assistance	216,669	70,509	32.54%	216,669	100.00%
Contractual - Catalyst Connection subaward	201,722	113,492	56.26%	201,722	100.00%
Contractual - Enterprise Holdings	200,000	81,200	40.60%	200,000	100.00%
Contractual - Port Authority Allegheny County Transit Planning Pass-Through	184,000	141,468	76.88%	184,000	100.00%
Contractual - Advocacy Representation	60,000	40,686	67.81%	60,000	100.00%
Total Direct Expenditures	\$ 11,113,130	\$ 5,818,750	52.36%	\$ 8,745,455	78.69%
Indirect Expenses	2,098,640	1,270,708	60.55%	1,270,708	60.55%
TOTAL PROJECT RELATED EXPENDITURES	\$ 13,211,770	\$ 7,089,458	53.66%	\$ 10,016,163	75.81%

Revenues - Actual and Encumbered to Date

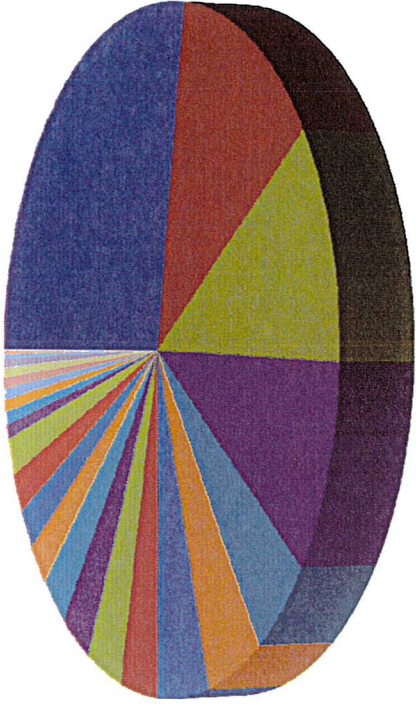
Federal Grants \$5,824,772	\$ 5,824,772
State Grants \$2,042,281	2,042,281
In-Kind Service Match \$945,780	945,780
Commission Members Local Match \$398,747	398,747
Communications Allocation \$345,700	345,700
Other Funding/Program Match \$204,251	204,251
SPC Member Water Program \$160,206	160,206
SPC Corporation Operating Funds \$69,665	69,665
Loan Program Fees \$24,761	24,761
	<u>\$ 10,016,163</u>



- Federal Grants \$5,824,772
- State Grants \$2,042,281
- In-Kind Service Match \$945,780
- Commission Members Local Match \$398,747
- Communications Allocation \$345,700
- Other Funding/Program Match \$204,251
- SPC Member Water Program \$160,206
- SPC Corporation Operating Funds \$69,665
- Loan Program Fees \$24,761

Expenditures - Actual and Encumbered to Date

Program Salaries with Fringes \$2,725,580	\$ 2,725,580
Indirect Expenses \$1,270,708	1,270,708
Contractual - Whitman, Requaert & Associates \$1,053,361	1,053,361
In-Kind Service Match \$945,780	945,780
Contractual - MarketSpace Communications \$507,000	507,000
Contractual - On Call Consultancy \$500,000	500,000
Contractual - PREP Partners \$484,264	484,264
Contractual - LDD's (Keystone Communities Phase I & II) \$356,886	356,886
Communications Project Allocation \$345,700	345,700
Contractual - LDD's (ENGAGE! Program) \$297,399	297,399
Contractual - Professional Technical Consulting Services \$273,503	273,503
Contractual - SPC Members UPWP Planning Assistance \$216,669	216,669
Contractual - Catalyst Connection subaward \$201,722	201,722
Contractual - Enterprise Holdings \$200,000	200,000
Contractual - Port Authority Allegheny County Transit Planning Pass-Through \$184,000	184,000
Dues/Data Files/Web Site Development and Maintenance \$73,180	73,180
Meetings \$65,724	65,724
Contractual - Advocacy Representation \$60,000	60,000
Supplies; Software Maintenance \$57,254	57,254
Travel \$53,910	53,910
Legal and Grant Audits \$50,146	50,146
Equipment Purchase/Lease/Maintenance \$46,020	46,020
Temp Personnel Services \$19,558	19,558
Printing \$15,204	15,204
Training and Development \$7,116	7,116
Telephone \$4,832	4,832
Postage \$647	647
	<u>\$ 10,016,163</u>



- Program Salaries with Fringes \$2,725,580
- Indirect Expenses \$1,270,708
- Contractual - Whitman, Requaert & Associates \$1,053,361
- In-Kind Service Match \$945,780
- Contractual - MarketSpace Communications \$507,000
- Contractual - On Call Consultancy \$500,000
- Contractual - PREP Partners \$484,264
- Contractual - LDD's (Keystone Communities Phase I & II) \$356,886
- Communications Project Allocation \$345,700
- Contractual - LDD's (ENGAGE! Program) \$297,399
- Contractual - Professional Technical Consulting Services \$273,503
- Contractual - SPC Members UPWP Planning Assistance \$216,669
- Contractual - Catalyst Connection subaward \$201,722
- Contractual - Enterprise Holdings \$200,000
- Contractual - Port Authority Allegheny County Transit Planning Pass-Through \$184,000
- Dues/Data Files/Web Site Development and Maintenance \$73,180
- Meetings \$65,724
- Contractual - Advocacy Representation \$60,000
- Supplies; Software Maintenance \$57,254
- Travel \$53,910
- Legal and Grant Audits \$50,146
- Equipment Purchase/Lease/Maintenance \$46,020
- Temp Personnel Services \$19,558
- Printing \$15,204
- Training and Development \$7,116
- Telephone \$4,832
- Postage \$647

SOUTHWESTERN PENNSYLVANIA COMMISSION

RESOLUTION NO. 2-19

A RESOLUTION OF THE SOUTHWESTERN PENNSYLVANIA COMMISSION ("SPC") to adopt the 2019 Regional Active Transportation Plan for Southwestern Pennsylvania.

WHEREAS, SPC was established as a regional planning commission with the Counties of Allegheny, Armstrong, Beaver, Butler, Fayette, Greene, Indiana, Lawrence, Washington, and Westmoreland and the City of Pittsburgh as Participating Political Subdivisions pursuant to the regional Planning Law, May 29, 1956, P.L. 1845, as amended;

WHEREAS, SPC was established pursuant to Section 3 of the Intergovernmental Cooperation Act, Number 180, July 12, 1972, as the designated Metropolitan Planning Organization (MPO) for the Pittsburgh Metropolitan Planning Area;

WHEREAS, pursuant to federal requirements, SPC conducts active transportation planning studies as part of the metropolitan transportation planning process, the results of which are considered for incorporation into the Long Range Transportation Plan (LRTP) and the Transportation Improvement Program (TIP);

WHEREAS, in 2018, SPC conducted planning to produce a Regional Active Transportation Plan for Southwestern Pennsylvania – pursuant to the 2017-18 Unified Planning Work Program (UPWP) for SPC;

WHEREAS, the 2019 Regional Active Transportation Plan for Southwestern Pennsylvania serves as a policy guide for future planning and implementation of bicycle and pedestrian facilities in the Southwestern Pennsylvania region;

WHEREAS, the 2019 Regional Active Transportation Plan for Southwestern Pennsylvania has been developed with ongoing involvement and assistance from the SPC Active Transportation Forum (ATF) comprised of representatives from local governments, bicycle and pedestrian interest groups, federal and state agencies, and the general public;

WHEREAS, the 2019 Regional Active Transportation Plan for Southwestern Pennsylvania consists of the goals and objectives supporting the regional goal of developing bicycle and pedestrian transportation systems as part of an integrated transportation system as well as descriptions of policies and programs recommended to be implemented throughout the Southwestern Pennsylvania Region; and,

WHEREAS, the 2019 Regional Active Transportation Plan for Southwestern Pennsylvania has been evaluated by appropriate technical and review processes consistent with adopted procedures.

NOW, THEREFORE, BE IT RESOLVED that SPC adopts the 2019 Regional Active Transportation Plan for Southwestern Pennsylvania as the policy guide for bicycle and pedestrian planning in the Southwestern Pennsylvania Region.

IN TESTIMONY WHEREOF I hereto subscribe my name as Secretary-Treasurer.

I, Tony Amadio, HEREBY CERTIFY that I am Secretary-Treasurer of the SOUTHWESTERN PENNSYLVANIA COMMISSION: that the foregoing resolution was adopted, in accordance with the By-Laws, by the Members of said Commission at a meeting duly called and held on the 29th day of April 2019 a quorum being present and that said resolution is now in full force and effect.

IN TESTIMONY WHEREOF I hereto subscribe my name as Secretary-Treasurer.

Secretary-Treasurer

SOUTHWESTERN PENNSYLVANIA COMMISSION

RESOLUTION NO. 3-19

A RESOLUTION OF THE SOUTHWESTERN PENNSYLVANIA COMMISSION to proclaim May 2019 as "National Bike Month" in Southwestern Pennsylvania.

WHEREAS, the bicycle is an economical, healthy and environmentally sound form of active transportation for many work, school, utilitarian, recreational and social trips in southwestern Pennsylvania;

WHEREAS, there is an increasing interest in healthy, sustainable and economic transportation options;

WHEREAS, improving conditions for bicycling has been shown to improve safety and encourage healthy lifestyles, to have a positive impact on the region's economy and tourism industry, to support local businesses and to reduce air pollution and traffic congestion;

WHEREAS, the League of American Bicyclists has declared May as National Bike Month for the past 62 years, celebrates the third Friday in May as Bike to Work Day and the week of Bike to Work Day as Bike Week, and has done so again in 2019; and

WHEREAS, the Southwestern Pennsylvania Commission and other groups across this region are hosting bike-related events, teaching bike education classes and finding unique ways to celebrate their diverse bike cultures and community pride during the month of May 2019.

NOW, THEREFORE, BE IT RESOLVED that the Southwestern Pennsylvania Commission encourages the citizens of this region to participate in National Bike Month, Bike Week and Bike-to-Work Day events and offers support for this annual celebration of bicycling by declaring May 2019 as "National Bike Month" in southwestern Pennsylvania.

I, Tony Amadio, HEREBY CERTIFY that I am Secretary-Treasurer of the SOUTHWESTERN PENNSYLVANIA COMMISSION, that the foregoing resolution was adopted, in accordance with the By-Laws, by the Commission at a Meeting duly called and held on the 29th day of April 2019, a quorum being present; and that said resolution is now in full force and effect.

IN TESTIMONY WHEREOF I hereto subscribe my name as Secretary-Treasurer

Secretary-Treasurer

WHEREAS, the 2019 Regional Active Transportation Plan for Southwestern Pennsylvania has been evaluated by appropriate technical and review processes consistent with adopted procedures.

NOW, THEREFORE, BE IT RESOLVED that SPC adopts the 2019 Regional Active Transportation Plan for Southwestern Pennsylvania as the policy guide for bicycle and pedestrian planning in the Southwestern Pennsylvania Region.

IN TESTIMONY WHEREOF I hereto subscribe my name as Secretary-Treasurer.

I, Tony Amadio, HEREBY CERTIFY that I am Secretary-Treasurer of the SOUTHWESTERN PENNSYLVANIA COMMISSION: that the foregoing resolution was adopted, in accordance with the By-Laws, by the Members of said Commission at a meeting duly called and held on the 29th day of April 2019 a quorum being present and that said resolution is now in full force and effect.

IN TESTIMONY WHEREOF I hereto subscribe my name as Secretary-Treasurer.

Secretary-Treasurer

SOUTHWESTERN PENNSYLVANIA COMMISSION

RESOLUTION NO. 4-19

A RESOLUTION OF THE SOUTHWESTERN PENNSYLVANIA COMMISSION to proclaim May 2019 as "CommuteInfo Commute Options Awareness Month" in Southwestern Pennsylvania.

WHEREAS, over 75 percent of the 1.2 million workers in the SPC region travel alone to work;

WHEREAS, the region will have less traffic congestion and improved air quality if more commuters shared a ride to work;

WHEREAS, sharing a ride to work will save commuters money;

WHEREAS, operating a customer-focused full service commuting options resource center, running the region's vanpool and carpool programs, and facilitating the forum for coordinating regional ridesharing efforts—SPC's CommuteInfo Program is the regional one-stop shop for ridesharing services;

WHEREAS, 495 commuters already ride to work daily in CommuteInfo's 49 registered vanpools and 737 commuters ride to work daily in the 343 carpools registered with CommuteInfo;

WHEREAS, to ensure that all employers and commuters in the region are aware of all available commuting options CommuteInfo, in addition to sponsoring volunteer vanpools and arranging carpools, provides information about transit, promotes biking and walking, provides commuter safety information, and provides information about the region's park-n-ride facilities through the Program website www.commuteinfo.org or by calling toll-free 1-888-819-6110;

WHEREAS, several events are scheduled in May that independently promote alternatives to driving alone including National Transportation Week (as declared by Presidential proclamation), National Bike Month, Bike Week, and Bike to Work Day (sponsored by the League of American Bicyclists), National Employee Health and Fitness Day (sponsored by the National Association for Health and Fitness), and National Clean Air Week (sponsored by the U.S. Environmental Protection Agency and the National Oceanic and Atmospheric Administration's National Weather Service); and

WHEREAS, CommuteInfo is planning a series of events in May to emphasize the value of ridesharing to the region, and to promote increased awareness of CommuteInfo and its services when national attention is being focused on alternatives to driving alone.

NOW, THEREFORE, BE IT RESOLVED that the Southwestern Pennsylvania Commission encourages the citizens of the region to welcome and emphasize the value of ridesharing by choosing ridesharing at least twice a week, and offers its support by proclaiming May 2019 as "CommuteInfo Commute Options Awareness Month" in Southwestern Pennsylvania.

I, Tony Amadio, HEREBY CERTIFY that I am Secretary-Treasurer of the SOUTHWESTERN PENNSYLVANIA COMMISSION that the foregoing resolution was adopted, in accordance with the By-Laws, by the Commission at a Meeting duly called and held on the 29th day of April 2019, a quorum being present; and that said resolution is now in full force and effect.

IN TESTIMONY WHEREOF I hereto subscribe my name as Secretary-Treasurer.

Secretary-Treasurer

SOUTHWESTERN PENNSYLVANIA COMMISSION

NOTICE OF PUBLIC COMMENT PERIOD AND PUBLIC MEETINGS

The Southwestern Pennsylvania Commission (SPC) is seeking input from the public on the following important draft documents that will advance investments in the region's transportation plan:

- Draft *Smart Moves for a Changing Region* transportation and development plan which identifies the region's priority roadway, transit and multimodal transportation improvements programmed for advancement over the next 25-30 years
- Environmental Justice Benefits and Burdens Assessment of *Smart Moves for a Changing Region*
- Air Quality Conformity Determination for *Smart Moves for a Changing Region*

Beginning Monday, May 6, 2019, these draft documents will be available for public review on the internet at www.spcregion.org, and at the Southwestern Pennsylvania Commission, at the Pittsburgh Department of City Planning, at County Planning Departments, and at many public libraries in Southwestern Pennsylvania.

SPC's Public Participation Panels encourage you to attend a public meeting to learn more about the draft documents. Meetings will be open house in format. There will be opportunities to look at maps, talk to representatives from SPC, PennDOT, transit operators, and planning departments, ask questions, and submit your comments.

Please note the location of your county meeting. The open houses will be held from 4:30 p.m. to 6:30 p.m. (unless otherwise noted). The public is invited to attend a meeting at any point during the two hours.

- **May 6, Beaver County** Courthouse, Commissioner's Meeting Room, 810 Third Street, Beaver
- **May 9, Fayette County** Chamber of Commerce, 65 West Main Street, Uniontown
- **May 13, Westmoreland County** Courthouse, Commissioner's Meeting Room, 2 North Main Street, Greensburg
- **May 22, Allegheny County and the City of Pittsburgh**, SPC Conference Center, Two Chatham Center, 112 Washington Place, 4th floor, Pittsburgh
- **May 23, Butler County** Government Center, 1st Floor, Public Meeting Room, 124 West Diamond Street, Butler
- **May 29, Lawrence County Courthouse**, Commissioner's Meeting Room, 430 Court Street, New Castle
The Lawrence County public meeting will be held from 9:00 a.m. to 11:00 a.m.
- **May 30, Washington County**, Courthouse Square Building, Room 103, 100 West Beau Street, Washington
- **June 3, Armstrong County** Commissioner's Conference Room, 450 Market Street, Kittanning
- **June 4, Indiana County**, Indiana CareerLink, 300 Indian Springs Road, Indiana
- **June 5, Greene County**, Greene County Office Building, 93 East High Street, Waynesburg

Comments on the draft documents will be accepted by SPC representatives at any meeting. Written comments may also be submitted to comments@spcregion.org, by mail to SPC Comments at Two Chatham Center, Suite 500, 112 Washington Place, Pittsburgh, PA 15219 or by fax to (412) 391-9160.

All comments must be received by 4:00 p.m. on Friday, June 7, 2019.

Upon consideration of public comments received, the Southwestern Pennsylvania Commission will consider approval of the draft documents at their meeting at 4:30 p.m., on Monday, June 24, 2019. This meeting will be held at Two Chatham Center, 112 Washington Place, 4th Floor, Pittsburgh, PA 15219.

The Southwestern Pennsylvania Commission (SPC) is committed to compliance with nondiscrimination requirements of civil rights statutes, executive orders, regulations and policies applicable to the programs and activities it administers. Accordingly, SPC is committed to ensuring that program beneficiaries receive public participation opportunities without regard to race, color, national origin, sex, age, disability or economic status. Meeting facilities are accessible to persons with disabilities and the location is reachable by public transit. SPC will provide auxiliary services for individuals with language, speech, sight or hearing needs, provided the request for assistance is made 3 days prior to the meeting. SPC will attempt to satisfy requests made with less than 3 days notice as resources allow. Please make your request for auxiliary services to Abby Stark at (412) 391-5590, Ext. 343, or astark@spcregion.org. If you believe you have been denied participation opportunities, or otherwise discriminated against in relation to the programs or activities administered by SPC, you may file a complaint using the procedures provided in our complaint process document or by contacting SPC's Title VI Coordinator by calling (412) 391-5590. For more information, or to obtain a Title VI Discrimination Complaint Form, please see our website at: www.spcregion.org or call 412-391-5590.

TRANSIT SERVICE INFORMATION

For information regarding transit services in Allegheny County, please call Port Authority Customer Service at 412-442-2000. For transit information in other counties, please visit: www.commuteinfo.org/comm_trans.shtml or call 1-888-819-6110.

This notice satisfies the program of projects requirements of the Urbanized Area Formula Program of the Federal Transit Administration for Beaver County Transit Authority, Butler Transit Authority, Fayette Area Coordinated Transit, Mid Mon Valley Transit Authority, Port Authority of Allegheny County, Washington County Transportation Authority, Westmoreland County Transit Authority, Southwestern Pennsylvania Commission, and CommuteInfo, a program of the Southwestern Pennsylvania Commission.

Partnership Fact Sheet

The once-a-decade population count affects your representation in government, determines how much funding your community receives, and provides data to help you plan for the future. Join us to spread the word about the importance of the 2020 Census and help ensure a complete and accurate count.

BENEFITS OF A COMPLETE COUNT

A complete count of every person living in the United States has tremendous benefits for you and for your stakeholders.

Census data:

- Accurately determine how many representatives each state has in Congress and inform the redrawing of congressional district boundaries.
- Are used as the basis for distributing more than \$675 billion in federal funds annually to states, counties, and communities to support resources such as schools, hospitals, and fire departments.
- Inform business decisions, policy, community initiatives, and consumer advocacy.

WHAT IT MEANS TO BE A 2020 CENSUS PARTNER

You can make a difference—no matter how much time you're able to commit. As trusted voices in the communities they serve, partners are critical to the success of the 2020 Census. These are some of the many ways you can get involved:

- Use U.S. Census Bureau tools, information, and messaging in creative ways to increase public participation; for example, share newsletter articles and co-branded products and post on social media.

- Host a workshop to devise possible solutions to 2020 Census challenges in your community and generate commitments to tackle them.
- Provide information to stakeholders about the importance and benefits of participating in the 2020 Census; for example, invite Census Bureau officials to speak to your audience.
- Encourage people in your community to work for the Census Bureau, and share this link with them: 2020census.gov/jobs.

WHY BECOME A 2020 CENSUS PARTNER?

As a 2020 Census partner, you will:

- Become part of a powerful network of government, nonprofit, corporate, and community organizations with a diverse group of industry professionals.
- Help ensure that your community is accurately represented.
- Have personalized access to Census Bureau data tools and products, workshops to help you use data effectively, and one-on-one support from data trainers.

Not only will you help ensure that the people you work with are accurately represented, but you will also be able to use Census Bureau resources to improve your community.

County Complete Count Committee

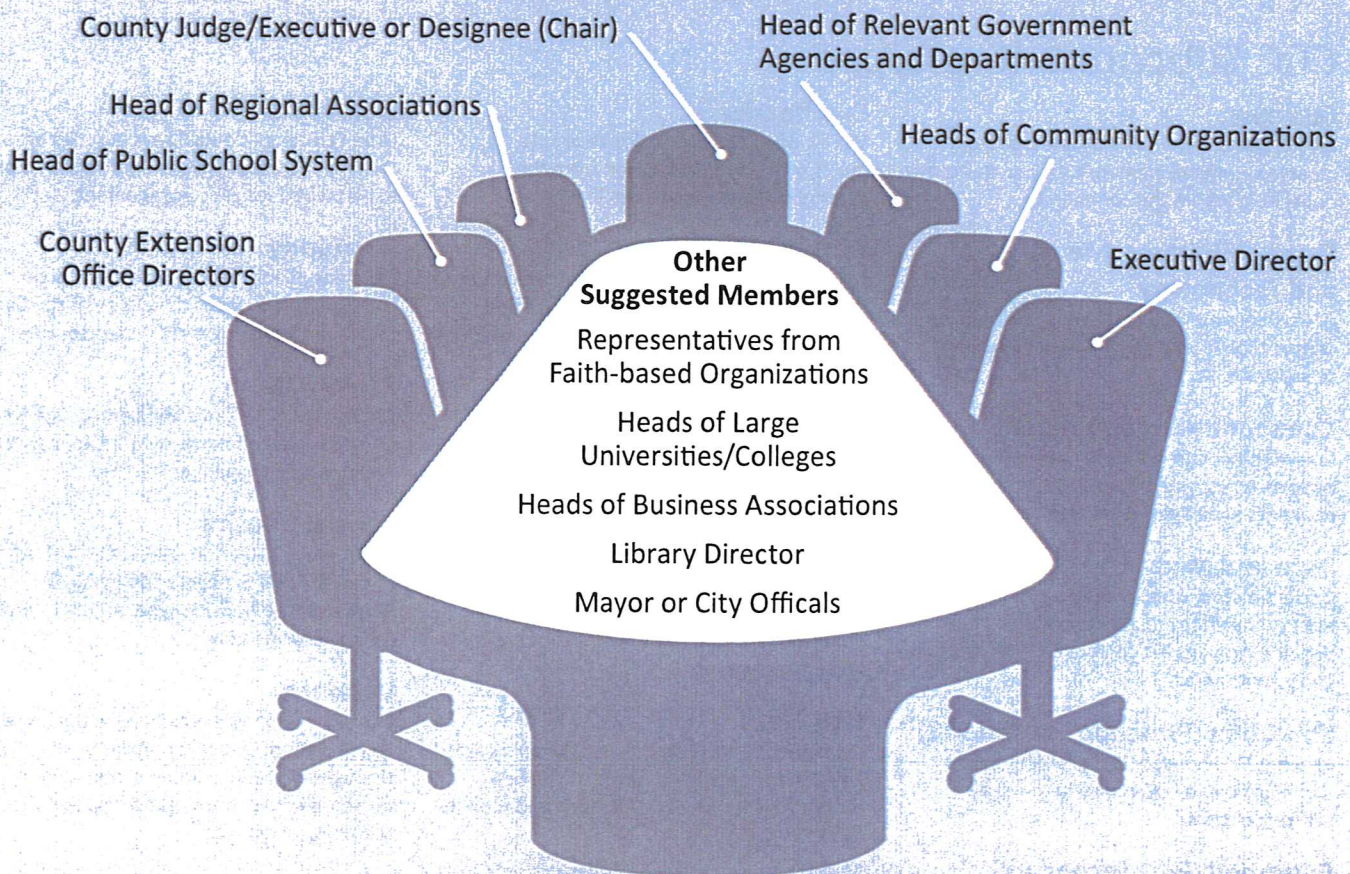
A Complete Count Committee is a mutually beneficial partnership – at the highest level—within each county. The County Judge/Executive often appoints members of the Complete Count Committee (CCC). Committees consist of influential community leaders who are charged with developing a census awareness campaign that:

- Communicates the importance of the census through local messaging.
- Raises awareness of the census throughout the county.
- Motivates every household in the county to participate in the census by completing the questionnaire thoroughly and in a timely manner.
- Increases the county's self-response rate.

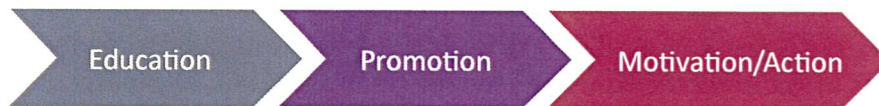
The size of the Complete Count Committee is determined by each county. In addition, County Judge/Executive and county officials may allocate funding to support the activities of the CCC. Counties view this funding as a sound investment in the future. Failure to count residents could result in a substantial loss of revenue for the next decade.

Suggested County CCC Membership

Partnership Specialist is advisor and Census Liaison



Key Communications Phases



Education Phase (2018— 2019)

The education phase is often referred to as the “Raising Census Awareness” phase. The message to each community member is that the census is a civic activity that affects people of all ages, races, cultures, and ethnicities. This is the period to strongly emphasize the many uses of census data and highlight specific local examples of how census data benefits a community.

Promotion Phase (April 2019—January 2020)

The promotion phase of the 2020 Census officially starts on April 1, 2019, a year out from Census Day. This phase overlaps with the education phase. The theme of this phase is “The 2020 Census is Coming.” During this period, CCCs implement activities through their government, faith- and community-based organization, business, media, and recruitment partners. An effective strategy guarantees that community residents will encounter census messages during times of work, play, leisure, school, and worship.

Motivation/Action Phase (February 2020—June 2020)

The motivation/action phase starts in February 2020, intensifies in March 2020, and reaches its peak on Census Day—April 1st, 2020. The theme of this phase is “Be Counted for Your Community” and the focus is to motivate each household to take ownership of the census and make a conscious decision to participate. The non-response follow-up operation will be the focus toward the end of this phase, and the message to the community will change, encouraging households to “Cooperate with Census Takers”.

CCC Subcommittee types

Business

Involving a community’s business sector creates a unifying element that touches every household within the community.

Communications, Media and Technology

Assists community organizations in utilizing census toolkit materials and enables them to innovate.

Community Organizations

Community organizations provide outreach opportunities for a broad spectrum of residents of all ages, races and backgrounds.

Data and Maps

Understanding where hard-to survey areas exist is important to direct subcommittee activities toward the correct populations and geographic areas.

Education (Preschool – Grade 12)

Reaches U.S. households through schools and helps create a generation of future self-responders.

Education (Post Secondary)

Works with university housing to obtain administrative records for group quarters; educates off-campus students to participate accurately.

Ex-offender

The ex-offender population is sizable and is often disenfranchised from the community and hard to track.

Faith-based

Faith-based organizations are found in every community and maintain interactive and ongoing communications with their members.

Government

Leveraging the ability of local government to provide knowledge of the population, organizations, and institutions is essential to an accurate count.

Group Quarters

Because of the limited access to most group quarters, cooperation from the institutions is vitally important to achieve an accurate count.

Homeless

In the 2010 Decennial Census, the count was 209,325 for persons counted at shelters, outdoor locations, soup kitchens and mobile food vans.

Immigrant

One of the serious challenges for a Census enumerator is encountering housing units where no one in the household speaks English.

Library

Urban Libraries Council says libraries are the “most trusted government entity”, poised to be pivotal for civic engagement.

Recruiting

Reaching all members of the workforce community enhances the ability of the Census to plug into existing recruiting resources.

Senior Citizen

Although a high responding group, the trend towards reduced home ownership may create enumerating challenges for field.

Special Housing

The rental population will exceed a third of the entire U.S. population by 2020. No matter the housing type, access is vital for an accurate count.

Veterans

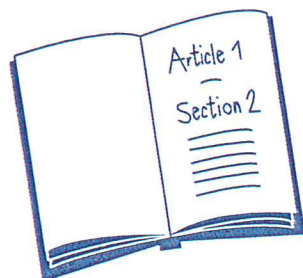
Over 22 million veterans living in the United States present a sizable population distributed throughout the 50 states. Former military personnel can provide leadership and excellent recruiting assistance.

CENSUS 101: WHAT YOU NEED TO KNOW

The 2020 Census is closer than you think!
Here's a quick refresher of what it is and why it's essential that everyone is counted.

Everyone counts.

The census counts every person living in the U.S. once, only once, and in the right place.

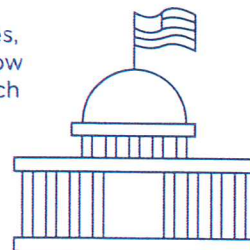


It's in the constitution.

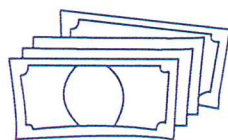
The U.S. Constitution mandates that everyone in the country be counted every 10 years. The first census was in 1790.

It's about fair representation.

Every 10 years, the results of the census are used to reapportion the House of Representatives, determining how many seats each state gets.

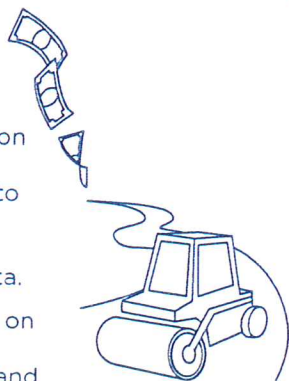


It's about \$675 billion.



The distribution of more than \$675 billion in federal funds, grants and support to states, counties and communities are based on census data.

That money is spent on schools, hospitals, roads, public works and other vital programs.

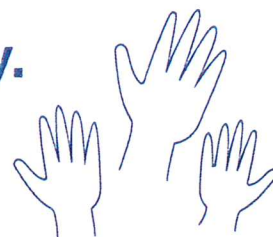


It's about redistricting.

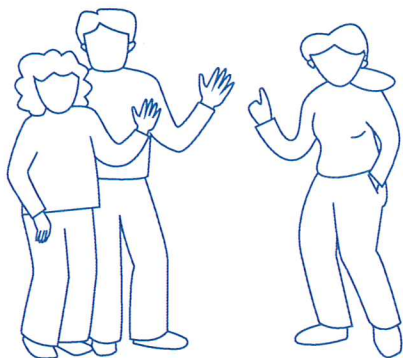
After each decade's census, state officials redraw the boundaries of the congressional and state legislative districts in their states to account for population shifts.

Taking part is your civic duty.

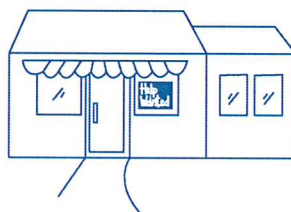
Completing the census is mandatory: it's a way to participate in our democracy and say "I COUNT!"



Census data are being used all around you.

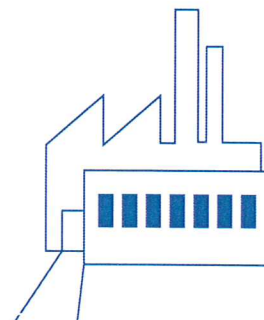
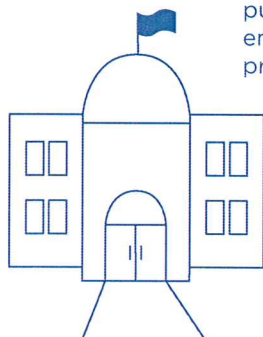


Residents use the census to support community initiatives involving legislation, quality-of-life and consumer advocacy.

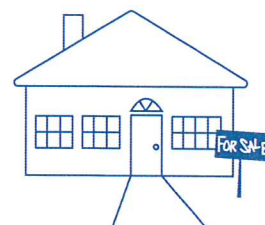


Businesses use census data to decide where to build factories, offices and stores, which create jobs.

Local governments use the census for public safety and emergency preparedness.



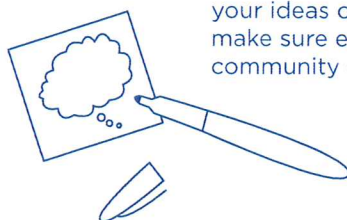
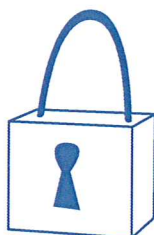
Real estate developers use the census to build new homes and revitalize old neighborhoods.



Your privacy is protected.

It's against the law for the Census Bureau to publicly release your responses in any way that could identify you or your household.

By law, your responses cannot be used against you and can only be used to produce statistics.

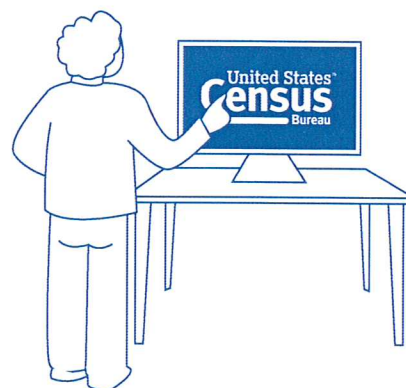


You can help.

You are the expert—we need your ideas on the best way to make sure everyone in your community gets counted.

2020 will be easier than ever.

In 2020, you will be able to respond to the census online.



United States™
Census
Bureau

FIND OUT HOW TO HELP
AT [CENSUS.GOV/PARTNERS](https://census.gov/partners)

United States™
Census
2020



Southwestern Pennsylvania Commission

Welcome

Microphone Instructions:

- Push button to talk
- Mic is ON when **RED** light is lit
- Push button again when finished

Please speak directly into the mic
Thank You!

Note: System allows 4 mics to be in use at one time

Southwestern Pennsylvania Commission April 29, 2019
Agenda Item No. 1

Call to Order

- Quorum
- Conflict of Interest Declarations

Southwestern Pennsylvania Commission April 29, 2019
Agenda Item No. 2

Action

Meeting Minutes
January 28, 2019

Southwestern Pennsylvania Commission April 29, 2019
Agenda Item No. 3

Public Comment

Southwestern Pennsylvania Commission April 29, 2019
Agenda Item No. 4

Financial Report

Southwestern Pennsylvania Commission

April 29, 2019

Agenda Item No. 4

For the period July 1, 2018 to February 28, 2019

<u>Revenues</u>	Updated Budget	Actual and Encumbered to Date	Percent of Budget
Total Project Related Revenues	\$13,211,770	\$10,016,163	75.81%
Total Revenues	\$13,211,770	\$10,016,163	75.81%

<u>Expenditures</u>	Updated Budget	Actual and Encumbered to Date	Percent of Budget
Total Project Expenditures	\$13,211,770	\$10,016,163	75.81%
Total Expenditures	\$13,211,770	\$10,016,163	75.81%

Southwestern Pennsylvania Commission April 29, 2019
Agenda Item No. 5

Staff Profile

Leann Chaney

SPC Staff Profile
Leann C. Chaney, AICP
Transportation Planner

SPC Commission
April 29, 2019



education



Where We Live...

ICOPD 2000-2012

A Comprehensive Plan for Indiana County, Pennsylvania
Connecting people with each other, with communities and with the countryside

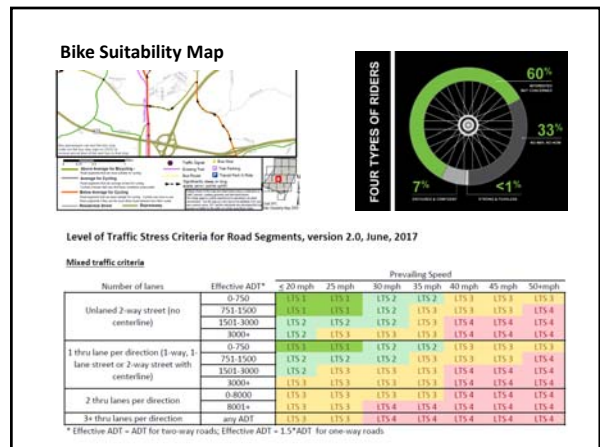
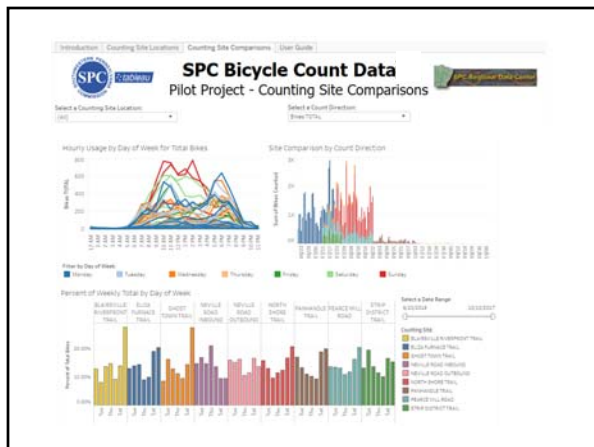
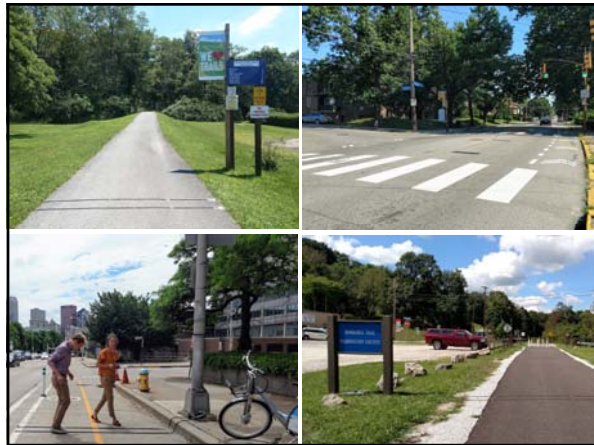


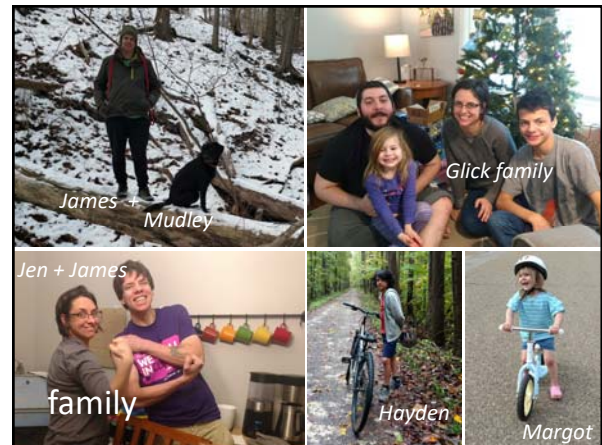
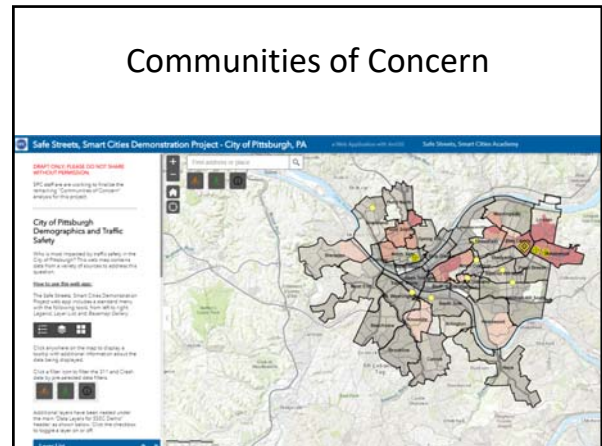
Chaney Associates
2002-2015





2012-2015





Action

Resolution 2-19 Adopt the Active Transportation Plan

Draft Regional Active Transportation Plan

S.P.C. Commission
April 29, 2019

What is Active Transportation?

"Active transportation" refers to any human powered mode of transportation that engages people in healthy physical activity while they travel from place to place – primarily walking and bicycling.

Planning Context

- Advances the region's Long Range Plan.
- Regional context -local planning and project implementation help achieve the regional vision.
- Provides technical resources that local governments can use in active transportation planning and project development.

Public Engagement

Stakeholder Meetings

- 5 Listening Sessions
- 7 Active Transportation Forums
- 10 Public Participation Panels (spring 2017)

Surveys

- Safe Routes to School
- Objectives Ranking

Direct Reach: 1,151

▪ Listening Session / Indiana County	8
▪ Listening Session / Pittsburgh	13
▪ Listening Session / TOC	17
▪ Listening Session / TTC	38
▪ Listening Session / ATF	37
▪ Active Transportation Forums	245
▪ PPPs / fall 2017	149
▪ Safe Routes to School survey	95
▪ Objectives ranking survey	549

Objectives Ranking Survey

How important are the following objectives for improving conditions for people who walk or bicycle in our region?

- 1 Support regional collaboration on planning for active transportation corridors and encourage connectivity within and between local and regional networks, including multistate networks.
- 2 Emphasize infrastructure improvements that make people feel safe and comfortable when walking, bicycling or using transit in both urban and rural areas.
- 3 Encourage infrastructure improvements that increase bicycle and pedestrian access to trails, open spaces and recreational facilities to increase opportunities for physical activity and promote improvements in public health outcomes.

Active Transportation Plan Goals

- Strengthen Communities
- Improve Safety and Security
- Enhance Accessibility and Connectivity
- Improve Public Health + Enhance the Environment

Existing Conditions

Active Transportation Profiles

Active Transportation Profiles

- 43 miles: Bike Route
- 33 miles: Trail
- 14 miles: Pedestrian Path
- 0 miles: Multi-Use Trail

Existing Conditions

Miles of Routes	Miles of Local Bike Routes	Miles of the Blue Route	Miles of the Blue Route 10	Miles of the Blue Route 100
250	326	122	3	
Miles of Trails	Miles of Shared-Use Paths	Miles of Trail	Miles of Designated Multi-Use Trail	
38	50	870	485	
Programs and Policies	Complete Streets Policies	Trail Plans	Safe Routes to School Plans	
1	4	12	3	
Other	Walk-Friendly Communities	Walk-Friendly Communities	Walk-Friendly Communities	
14	2	12		

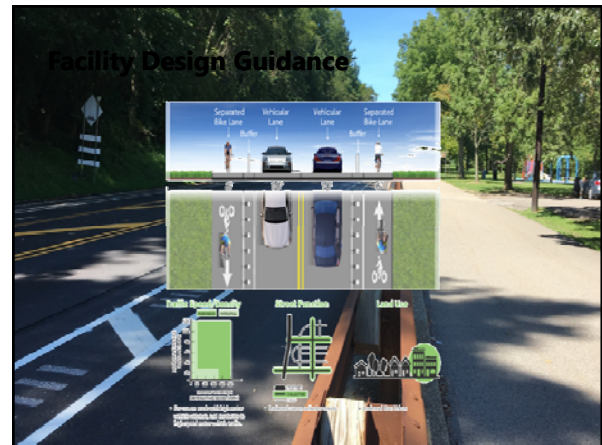
Guiding Principles

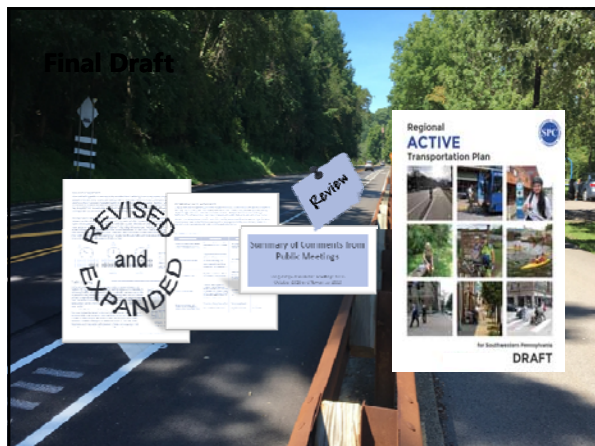
The 6 E's

- Education
- Encouragement
- Enforcement
- Equity
- Empowerment
- Engagement

Policies, Programs and Initiatives

- Vision Zero Platform
- The Elements of a Complete Streets Policy
- SafeRoutes
- EVERY MOVE YOU MAKE TOWARD ZERO DEATHS
- WalkWorks
- WALK FRIENDLY COMMUNITIES
- THE LEAGUE OF BICYCLE FRIENDLY CITIES





Southwestern Pennsylvania Commission April 29, 2019
Agenda Item No. 6

Action

Resolution 2-19

Adopt the Active Transportation Plan

Southwestern Pennsylvania Commission April 29, 2019
Agenda Item No. 7

Action

Resolution 3-19

**Proclaim May 2019 as
“National Bike Month” in
Southwestern Pennsylvania**



2017



2018



Southwestern Pennsylvania Commission April 29, 2019
Agenda Item No. 8

Action

Resolution 3-19

Proclaim May 2019 as
"CommuteInfo Commute Options
Awareness Month" in
Southwestern Pennsylvania

Southwestern Pennsylvania Commission April 29, 2019
Agenda Item No. 9

Update

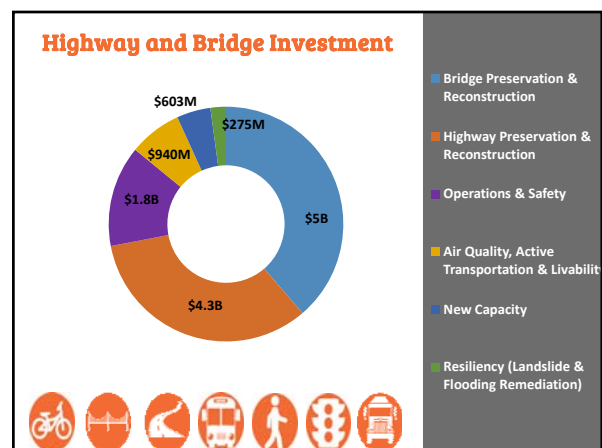
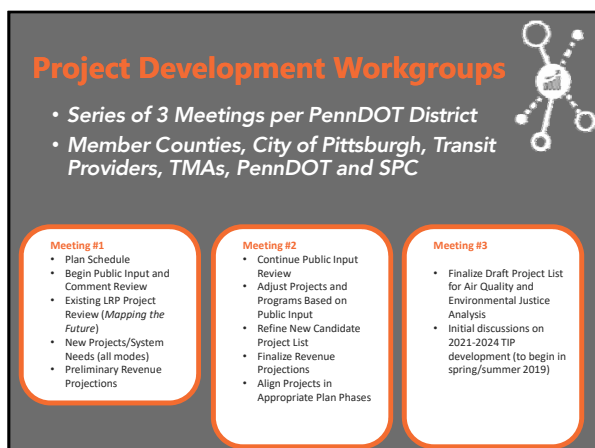
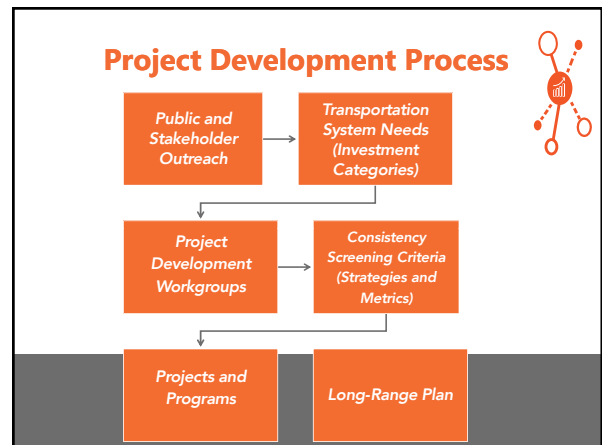
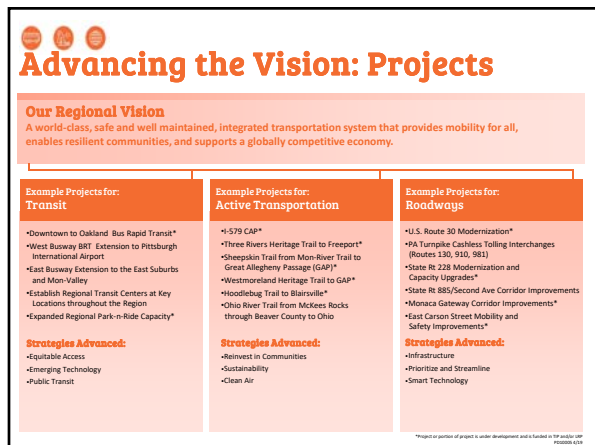
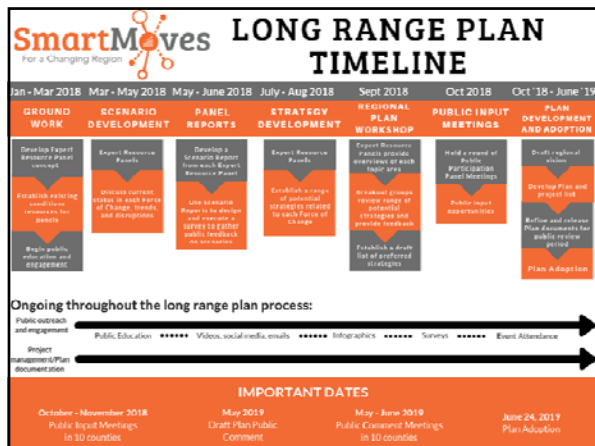
SmartMoves for a Changing Region



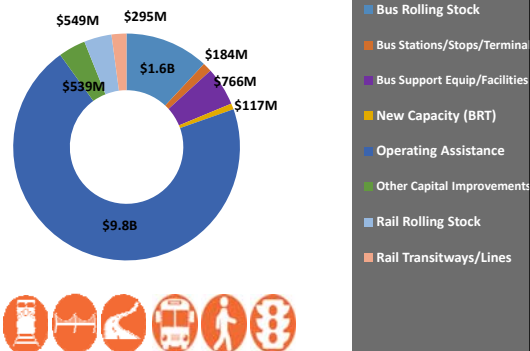
OVERVIEW

- Plan Timeline
- Goals and Vision
- Project Development
- Investments
- Priorities
- Regional Corridors
- Air Quality/Environmental Justice
- Public Engagement





Public Transit Investment



County Focus Areas

Allegheny County

- Corridor Improvements (Routes 8, 19, 28, 30, 51, 65, I-376 & I-79)
- Rapid Public Transit Connections – Downtown to Airport, East Busway to Mon Valley and East Suburbs, Downtown to North Hills, Oakland
- Trail Extensions: (Three Rivers Heritage, Ohio River, Carrie Furnace, Allegheny Riverfront Green Boulevard, WHT to GAP Connector)
- Smallman St. and Smithfield St. Reconstruction

Armstrong County

- Corridor Improvements (Routes 28, 56, 68, and 422)
- Freeport Borough: Four Corners Trailhead and Armstrong Trail
- Apollo Bridges (PA 56)

County Focus Areas

Beaver County

- Corridor Improvements (Routes 51, 65, 68 & 2004)
- Broadhead Rd (SR 151) Improvements
- Ambridge-Aliquippa Bridge Rehabilitation
- Ohio River Trail Development

Butler County

- Corridor Improvements (Routes 8, 19, 68, I-79, 228, 356, 422 & 3020)
- Park and Ride Expansion (Route 8, 68, & Slippery Rock Borough)
- Hanson Avenue Improvements
- Commodore Perry Trail Network Development

County Focus Areas

Fayette County

- Corridor Improvements (Routes 21, 40, 119, & 381)
- Layton Bridge Reconstruction or Replacement
- Sheepskin Trail Extension

Greene County

- Corridor Improvements (Routes 19, 88)
- I-79 Mount Morris Area Safety Improvements
- PA 19/221 Ruff Creek Interchange Improvements including Park-n-Ride
- Greene River Trail Extension

County Focus Areas

Indiana County

- Corridor Improvements (Routes 22, 119 & 422)
- Indian Springs Road/Rustic Lodge Improvements
- Hoodlebug Trail Extension/Route 22 Bicycle & Pedestrian Bridge
- IRMC Health Care District Pedestrian Improvements

Lawrence County

- Corridor Improvements (19, 65, 422 & 956)
- Mitchell Road Multimodal Improvements
- East Washington Street Bridge Replacement
- Columbus Interbelt Improvements

County Focus Areas

Washington County

- Corridor Improvements (Routes 18, 19, 40, I-70, I-79, 1002 & 1025)
- Panhandle Trail Extension
- Freedom Transit Maintenance Facility
- Donora Monessen High Level Bridge Rehabilitation

Westmoreland County

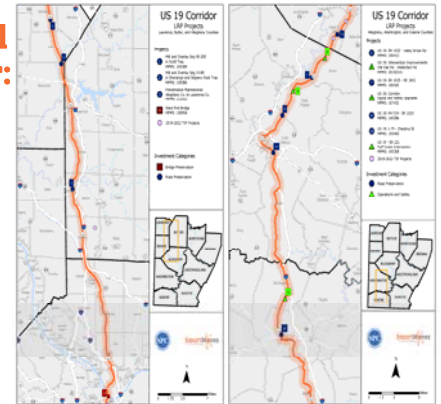
- Corridor Improvements (Routes 30, 119, 356 & 981)
- Laurel Valley Transportation Improvement Project
- Trail Extensions (Westmoreland Heritage Phase 5, Five Star)
- West Newton Bridge Reconstruction

Interstate Needs

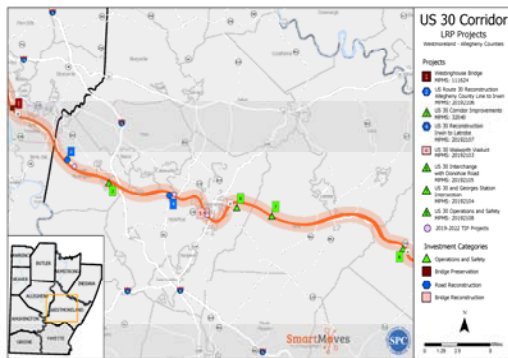
- **I-376 East:** Asset Management, Safety and Congestion Improvements, Interchange Improvements, Commercial St. Bridge Replacement, Frazier St. Bridge Rehabilitation
- **I-376 West:** Asset Management, Banksville, Green Tree, & Carnegie Interchange Improvements
- **I-279:** Asset Management
- **I-79:** Asset Management, Widening, Safety and Operations - Washington to SR 528, Interchange Improvements
- **I-70:** Asset Management, Modernization, Interchange Improvements



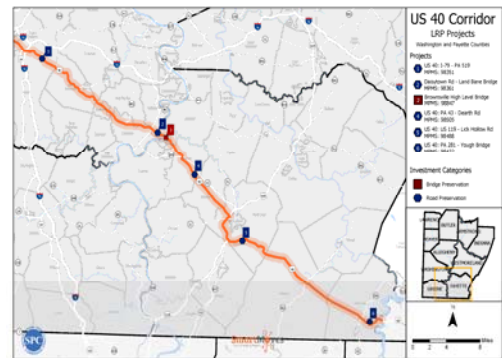
Regional Corridor: US 19



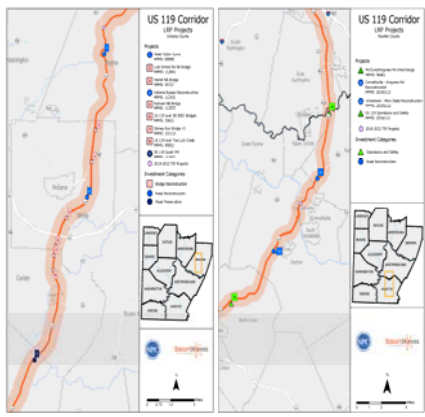
Regional Corridor: US 30



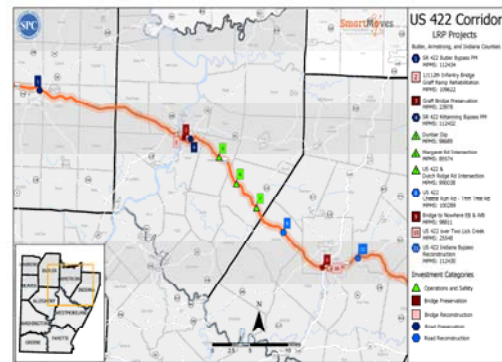
Regional Corridor: US 40



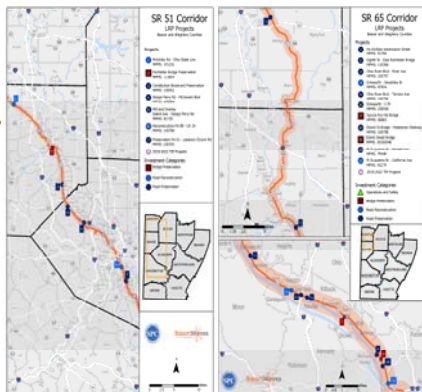
Regional Corridor: US 119



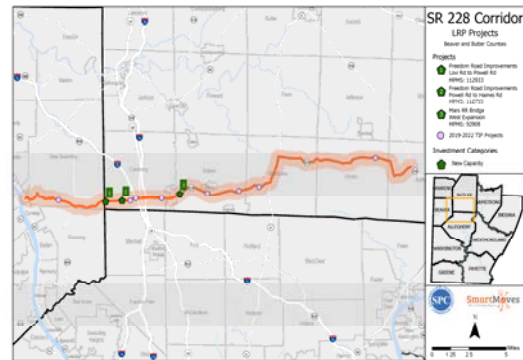
Regional Corridor: US 422



Regional Corridors: SR 51 & SR 65

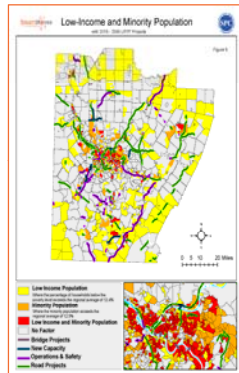


Regional Corridor: SR 228/Freedom Rd.

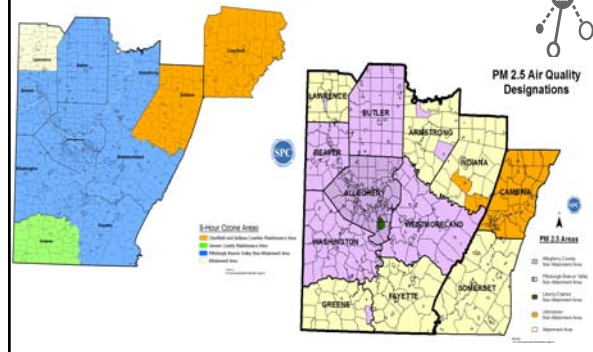


Environmental Justice

- Identify disproportionately high and adverse human health or environmental effects of the respective agency's programs, policies and activities on low-income populations and minority populations.
- Ensures social equity in programming transportation investments, including full and fair participation by all potentially affected communities in the transportation decision making process



Air Quality Conformity



Public & Stakeholder Outreach

- Expert Resource Panels
- Forces of Change Survey & Comments
- Smart Moves Webpage and Videos
- Public Meetings:
 - Regional Plan Workshop
 - PPP & Public Engagement
- SPC Committees
- Emails & Media
 - Email Contacts
 - Social Media
 - TV/Radio
 - Newspaper

15,086 points of engagement!

PPP Schedule

Public Comment Period: May 6 – June 7

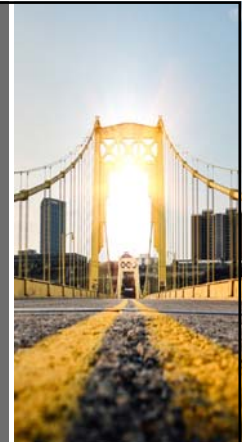
- May 6, Beaver County
- May 9, Fayette County
- May 13, Westmoreland County
- May 22, Allegheny County & City of Pittsburgh
- May 23, Butler County
- May 29, Lawrence County Courthouse
- May 30, Washington County
- June 3, Armstrong County
- June 4, Indiana County
- June 5, Greene County

Open House Promotion



Next Steps:

- PPP and Public Meetings
- Regional Speaking Engagements
- Public Engagement Summary
- Final Plan Edits
- Plan Adoption - June 24, 2019



Questions?

Southwestern Pennsylvania Commission April 29, 2019
Agenda Item No. 10

2020 Census Complete Count Committee

United States
Census
2020

Complete Count Committees: Overview

Why do we take the census?

- U.S. Constitution, Article 1, Section 2 mandates Census to provide the data for an apportionment of representatives among the states for the House of Representatives every 10 years
- By law, the U.S. Census Bureau must deliver a report of population counts to the President of the United States within 9 months of Census Day (on or before December 31, 2020) so that apportionment can be taken

United States
Census
2020



8
5

The 2020 Census A New Design for the 21st Century



United States
Census
2020

8
6

2020 Census vs 2010 Census

- In 2020, we will introduce new technology to make it easier than ever for individuals to respond to the census.
- For the 1st time, you will be able to respond online, by phone, or by mail. We will use data that the public has already provided to cut down on household visits.
- We are building a more accurate address list and automating our field operations—all while keeping your information confidential and safe.

United States
Census
2020



8
7

How are census data used?

- Assisting tribal, federal, state and local governments in planning, and implementing programs and services in:
 - Education
 - Health care
 - Transportation
 - Social services
 - Emergency response
- Distribution of more than \$675 billion annually in federal funds
- Redistricting of state legislative districts
- Forecasting of future transportation needs
- Determining areas eligible for housing assistance and rehabilitation loans

United States
Census
2020



8
8

The Census is Confidential, and that confidentiality is required by Law

1. The Census Bureau is required by law to keep information confidential. All responses provided on the 2020 Census questionnaire or to a Census Bureau employee are confidential and protected under Title 13 of the U.S. Code
2. We will never share a respondents personal information with other government agencies
3. Results from the census are reported in statistical summary format only
4. Records are confidential for 72 years by law (Title 44, U.S. Code)
5. All Census Bureau employees swear a lifetime oath to protect respondent information.
6. Penalty for wrongful disclosure is up to 5 years imprisonment and/or a fine of \$250,000

United States
Census
2020



8
9

What are Complete Count Committees?

- CCC is a committee established by tribal, state and local governments, and community leaders or organizations to increase awareness and motivate residents to respond to the 2020 Census
- CCCs are "census ambassadors" that play an integral part in the 2020 Census
- Preparation (Required): Briefing, Press Conference and Training

United States
Census
2020



9
0

Overview of CCCs

- CCCs are one of the core strategic elements of the Partnership program for the 2020 Census
- Census Bureau works with tribal, state and local governments, and community organizations to form CCCs around the country
- CCCs exist to plan and implement locally-based outreach campaigns that raise awareness of the census and ultimately drive participation



United States
Census
2020

9
1

What is the subcommittee structure of CCC?

State Government CCCs can be a SCCC or a CCC. The structure should consist of influential members. Below are suggested membership for this sub team:

- Government
- Workforce development
- Faith-based community
- Education
- Media
- Technology
- Community organizations
- Business



United States
Census
2020

9
2



Joint County-City
Complete Count Committee



Overview

1. CCC Composition
2. Subcommittee Structure
3. 2018 – 2019 Highlights
4. Best Practices & Lessons Learned
5. Q&A

Appointed in October 2018, the CCC Provides Oversight & Input

Co-Chaired by Gregg Behr, Executive Director of the Grable Foundation; Betty Cruz, Founder and All for All Project Director of the Change Agency; and Stefani Pathmar, CEO of the Allegheny Conference on Community Development

Jennifer Blatz AARP	Rosamaria Cristello Latino Community Center	Mark Jones Highmark Health	Brian Magee Pittsburgh Urban Magnet Project	Victoria Snyder Ya Momz House
Fred Brown Greater Pittsburgh Nonprofit Partnership	Kelci Denigan Allegheny County Library Association	Darrin Kelly Allegheny County Labor Council	Brian Matous Pittsburgh Mercy's Operation Safety Net	Ben Stahl Veterans Leadership Program of Western PA
Brian Burley #YNGBLKPGH	Rachel Fredericks UPMC	Brian Kennedy Pittsburgh Technology Council	Wasi Mohamed Islamic Center of Pittsburgh	Ty Williams Carnegie Mellon University
Susan Chersky Pittsburgh Public Schools	Bob Gradeck Western PA Regional Data Center	Benedict Killang Allegheny County	Kheir Mugwaneza Allegheny Health Network	Irene Yelovich Carnegie Library of Pittsburgh
Cara Ciminillo Trying Together	Andrew Johnson Community College of Allegheny County	Krysis Kubiak Duquesne Light	Brian Schrieber Jewish Community Center	
Jamaal Craig PA Interfaith Impact Network	Traci Johnson POISE Foundation	Marian Mei-Ling Lien Squirrel Hill Urban Coalition		

Members of the committee continued to work on identification of communities or needs

95



CCC
Structure

There are 6 Subcommittees within the CCC including:

1. Public Fabric
2. Workforce
3. Community Voices
4. Education
5. Data
6. Government

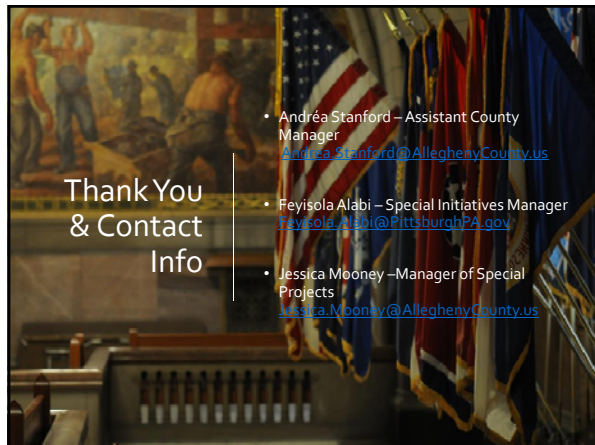
These Subcommittees are working to develop a 2020 Census Plan of Action for Allegheny County.

2018 – 2019 Highlights

- ✓ Meet & Greet – September 2018
- ✓ Joint Press Conference – October 2018
- ✓ CCC Training – October 2018
- ✓ CCC Meeting – December 2018
- ✓ CCC Meeting – January 2019
- ✓ Subcommittee Meetings – February 2019
- ✓ CCC Meeting – March 2019
- ✓ Subcommittee Meetings – April 2019
- ✓ CCC Meeting – May 2019



Best Practices & Lessons Learned



Thank You & Contact Info

- Andréa Stanford – Assistant County Manager
Andrea.Stanford@AlleghenyCounty.us
- Feyisola Alabi – Special Initiatives Manager
Feyisola.Alabi@PittsburghPA.gov
- Jessica Mooney – Manager of Special Projects
Jessica.Mooney@AlleghenyCounty.us

Southwestern Pennsylvania Commission

April 29, 2019

Agenda Item No. 11

Committee Reports

Southwestern Pennsylvania Commission

April 29, 2019

Agenda Item No. 12

Staff Report/ Other Business/Announcements

- Next Meeting Date—June 24, 2019

Southwestern Pennsylvania Commission

April 29, 2019

Agenda Item No. 13

New Business

Adjourn



April 29, 2019