

Regional Broadband Connectivity Existing Conditions Analysis



Regional broadband connectivity existing conditions analysis

The Southwestern Pennsylvania Commission (SPC) is the cooperative forum for regional collaboration, planning, and public decision-making. The Commission serves as the official Metropolitan Planning Organization (MPO) and Local Development District (LDD) for a 10-county region in Southwestern Pennsylvania including the City of Pittsburgh and the counties of Allegheny, Armstrong, Beaver, Butler, Fayette, Greene, Indiana, Lawrence, Washington, and Westmoreland.

SPC and its Steering Committee members (Carnegie Mellon University and Allies for Children) examined the current state of broadband related coverage, speed, resources, gaps, and needs in relation to the region's demographic and socioeconomic conditions. SPC also examined connectivity in relation to the region's businesses, educational, and medical facilities. Using existing local and national open-source datasets, SPC analyzed, collected, and compared all broadband and socioeconomic data and identified gaps in regional access, adoption, and affordability.

Once gaps in the broadband service were identified, two Connectivity Indices were developed. The first one focused on broadband accessibility in the region, while the second Index focused on adoption and equity. Environmental Justice and Title VI data was analyzed and incorporated to create the Connectivity Indices. These two Indices were used to further the analysis by identifying, evaluating, and prioritizing areas where the greatest disparity between coverage, speed, and affordability of high-speed broadband connectivity access in relation to the demographic and socioeconomic conditions in rural and urban populations of the region.



Serving the region

The Commission serves as the official MPO and Local Development District for a 10-county region in Southwestern Pennsylvania, shown above.

The final product of the Connectivity Indices analysis was a set of Connectivity Opportunity Areas (COAs). These COAs will act as the equity component in the project analysis and prioritization process for future connectivity project development efforts. The COAs can also potentially be the basis for the development of incentives in their respective geographic areas such as streamlined permitting and regulations, tax credits, and others to spur high-speed connectivity deployment. An ArcGIS Online web mapping application has been created to share the final results of the existing conditions analysis, where the Connectivity Indices and COAs results can be viewed and used to analyze existing conditions via the links presented in the ArcGIS analysis online breakdown on Page 3 of the Executive Summary.



Behind the data. ...

Data related to Environmental Justice and Title VI was analyzed and incorporated to create the Connectivity Indices.

Existing conditions analysis highlights

- Approximately 87,000 census block records are within the 10-county SPC region and were used as the basis of the analysis.
- Approximately 170 data points were used to create the existing condition analysis data for viewing on the ArcGIS Online web mapping dashboard applications.
- Environmental Justice and Title VI factors, along with computer ownership and internet access by age and race statistics, were collected from U.S. Census American Community Survey (ACS) data.
- Mobile broadband access, along with fixed broadband access, speed, and provider availability, is a derivative product cultivated from datasets such as FCC Form 477, OOKLA, and MLAB.
- For the 10-county SPC region, the percent of population within the Broadband Access Index COAs is 3%, while the percent of population within the Adoption and Equity Index COAs is 21%. The Broadband Access Index COAs comprise 16% of the total square miles in the region, while the Adoption and Equity Index COAs comprise 26% of the total square miles.

As data gaps are identified and additional data is collected and purchased, the new data will be added to the Indices and used to refine the Opportunity Areas. The Connectivity Indices and COAs will be available through the ArcGIS Online application.

This data will be used as a baseline to further build upon the SPC's Strategic Plan of developing a Connectivity Roadmap for the 10-county SPC region. This future strategic plan will examine the current and true state of the region's broadband connectivity in relation to the region's demographic and socioeconomic composition and deploy connectivity programs and projects to enable communities of the region lacking adequate high-speed internet access to be better connected to jobs, education, and health care. The future of high-speed connectivity is essential for the 21st Century to be globally competitive.

The following pages in the Executive Summary provide a one-page county-by-county statistical analysis highlighting the Connectivity Indices and COA results along with additional broadband data findings that are within the Broadband Access and Adoption and Equity Indices Dashboards. In addition, there is also a one-page overview of the SPC region with aggregate data analysis and statistics.



ArcGIS analysis available online

An ArcGIS Online web mapping dashboard application has been created to share the final results of the existing conditions analysis. The Connectivity Indices and COAs results can be viewed interactively to see current broadband connectivity conditions, visualize real-time data, and to help SPC evaluate the current state of the region.

Broadband Access Index Dashboard:

<https://gis.mbakerintl.com/portal/apps/opsdashboard/#/9e40e5cbd864431883f03d0218500370>

Adoption and Equity Index Dashboard:

<https://gis.mbakerintl.com/portal/apps/opsdashboard/index.html#/d580a2ebe76b435384e9391b35413b8e>

In addition to the Broadband Access and Adoption and Equity Dashboards, a Fixed Broadband Analysis Story Map was created for a high-level understanding of what fixed broadband speeds, fixed broadband technologies, and fixed broadband providers are available within the 10-county SPC region.

Fixed Broadband Analysis Story Map:

<https://gis.mbakerintl.com/portal/apps/MapSeries/index.html?appid=031fa03428064ea98f8ce9788a202c3d>

Please contact the SPC Project Manager for login information.



10-COUNTY SPC REGION

POPULATION: 2,574,959

BY THE
NUMBERS

11.33%

Minority Population

13.50%

Low-Income
Population

1.25%

Limited
English
Proficiency
Population

15.99%

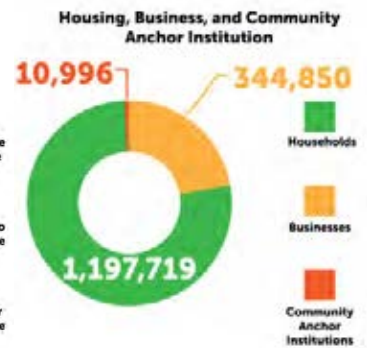
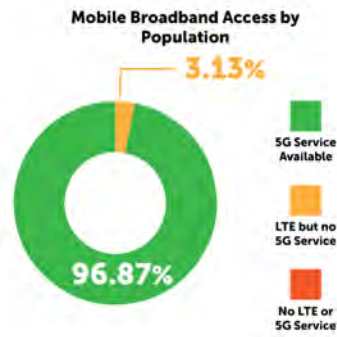
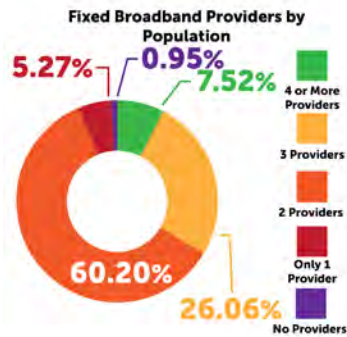
Disabled
Population

10.47%

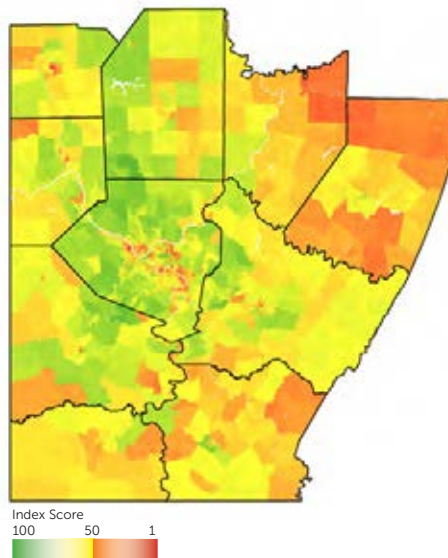
Household
with no
Available
Vehicle

19.19%

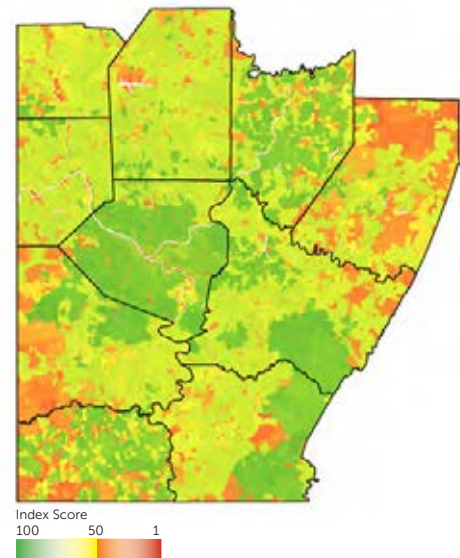
65 years or Older
Adult Population



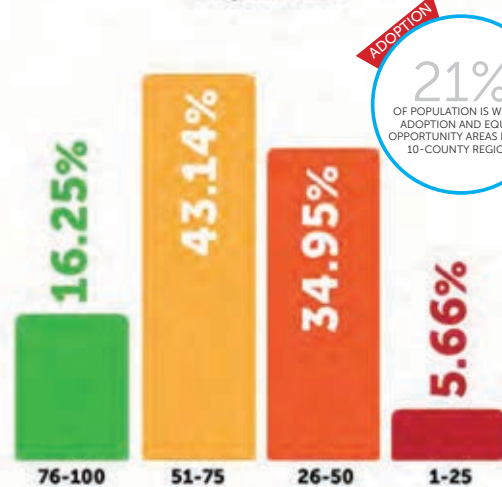
ADOPTION AND EQUITY INDEX



BROADBAND ACCESS INDEX



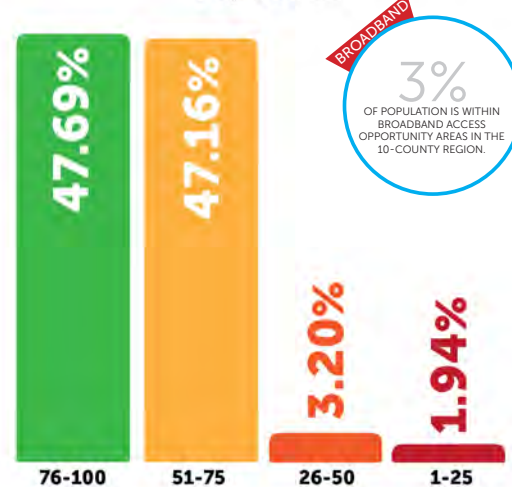
Adoption and Equity Index Score by Population



ADOPTION

21%
OF POPULATION IS WITHIN
ADOPTION AND EQUITY
OPPORTUNITY AREAS IN THE
10-COUNTY REGION.

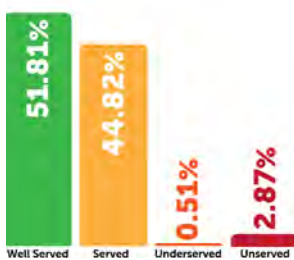
Broadband Access Index Score by Population



BROADBAND

3%
OF POPULATION IS WITHIN
BROADBAND ACCESS
OPPORTUNITY AREAS IN THE
10-COUNTY REGION.

Fixed Broadband Access by Population





ALLEGHENY COUNTY

POPULATION: 1,223,348

BY THE
NUMBERS

22.11%

Minority Population

14.14%

Low-Income
Population

1.95%

Limited
English
Proficiency
Population

14.54%

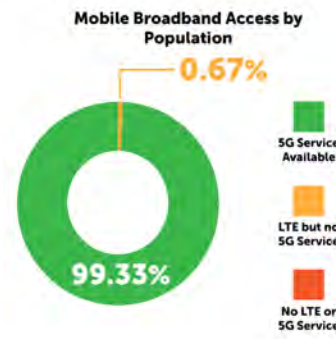
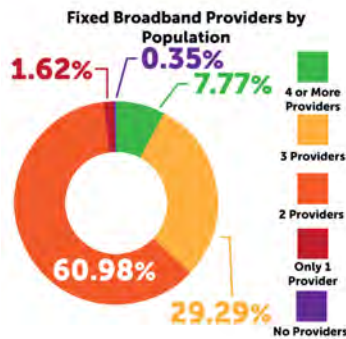
Disabled
Population

14.63%

Household
with no
Available
Vehicle

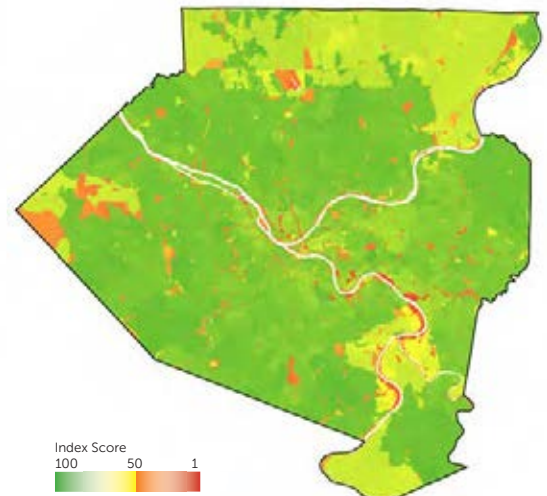
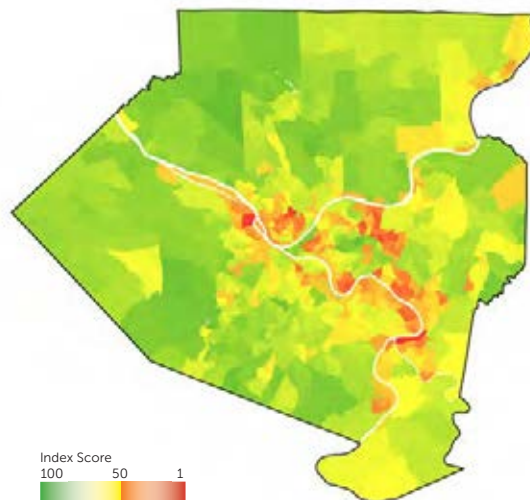
17.84%

65 years or Older
Adult Population



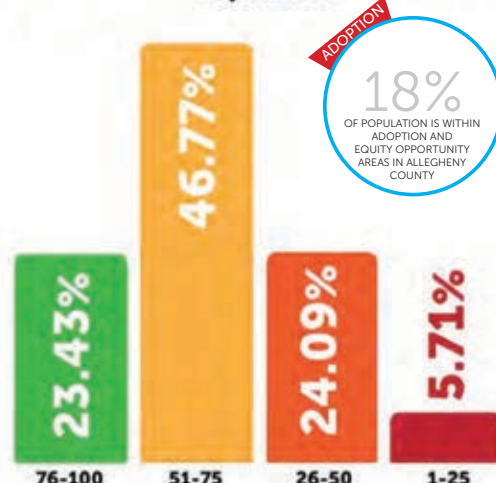
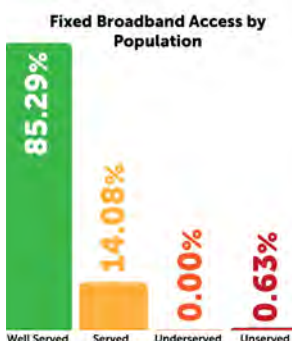
ADOPTION AND EQUITY INDEX

BROADBAND ACCESS INDEX



Adoption and Equity Index Score by Population

Broadband Access Index Score by Population





ARMSTRONG COUNTY

POPULATION: 68,941

BY THE NUMBERS

2.04%

Minority Population

12.28%

Low-Income Population

0.43%

Limited English Proficiency Population

18.93%

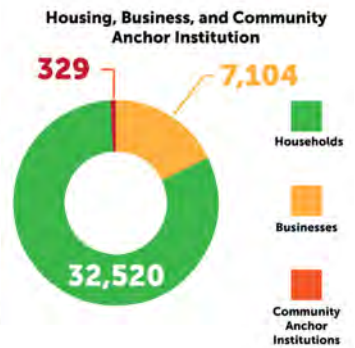
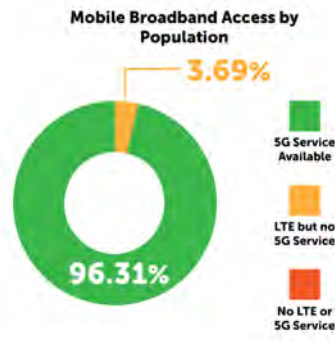
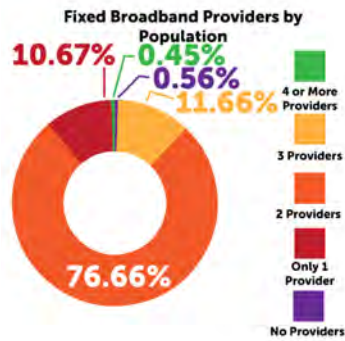
Disabled Population

7.19%

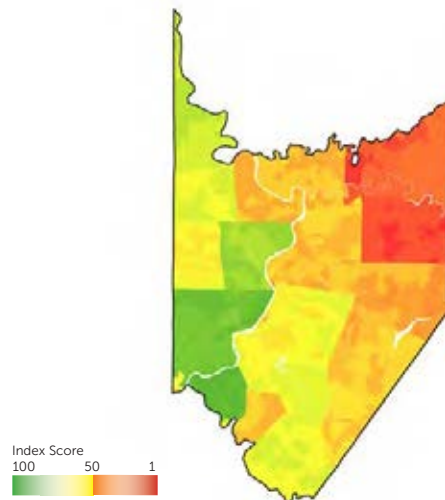
Household with no Available Vehicle

20.54%

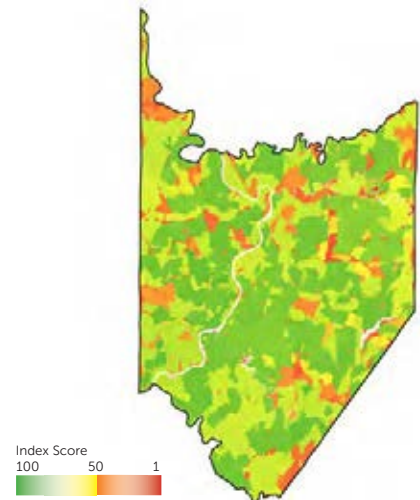
65 years or Older Adult Population



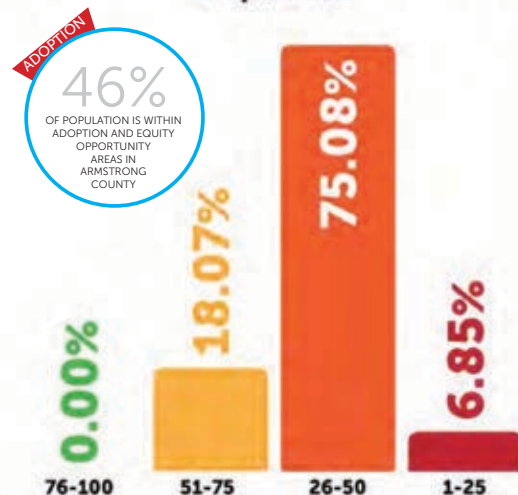
ADOPTION AND EQUITY INDEX



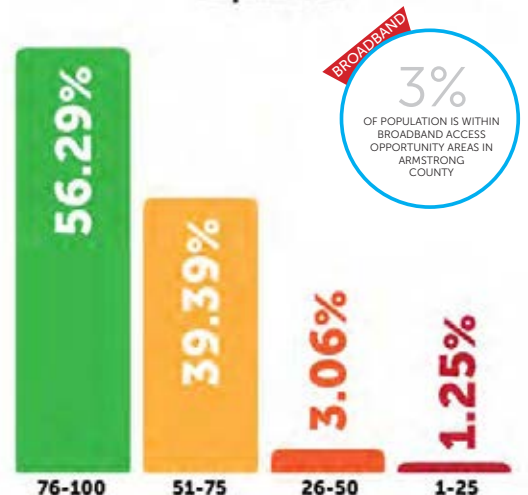
BROADBAND ACCESS INDEX



Adoption and Equity Index Score by Population



Broadband Access Index Score by Population





BEAVER COUNTY

POPULATION: 170,539

BY THE NUMBERS

10.13%

Minority Population

12.28%

Low-Income Population

0.67%

Limited English Proficiency Population

16.09%

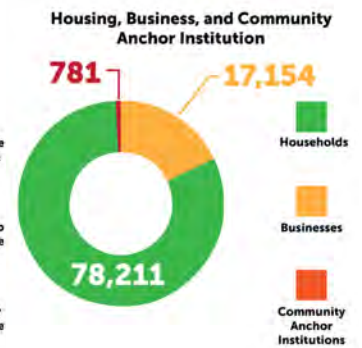
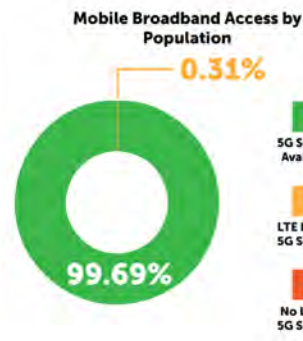
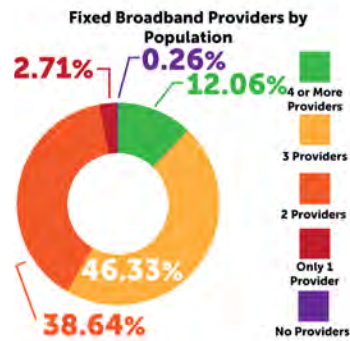
Disabled Population

9.26%

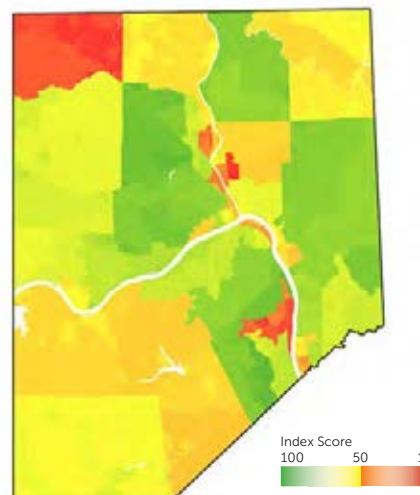
Household with no Available Vehicle

19.62%

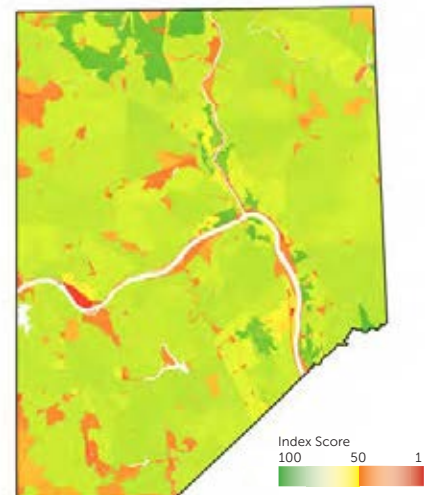
65 years or Older Adult Population



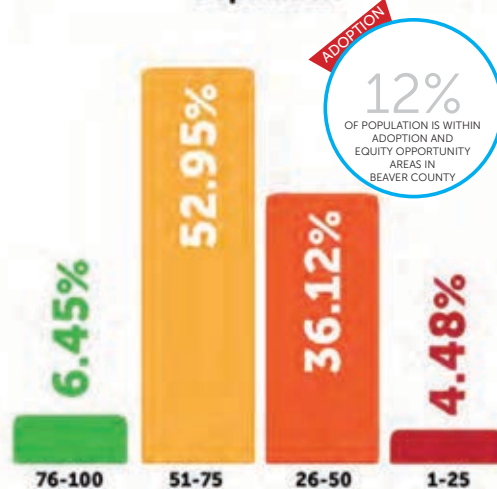
ADOPTION AND EQUITY INDEX



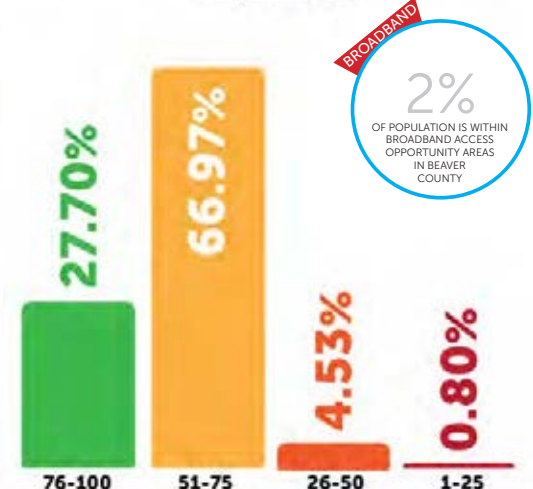
BROADBAND ACCESS INDEX



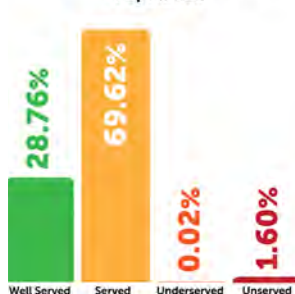
Adoption and Equity Index Score by Population



Broadband Access Index Score by Population



Fixed Broadband Access by Population





BUTLER COUNTY

POPULATION: 183,862

BY THE NUMBERS

3.44%

Minority Population

11.65%

Low-Income Population

0.52%

Limited English Proficiency Population

13.78%

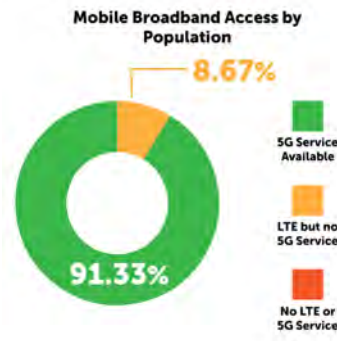
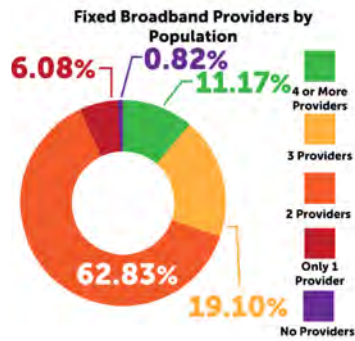
Disabled Population

7.09%

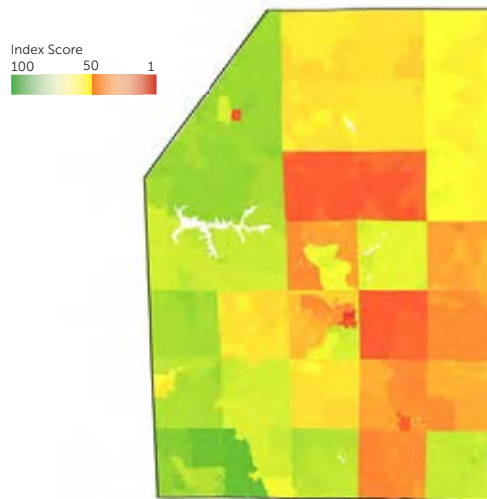
Household with no Available Vehicle

18.37%

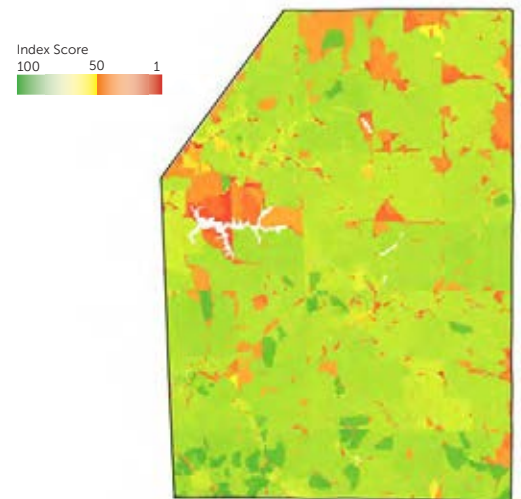
65 years or Older Adult Population



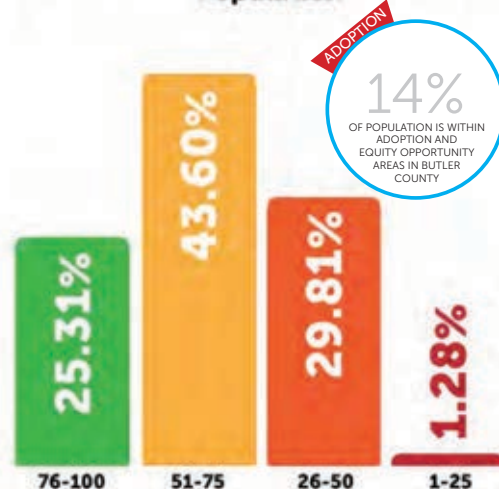
ADOPTION AND EQUITY INDEX



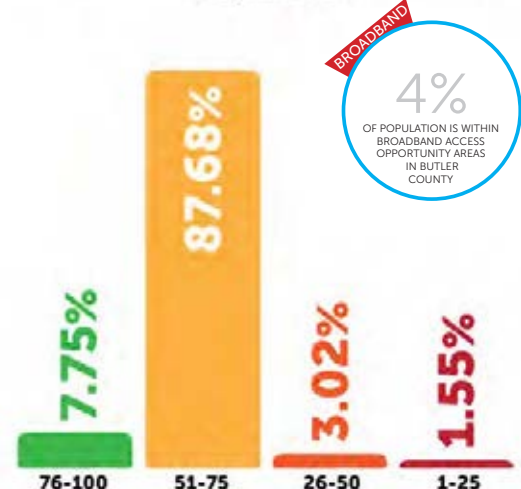
BROADBAND ACCESS INDEX



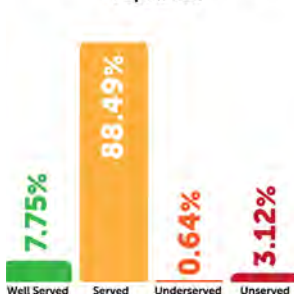
Adoption and Equity Index Score by Population



Broadband Access Index Score by Population



Fixed Broadband Access by Population





FAYETTE COUNTY

POPULATION: 136,606

BY THE NUMBERS

6.96%

Minority Population

18.21%

Low-Income Population

0.90%

Limited English Proficiency Population

18.77%

Disabled Population

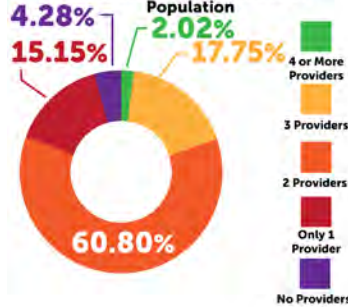
8.81%

Household with no Available Vehicle

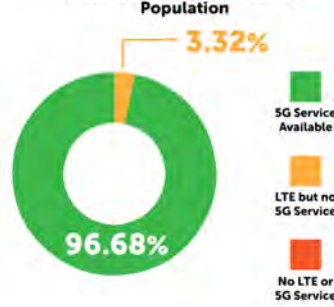
20.04%

65 years or Older Adult Population

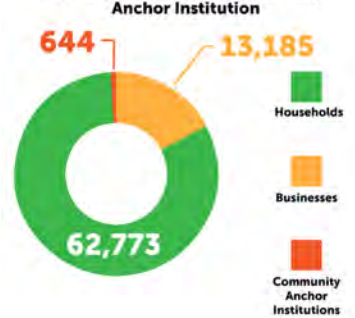
Fixed Broadband Providers by Population



Mobile Broadband Access by Population

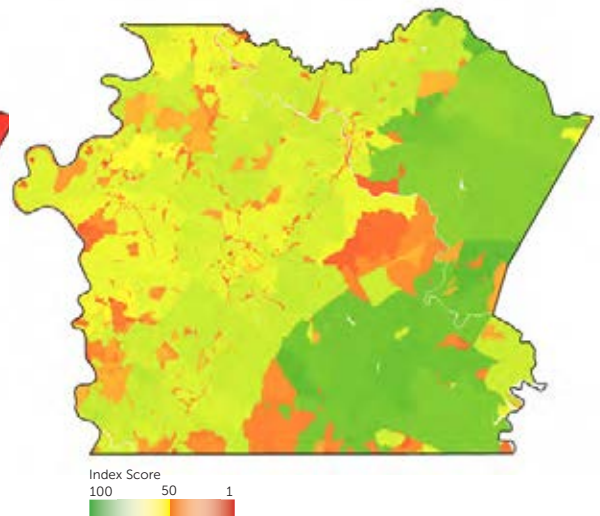
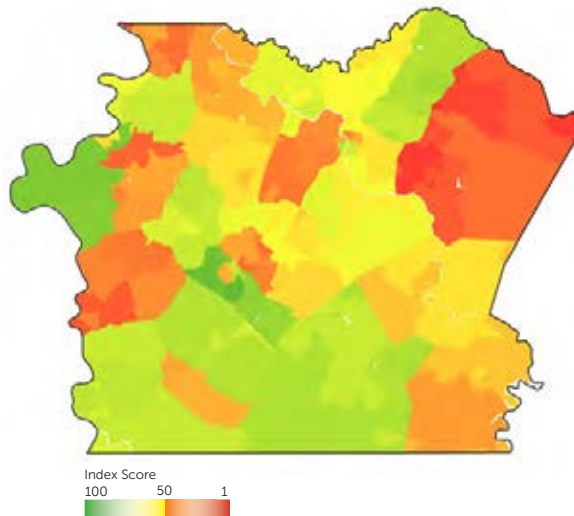


Housing, Business, and Community Anchor Institution

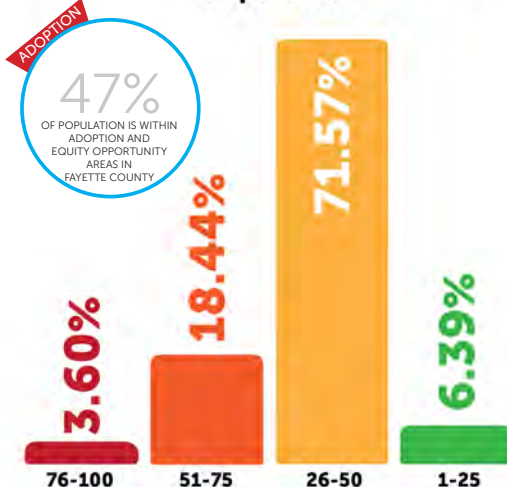


ADOPTION AND EQUITY INDEX

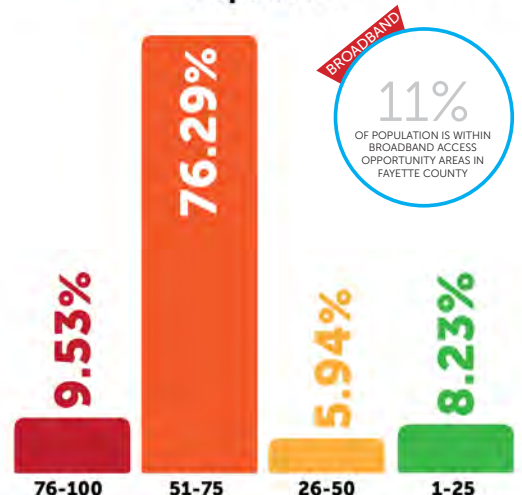
BROADBAND ACCESS INDEX



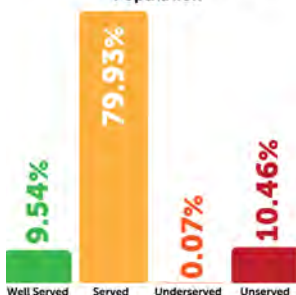
Adoption and Equity Index Score by Population



Broadband Access Index Score by Population



Fixed Broadband Access by Population





GREENE COUNTY

POPULATION: 38,686

BY THE NUMBERS

2.95%

Minority Population

11.98%

Low-Income Population

0.34%

Limited English Proficiency Population

19.74%

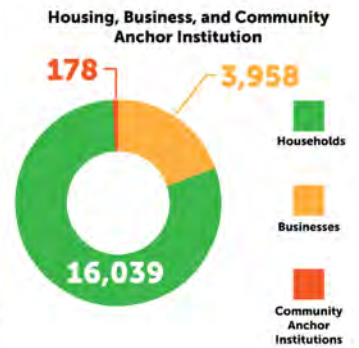
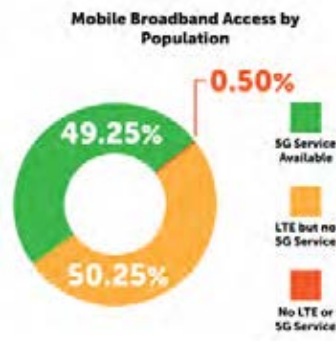
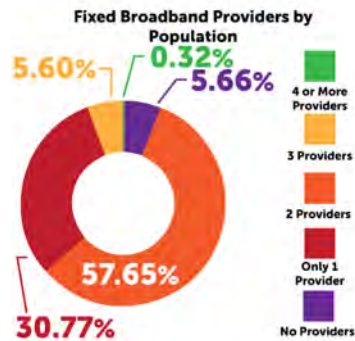
Disabled Population

6.67%

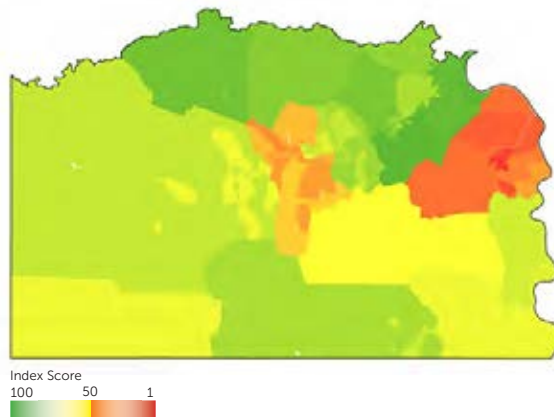
Household with no Available Vehicle

18.05%

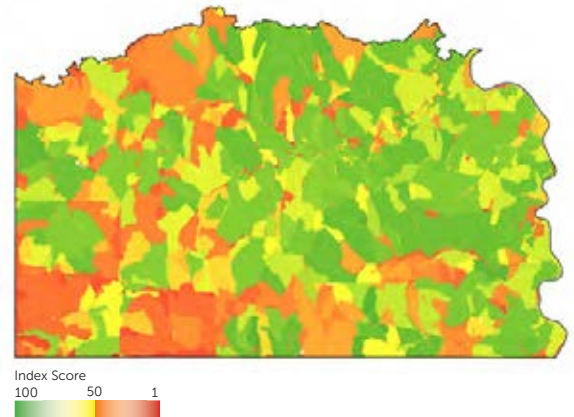
65 years or Older Adult Population



ADOPTION AND EQUITY INDEX

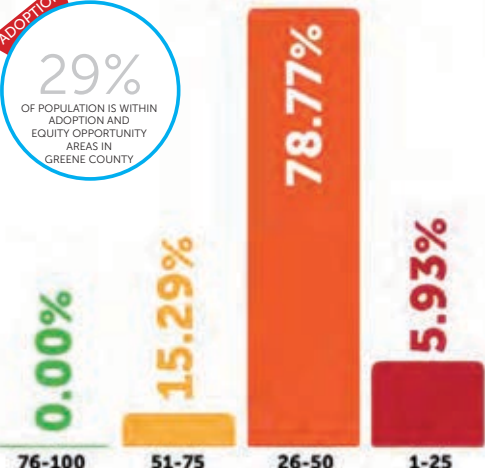


BROADBAND ACCESS INDEX



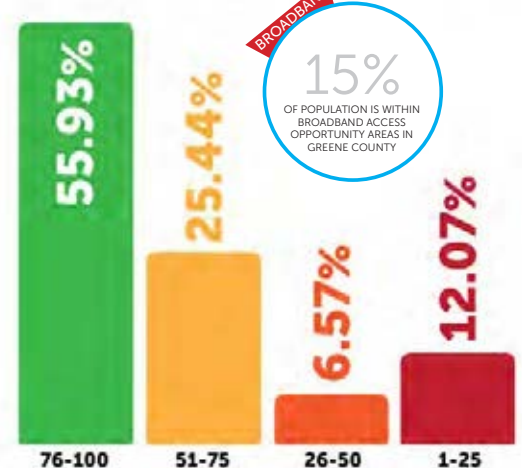
Adoption and Equity Index Score by Population

29%
OF POPULATION IS WITHIN ADOPTION AND EQUITY OPPORTUNITY AREAS IN GREENE COUNTY



Broadband Access Index Score by Population

15%
OF POPULATION IS WITHIN BROADBAND ACCESS OPPORTUNITY AREAS IN GREENE COUNTY





INDIANA COUNTY

POPULATION: 88,880

BY THE NUMBERS

3.19%

Minority Population

13.94%

Low-Income Population

2.68%

Limited English Proficiency Population

15.76%

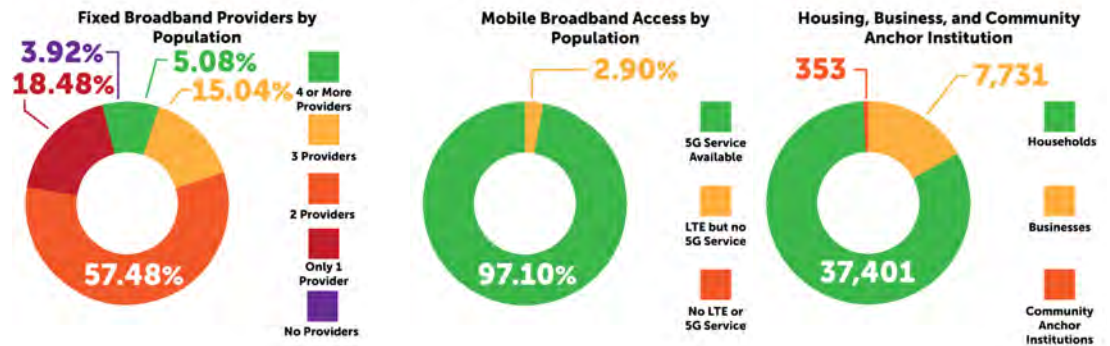
Disabled Population

8.54%

Household with no Available Vehicle

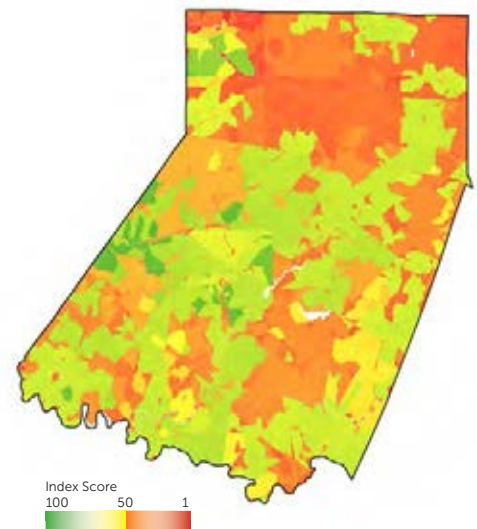
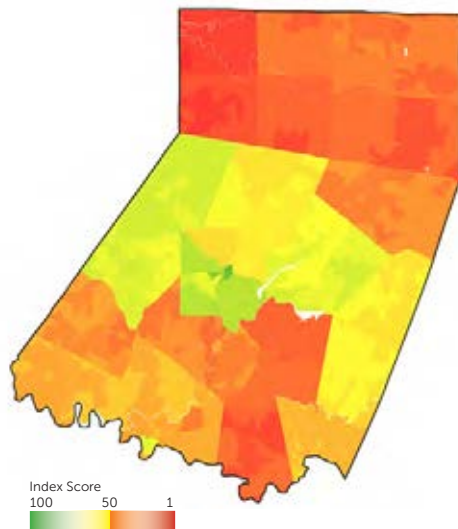
18.44%

65 years or Older Adult Population



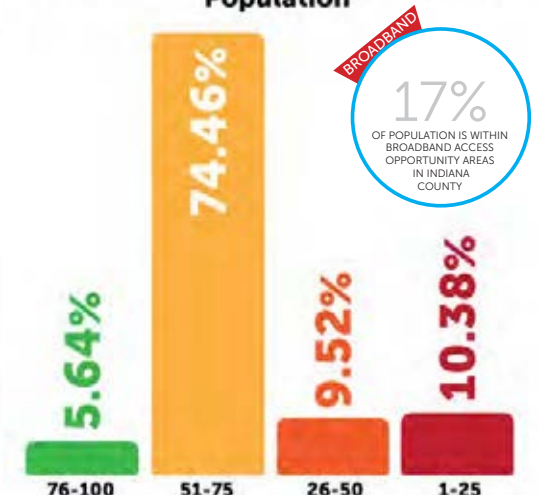
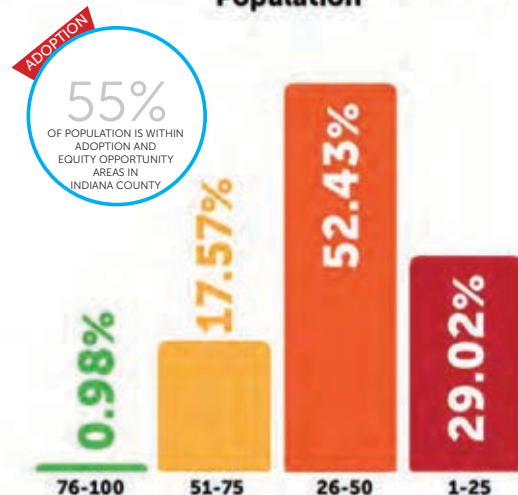
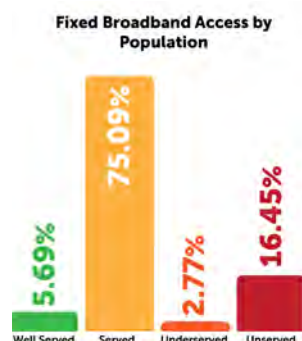
ADOPTION AND EQUITY INDEX

BROADBAND ACCESS INDEX



Adoption and Equity Index Score by Population

Broadband Access Index Score by Population





LAWRENCE COUNTY

POPULATION: 91,108

BY THE NUMBERS

5.38%

Minority Population

12.86%

Low-Income Population

1.24%

Limited English Proficiency Population

16.98%

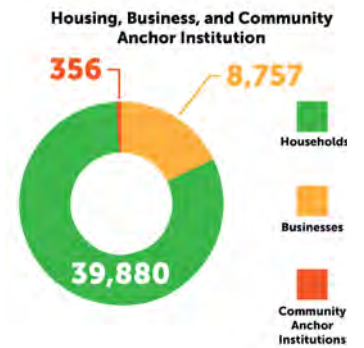
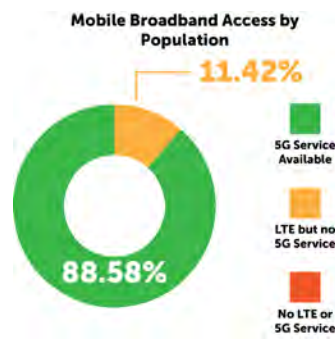
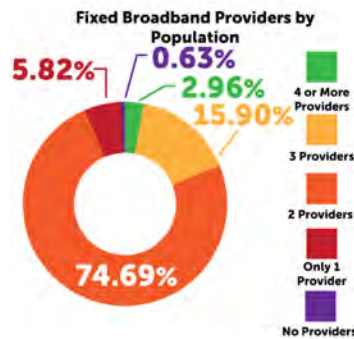
Disabled Population

8.20%

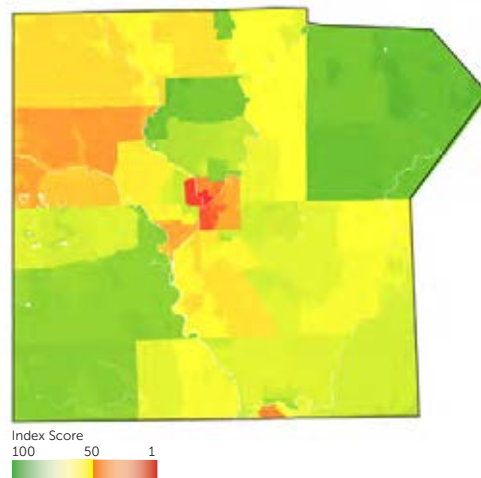
Household with no Available Vehicle

20.59%

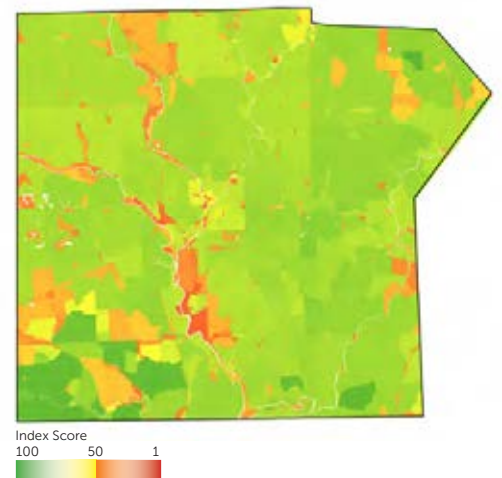
65 years or Older Adult Population



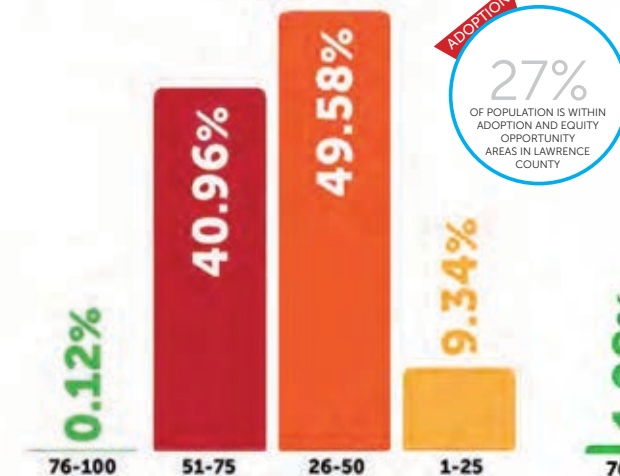
ADOPTION AND EQUITY INDEX



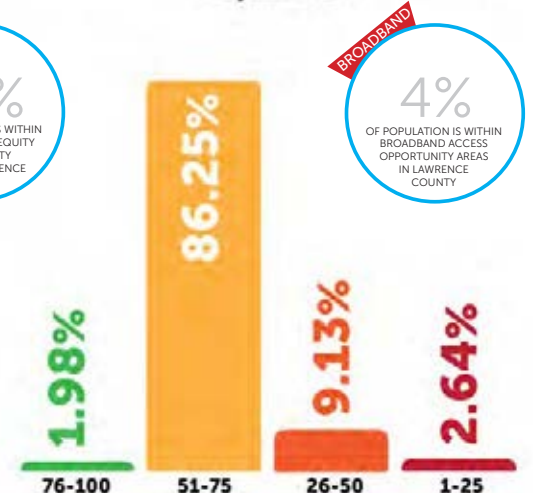
BROADBAND ACCESS INDEX



Adoption and Equity Index Score by Population



Broadband Access Index Score by Population





WASHINGTON COUNTY

POPULATION: 207,820

BY THE NUMBERS

5.90%

Minority Population

11.46%

Low-Income Population

0.85%

Limited English Proficiency Population

16.37%

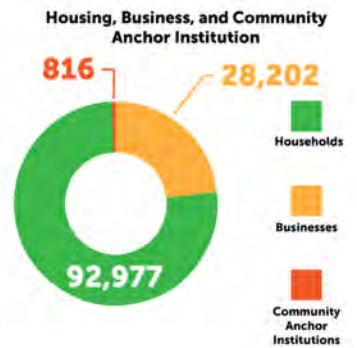
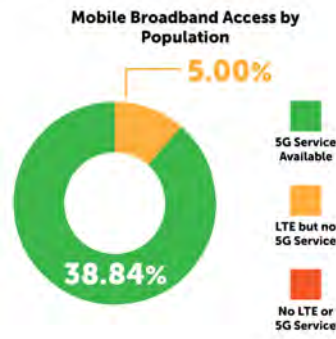
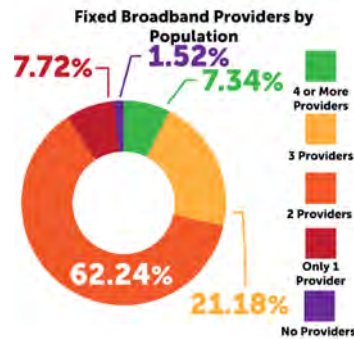
Disabled Population

7.94%

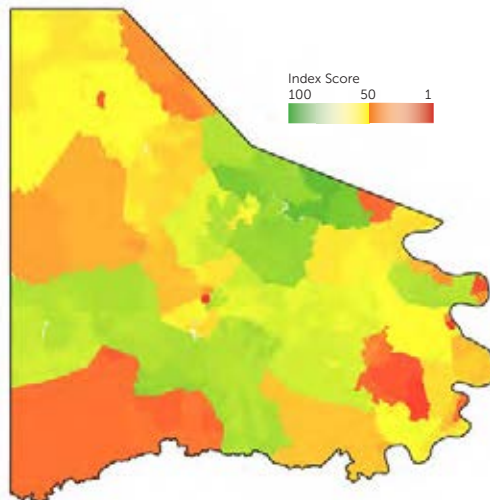
Household with no Available Vehicle

19.44%

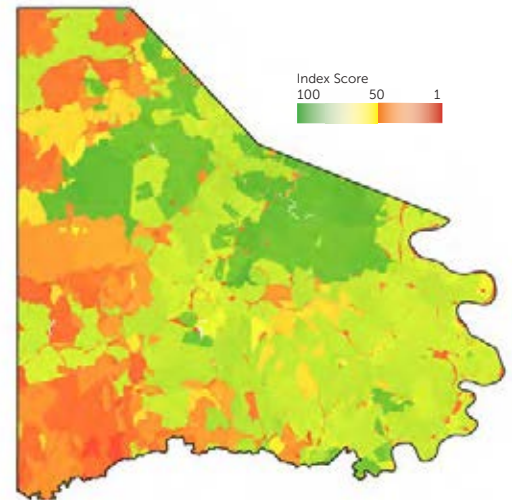
65 years or Older Adult Population



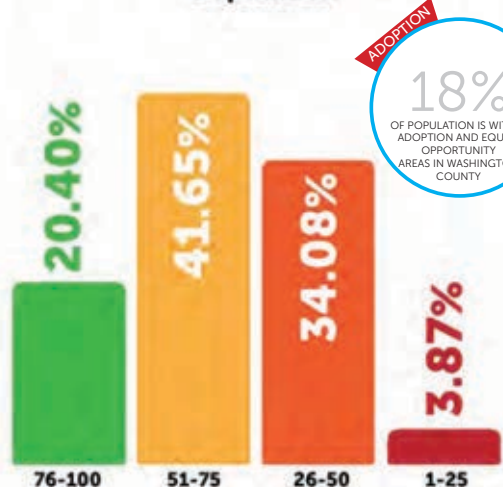
ADOPTION AND EQUITY INDEX



BROADBAND ACCESS INDEX

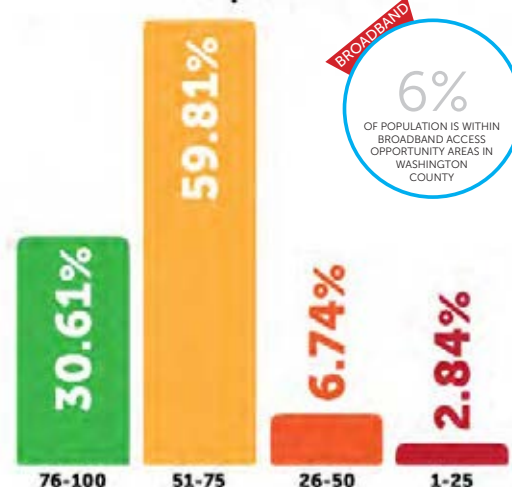


Adoption and Equity Index Score by Population



18%
OF POPULATION IS WITHIN ADOPTION AND EQUITY OPPORTUNITY AREAS IN WASHINGTON COUNTY

Broadband Access Index Score by Population



6%
OF POPULATION IS WITHIN BROADBAND ACCESS OPPORTUNITY AREAS IN WASHINGTON COUNTY

Fixed Broadband Access by Population





WESTMORELAND COUNTY

POPULATION: 365,169

BY THE NUMBERS

5.31%

Minority Population

11.82%

Low-Income Population

0.59%

Limited English Proficiency Population

15.80%

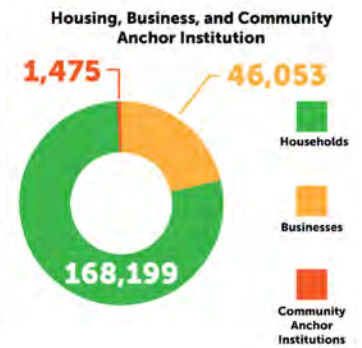
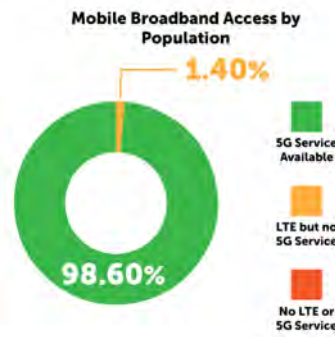
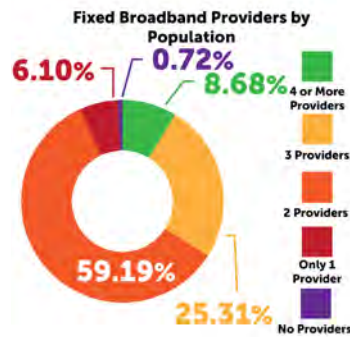
Disabled Population

7.97%

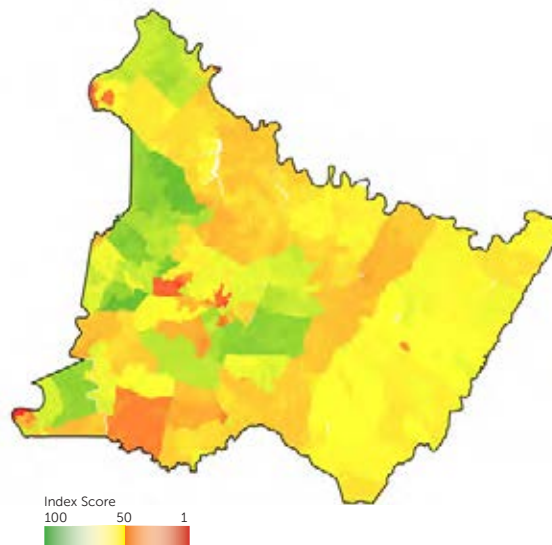
Household with no Available Vehicle

21.00%

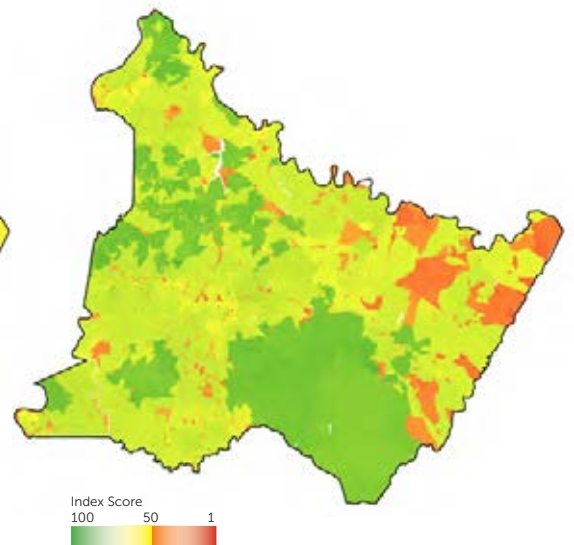
65 years or Older Adult Population



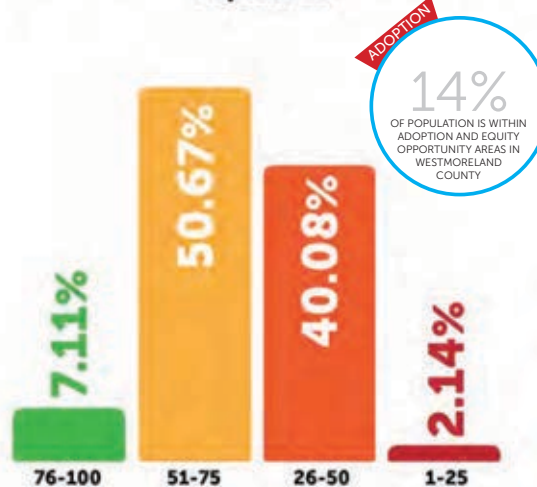
ADOPTION AND EQUITY INDEX



BROADBAND ACCESS INDEX



Adoption and Equity Index Score by Population



Broadband Access Index Score by Population



Fixed Broadband Access by Population

