



SOUTHWESTERN PENNSYLVANIA COMMISSION

Two Chatham Center • Suite 500 • 112 Washington Place • Pittsburgh, PA 15219-3451

412-391-5590 phone • 412-391-9160 fax • www.spcregion.org

MEMORANDUM

To: Members, Southwestern Pennsylvania Commission

From: Vincent Valdes, Executive Director

Date: March 21, 2022

Subject: Commission Meeting Information – March 28, 2022 at 4:00 p.m.

Dear Commissioners:

The meeting will be held in Suite 400, Two Chatham Center, 112 Washington Place, Pittsburgh. In accordance with the most up-to-date COVID-19 developments and safety precautions, SPC will observe strict social distancing and safety protocols. SPC will continue to provide a virtual option using the Cisco WebEx platform for those wishing to attend online. Below you will find a link to join the meeting.

PLEASE NOTE: The same WebEx meeting link will be used for the Board/Executive Committee meeting at 3:00 p.m., and the Southwestern Pennsylvania Commission meeting at 4:00 p.m.

If you do not have access to a computer at the time of the meeting, you may call the telephone number shown below to participate.

Please join the meeting 15 minutes early to ensure the video and audio on your computer are working correctly and the meeting can start promptly at 4:00 p.m. **Please close all other applications on your computer** to reserve resources and ensure a smooth broadcast of the meeting.

The meeting agenda includes:

1. Call to Order
 - a. Quorum
 - b. Any Conflict of Interest Declarations on Action Items
2. Action on Minutes of the February 28th Meeting (Attached)
3. Public Comment
4. Financial Report – Margaret Fonner
5. Regional Connectivity Improvement Program Endorsement – Andy Waple
- Endorsement Resolution 1-22
6. Build Back Better Challenge Update – Jenn Lasser
7. Message from the Executive Director – Vincent Valdes
Next Meeting Date – **April 25, 2022, at 4:00 p.m.**

8. Other SPC Business

9. Adjourn

Please email jbedekovich@spcregion.org your response to let us know if you will attend the March 28th meeting in person (boxed lunches will be available) or by using the WebEx platform.

Attachment

Southwestern Pennsylvania Commission
Minutes of the Meeting
February 28, 2022 – 4:00 p.m.
Cisco Webex Meeting

The one hundred and fifty-third meeting of the Southwestern Pennsylvania Commission was called to order by Chairman Leslie Osche.

Members: Darin Alviano, Jennifer Beer, Mike Belding, Brad Berlin, Kevin Boozel, Scott Bricker, Tom Ceraso, Douglas Chew, Rich Fitzgerald, Ed Gainey, Shelia Gombita, Mark Gordon, Joe Grata, Kelly Gray, Sherene Hess, Mark Hilliard, Diana Irey Vaughan, Fred Junko, Katharine Kelleman, Sean Kertes, Clifford Levine, Larry Maggi, Jack Manning, Jeff Marshall, Betsy McClure, Kevin McCullough, Leslie Osche, Johnna Pro, Mavis Rainey, Aurora Sharrard, Nick Sherman, Byron Stauffer, Gina Cerilli Thrasher, John Timney, and Vince Vicites.

Others: Ann Ogoreuc, Allegheny County Economic Development; Jake Wheatley, Chief of Staff to Mayor Gainey, Barb Kipp, DCS Consulting, Jennifer Crobak, FHWA PA Division Office, Dusty Kirk, Legal Counsel to SPC, and 5 call-ins.

Staff: Kirk Brethauer, Ronda Craig, Dom D'Andrea, Linda Duffy, Margaret Fonner, Chuck Imbrogno, Steve Meredith, Shannon O'Connell, Ailisa Sobien, Vincent Valdes, Sara Walfoort, and Andy Waple.

1. Chairman Osche called to order the February 28, 2022 meeting of the Southwestern Pennsylvania Commission.

- a. Quorum – There being a quorum present the meeting proceeded.
- b. Any Conflict of Interest Declaration on Action Items – None

2. Action on Minutes of the January 31st Meeting.

A motion was made to approve the minutes of the January 31, 2022 meeting by Rich Fitzgerald which was seconded by Larry Maggi. The affirmative vote was unanimous.

3. Public Comment – None

4. Financial Report – Margaret Fonner

Margaret reported on the budget as of December 31, 2021. As of December 31, revenues and expenses were about \$5.9 million, which is about 42.8% of our budget of \$13.9 million. We're right on track where we need to be and expect no significant updates in the coming months. We will try to get an updated budget out for review for the next monthly meeting.

5. Presentation on the findings from our 2021 Federal Certification Review – Jenn Crobak, FHWA PA Division Office and Laura Keeley, FTA Region III

Jenn Crobak, Planning Program Manager for the Federal Highway Administration Pennsylvania Division Office, spoke about the federal transportation certification review process.

- FTA & FHWA are required to *review and certify* the planning practices within the SPC Transportation Management Area (TMA) to determine how the region follows federal laws and regulations
- TMAs are metropolitan areas with a population of 200,000 or more
- The review occurs once every 4 years
- FTA & FHWA jointly conduct the review

There are several steps to the review process.

- Desk Review
- Virtual site review with MPO staff, PennDOT Districts and Central Office Staff, and Transit Staff
- Public presentation at Joint Transportation Technical Committee/Transit Operators Meeting to gather feedback on planning process
- Develop Report and Present Findings

Summary of Findings

- Review found SPC's transportation process substantially meets Federal requirements
- FHWA and FTA certified the transportation planning process with:
 - ✓ 15 Commendations
 - ✓ 10 Recommendations
 - ✓ No Corrective Actions

Highlights:

❖ Multimodal Planning

Commendations:

- Data collection and analysis included in the design of the SmartMoves ArcGIS map with respect to the transit planning layer
- Serves to paint a picture of transit in the region, and makes clear that the intentional use of data will guide the future direction of transit development
- Development of the Regional Active Transportation Plan for Southwestern Pennsylvania
- Continued support of national, state, and local freight planning initiatives and activities
- Developing a stand-alone freight plan that integrates all transportation modes (truck, rail, air, water) in the region

❖ 3 C's of the Transportation Planning Process

The 3 Cs are the basis for metropolitan planning. MPOs are required to conduct the metropolitan planning process in a manner that is continuous, cooperative, and comprehensive, and provides for consideration and implementation of projects, strategies, and services.

Commendations:

- The 2019 MOU clearly explains the roles and responsibilities for each agency and satisfies the requirements of 23 CFR 450.314(h)

Recommendations:

- Develop standard operating procedures for how significant planning documents are developed and document how SPC's transportation planning committees' function, and interact
- Ensure that the region's strong planning practices can be carried forward into the future

❖ Transportation Improvement Program (TIP) & Long Range Transportation Plan (LRTP)

Commendations:

- SPC's collaborative TIP process
- Excellent visualization tools
- Early initiation of the 2023 TIP development process for Transit Projects and active role and responsibility for the transit portion of the Pittsburgh TIP
- Identification of needs for bridges and pavements to determine illustrative tradeoffs, and examine the funding gap throughout the life of the LRTP
- Development of a landslide susceptibility model

Recommendations:

- Recognize SPC and PennDOT Districts are still evaluating how to best incorporate BAMS/PAMS into their planning process
- Recommends PennDOT collaborate with Districts and MPOs to develop training and additional guidance on how to use BAMS/PAMS in the planning process

❖ Congestion Management and Operations

Commendations:

- Unique approach to the CMP which provides a comprehensive data platform to identify corridors of interest, track operational data and performance measures, and facilitate project selection and evaluation
- SPC's ROP balances the diverse input and needs of stakeholders in the region, across seven thematic priorities
- Regional Traffic Signal Program

Recommendations:

- Consider expanding CMP documentation and formalizing the process by which the CMP, as well as its component corridors and strategies change over time
- Consider introducing additional performance measure to its CMP which capture the impact of active mobility and transit usage

Discussion and Next Steps

- Meet with MPO and PennDOT staff to prioritize recommendations
- MPO to consider and integrate Recommendations into Work Program tasks
- FHWA/FTA and PennDOT provide technical assistance

Jenn took the moment to thank the Commission members for their time to share the findings and thanked SPC staff, PennDOT District 10, 11 and 12 staff, PennDOT Central Office staff and the staff of all the transit providers who participated in the certification review process. She explained that it's about a six month process that we've been working on over the last year and we really appreciate all partners' willingness to share their documents to come to the table to

talk through how they do planning in the region. And we really wanted to highlight the great work that's been done in the region right now and continue to carry those forward in the future.

Questions:

Leslie asked relating to the bridge and pavement asset tools, is that something that's already existing that we would just be incorporating into a process?

Jenn replied that yes, that is right. The Bridge and Pavement Asset Management Systems, BAMs and PAM's, are two different systems that PennDOT experts have developed. They look at different ways to incorporate transportation performance management, asset management approach to identifying the best projects to do at the best time to be able to achieve what we call lowest lifecycle costs. So, it's kind of investing at the right time to get the most out of our pavement and bridges. It's one of these new technical tools that PennDOT has developed and is being made available to our planning partners and the districts as well, to start to consider and to look at, in addition to the expertise that the PennDOT districts have, and PennDOT staff have to see how that could inform the planning process. These tools are in their early stages and are just now being incorporated to the process.

Kevin McCullough added that obviously there's a financial piece to that anytime you have financial changes or additions that can change your outputs. It's one of the tools that we use, and certainly when it regards to performance measures, which is now a federal requirement. SPC does a great job of utilizing that tool with our three engineering districts from a performance measure standpoint. You've heard us talk about safety, congestion, Bridge and Pavement Asset Management, those, again, are all fantastic tools to use. It's just another thing that helps us select the best bridges and roadways for the amount of money that we have. He also added that there is a transit investment tool as well. that does look at resources, and helps to select projects and assets on that side of the ledger.

Leslie then said you all may be familiar with this landslide susceptibility. Is that a tool as well or is there a modeling?

Andy Waple said we developed a tool on staff here. It's a GIS based tool that takes into account soil conditions and hydrology, and erosion and things like that. And it is basically a web map based tool that you can go in and take a look at where the most susceptible areas for landslides are across the region. It is for the 10-county region. It was developed based on a model that Minnesota DoD uses that was customized for our region. What we use it for is when we go in and look at candidate TIP projects. If there's a candidate project, or if there's a project in that area that's already planned or programmed on the TIP, we can go ahead and start discussions with the districts or the county or the city or whoever the roadway owner is or that and maybe employ some preventative measures, incorporating into the project that can help make it so that you can help to remediate landslides before they happen, essentially. We had tested for a while as you may recall the big landslide we had on Route 30 in eastern Allegheny County a few years ago. When we started to test this and looked at every case across the region, it lit up that area just almost perfectly right to where the slide occurred. And we've done it in a few areas across the region most of you are familiar with, where the part of the jig, the physic physiographic province in Appalachia that is most landslide susceptible, almost in the whole country. It's really this area from southwestern Pennsylvania, down through West Virginia, and into Kentucky and Tennessee. There's I think 250 or so active slides, as we speak, throughout

the region. Most of them are centered around PennDOT District 12 in Washington and Greene counties, and also PennDOT District 11. District 10 is affected to a lesser extent, but it's just another tool that we use in screening projects and looking for opportunities to remediate things before they happen.

6. Message from the Executive Director – Vincent Valdes

Vincent said he mentioned last month that the Department of Energy is interested in designating for hydrogen hubs around the US. The goal is to provide up to \$2 billion per region for creating a new energy sector cleaning up industrial production regionally, and generating new high paying jobs. He felt that part of his job is to raise the national awareness here for the benefit of our region. There have been a couple of developments since he last spoke about it. On February 15, DOE actually did issue a public request for information to gauge interest from the private and public sectors around the country in moving forward with the idea of hydrogen hubs, four of them nationally. What we know so far is that three regions have been identified as likely candidates based on their histories, on their current workforce, the potential for their future workforce, and importantly, the presence of raw materials. The three regions that have already been looked at are New Mexico, the area around Houston, Texas, and the tri state area of Pennsylvania, West Virginia and Ohio. At this point, there's probably not going to be an actual grant program coming out of DOD till late spring, maybe early summer, but SPC wants to start reaching out to potential partners like Pat Getty, at the Benedum Foundation to talk about what kind of regional tri state proposal would look like. It's really super important that we start marshaling our forces now. He and Jenn Lasser have been working on this, along with Sara Walfoort on staff. As new opportunities and new information develops, we'll certainly be reporting back to you all, so that we can again position ourselves as a region to take advantage of this exciting new proposition.

The second item he mentioned is SPC has been invited to participate in an Economic Development Roundtable to be convened by Senator Bob Casey on March 16 in Washington DC. It's going to be a three hour session. That's going to cover a few topics including a vision for Pennsylvania economic development over the next 10 years, how to implement the infrastructure bill to its best use, and how to link brownfield redevelopment with economic revitalization. Again, it's a very exciting proposition convened by the Senator and we'll brief the Commission on the results of this session at the next Commission meeting. He said he was very much looking forward to having SPC participate in that very important session.

The last piece he wanted to bring to everyone's attention is at the Executive Committee and the Board meeting, we briefed on the reorganization of the SPC. But in detail, we're setting up a new Directorate for policy, environmental issues, and grant writing. We're recruiting for a new director for that part of the organization. This person will be responsible for regional policy development, environmental work, grant writing, and kind of establishing the SPC radar permanently on a national level. If you know of any good candidates, please send them our way. We're looking for a dynamic person who really wants to take the bull by the horns here. It could be a very exciting position.

Next Meeting Date – March 28, 2022, at 4:00 p.m.

7. Other SPC Business – None

8. Adjourn

Respectfully Submitted,

Pat Fabian
Secretary-Treasurer

SOUTHWESTERN PENNSYLVANIA COMMISSION

RESOLUTION NO. 01-22

A RESOLUTION OF THE SOUTHWESTERN PENNSYLVANIA COMMISSION to endorse the regional Connectivity Improvement Program (CIP) for southwestern Pennsylvania.

WHEREAS, *SmartMoves for a Changing Region*, SPC's Long-Range Transportation and Development Plan identified the need for broadband connectivity as one of the region's most pressing issues; and

WHEREAS, in 2020, in collaboration with Carnegie Mellon University, Allies for Children and a broad coalition of stakeholders initiated the Southwestern Pennsylvania Connected Connectivity Improvement Program to equitably and systematically deploy high-speed connectivity programs and projects to enable the areas of the southwestern Pennsylvania region lacking adequate high-speed internet access and equipment to better connect to jobs, education, health care and to attract new business to all corners of the region; and

WHEREAS, this plan intends to act as a catalyst in proactively assisting the region to research, collect, develop and prioritize a pipeline of connectivity projects and initiatives in order to secure funding for implementation. The process will be equitable in its recommendations to represent all of the region's residents, with the ultimate goal of connecting the southwestern Pennsylvania region (the region) to the world; and

WHEREAS, this strategic plan examines the current, true state of the region's broadband connectivity in relation to the region's demographic and socioeconomic composition to ensure its recommendations help to equitably serve the region's most vulnerable populations who are unserved or underserved by current connectivity. It also examines the locations of schools, other educational institutions, medical facilities, businesses and planned business parks to ensure we are properly connecting our residents, students, as well as our medical and business community to the world; and

WHEREAS, High-speed connectivity should be viewed as an essential form of transportation in the 21st Century. The emergence of the COVID-19 virus over the past year has demonstrated to the world, the role and importance that high-speed connectivity currently and will continue to play in nearly every aspect of our lives. For the southwestern Pennsylvania region to be truly globally competitive, the unserved and underserved areas of the region must be addressed equitably and systematically.

NOW, THEREFORE, BE IT RESOLVED that the Southwestern Pennsylvania Commission hereby endorses the regional Connectivity Improvement Program and its recommendations to address the unserved and underserved areas of the region

I, Vince Vicites, HEREBY CERTIFY that I am Secretary-Treasurer of the SOUTHWESTERN PENNSYLVANIA COMMISSION; that the foregoing resolution was adopted, in accordance with the By-Laws, by the Members of said Commission at a meeting duly called and held on the 28th day of March 2022; and that said resolution is now in full force and effect.

IN TESTIMONY WHEREOF I hereto subscribe my name as _____

Southwestern Pennsylvania Commission

March 28, 2022



Opening Agenda Items

- Agenda Item: 1 - Call to Order
 - Quorum
 - Conflict of Interest Declarations on Action Items
- Agenda Item: 2 - Action on the Minutes of the February 28, 2022 Meeting
- Agenda Item: 3 - Public Comment: Opportunity for the public to address the Commission

Financial Report

Margaret Fonner

Agenda Item: 4



Financial Report

Budget Status – January 31, 2022

- FY21-22 Budget \$13,891,612
- Revenue and Expenses: \$7,163,900
- Percent of Budget: 51.7%

Regional Connectivity Improvement Program (CIP) Endorsement

Andy Waple

Agenda Item: 5





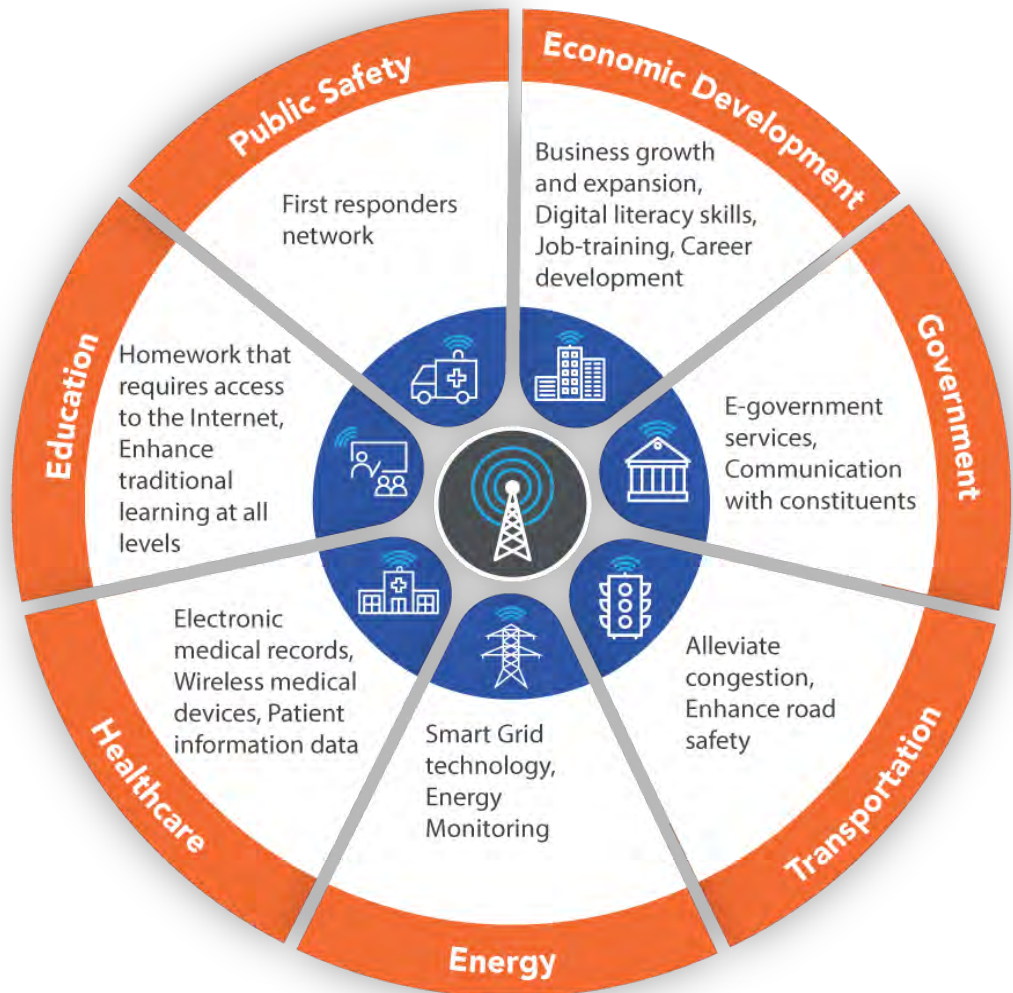
Southwestern Pennsylvania
Connected

Equitable Broadband Access

March 28, 2022, Commission Meeting



Why Does High-Speed Internet Access Matter?



Southwestern Pennsylvania Connectivity Roadmap

1. Overview

2. Current Status of the Region

3. SMART Goals

4. Identifying Opportunity Areas & Projects

5. Governance

6. Recommendations & Next Steps

SWPA Connectivity Roadmap - Overview

- A regional Connectivity Improvement Plan to deploy high-speed connectivity programs and projects.
- Plan to act as a catalyst in proactively assisting the region to collect, develop and prioritize a pipeline of connectivity projects and initiatives in order to secure funding for implementation.
- The COVID-19 virus has demonstrated to the world the role and importance that high-speed connectivity currently and will continue to play in nearly every aspect of our lives.
- For the southwestern Pennsylvania region to be truly globally competitive, the unserved and underserved areas of the region must be addressed equitably and systematically.

Project Team

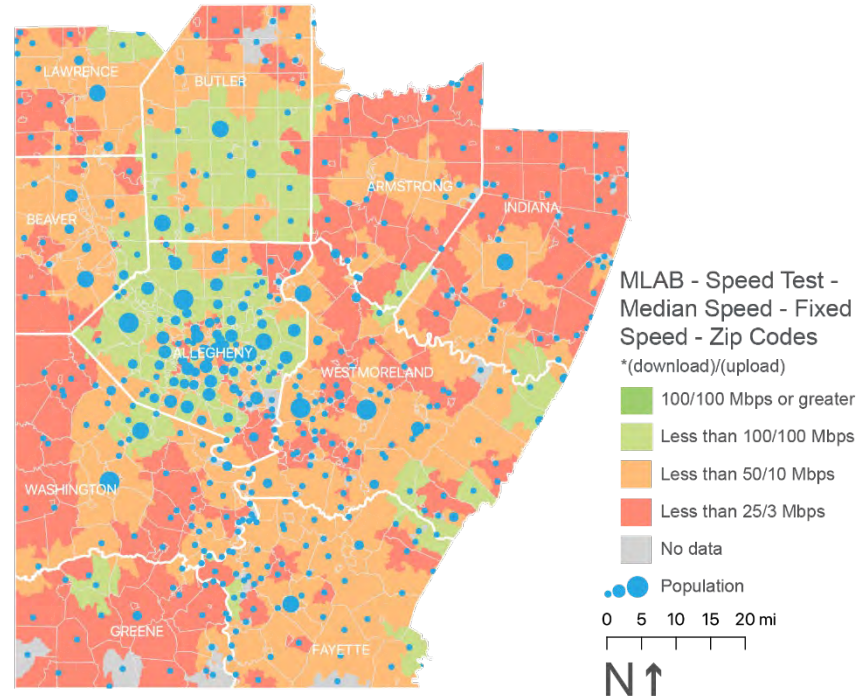


Current Status Overview

Most of the region falls short of the proposed 100/20 threshold for defining broadband

- To correct for the overstated conditions found in the Form 477 data, the actual measured speeds were mapped for the 10-county region.
- The areas of the region that have access to speeds meeting the 100 Mbps download/100 Mbps upload threshold are too small to be visible on the map.
- Download speeds between 50 and 99 Mbps are more common in Allegheny and Butler counties but are found only in small areas throughout the remaining eight counties.
- Additional broadband buildout is occurring in rural areas and mapping will need to be continually updated to reflect these actions.

Most of the southwestern Pennsylvania region has download speeds less than 50 Mbps (underserved) or less than 25 Mbps (unserved).



SMART Goals



Invest in Expanded Infrastructure and a Fiber Backbone



Provide Assistance to Achieve Affordable Rates



Expand Programs for Digital Literacy and Education



Support Industry Sectors i.e., Transportation & Agriculture



Reframe Internet as a Public Necessity



Foster Digital Inclusion and Access



Expand Broadband in the Public Domain



Facilitate and Lead Regional Partnerships



Prioritize Digital Equity for all Existing and Potential Users



Establish Network Redundancy



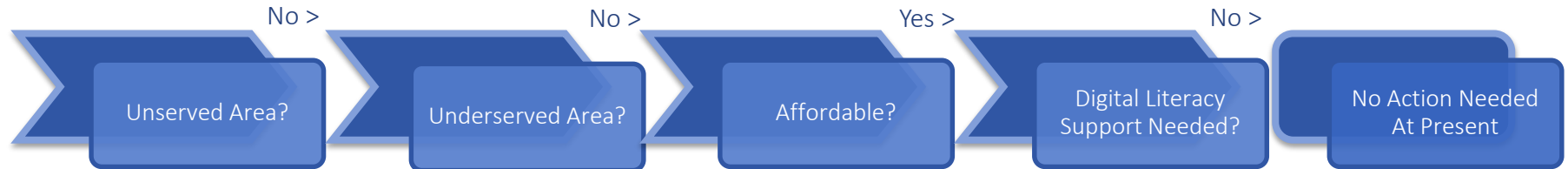
Advance Cross-Jurisdictional Policies and Legislative Change



Integrate Broadband Expansion into Economic Development Policies

Identifying Opportunity Areas & Projects

- The Broadband Access Index and the Adoption and Equity Index helped identify Connectivity Opportunity Areas (COAs).
- The Project Identification Decision Tree guides project identification through the steps needed to meet a given need, according to the existing conditions and type of need.
- The Measures of Effectiveness rate and weight projects according to an extensive set of metrics that include technical qualifications and equitable qualifications.



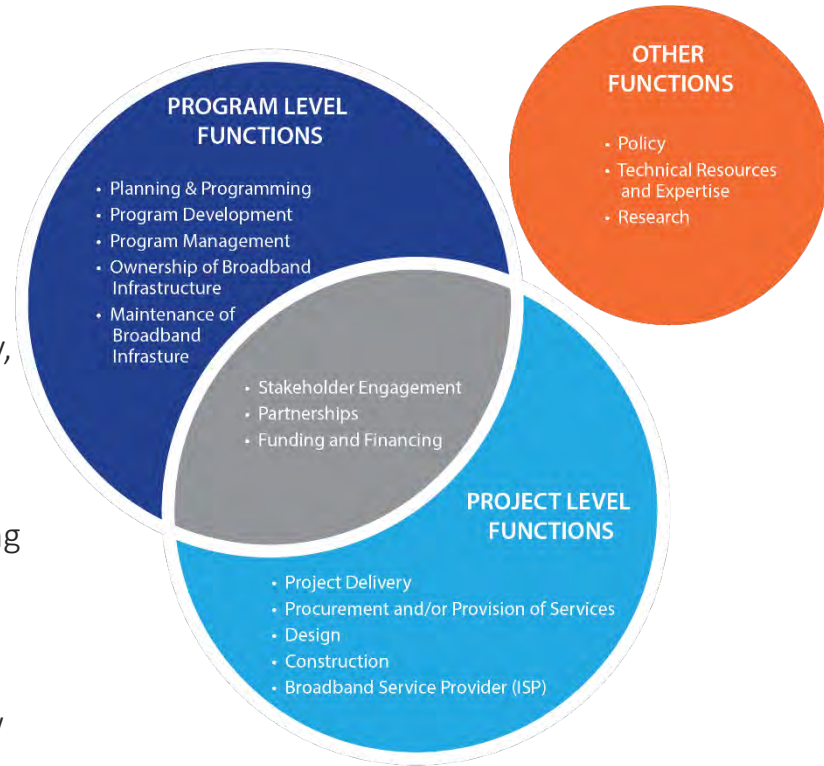
Regional Governance

Non-profit - Non-profit organizations are eligible to apply many of the federal programs that offer broadband funding, and with the exception of policymaking, are positioned to serve many of the same functions as a government entity.

Government - Government bodies, including joint bodies such as COGs, are well-situated for many broadband functions. Historically, municipal ventures into providing internet service have received pushback from major telecommunications companies.

Authority - As municipal authorities are restricted by law from projects that duplicate or compete with existing enterprises serving substantially the same powers. Thus, a municipal authority likely cannot pursue any projects that may be perceived as competing with an existing ISP.

Electric Cooperative - Rural electric co-ops were established by law in Pennsylvania in 1990 to provide electric service to unserved areas. Given the powers provided in Pennsylvania law, electric co-ops are existing entities that are well situated to provide regional broadband services.



Recommendations & Next Steps

Top Three Priority Action Recommendations by Group

Regional Efforts

- Select a governance structure to guide activities that best supports regional needs.
- Develop a regional marketing campaign to promote the benefits and highlight existing affordability programs.
- Select a regional pilot infrastructure project and identify partners to submit a grant application.

County and Municipal Leaders

- Participate in governance structure discussions to ensure that counties benefit from investments.
- Advocate to state representatives to ensure that local needs are understood and addressed.
- Develop streamlined permit processes for installation and operation of broadband infrastructure and provide best practices on developing beneficial local zoning code.

Private Sector and Nonprofit Partners

- Prioritize near-term expansion opportunities around existing facilities.
- Identify the goals and strategies that align with your mission and connect with SPC and/or county leadership to seek or become a partner in implementation.
- Set organization-level goals that commit to your role in implementing connectivity for all.



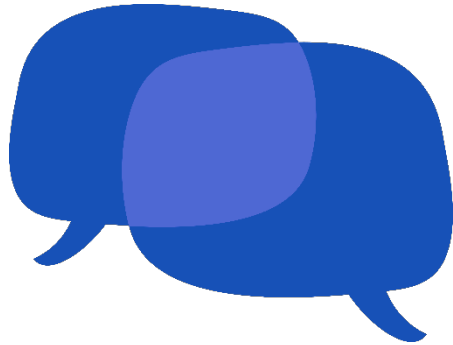
- Questions?
- Make a Motion
- Second the Motion
- Vote on Resolution 1-22

Build Back Better Challenge Update

Jenn Lasser

Agenda Item: 6





Questions?

Message from the Executive Director

Next Meeting Date – April 25, 2022 at 4:00 pm

Vincent Valdes

Agenda Item: 7



Other SPC Business

Leslie Osche

Agenda Item: 8



Adjourn

Leslie Osche

Agenda Item: 9

