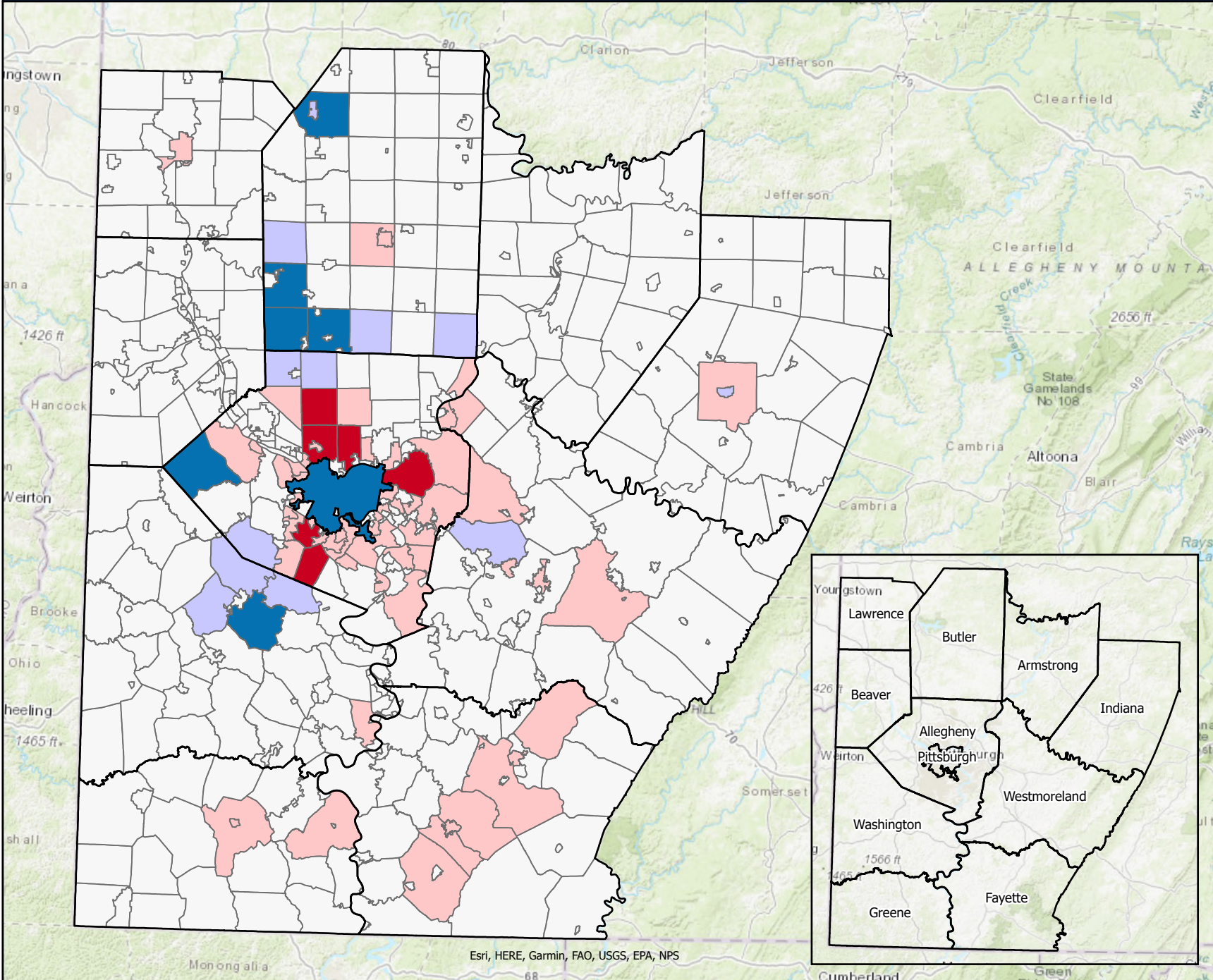


Population Change in the SPC Region, 2020-2025

Estimates of Resident Municipal Population July 1, 2020 to July 1, 2025



- Counties
- Population Change of Municipality
 - 1000 or Less
 - 999 to -250
 - 249 to 250
 - 251 to 1000
 - 1001 or More

The municipality with greatest negative change in the SPC Region (-1,499) is Penn Hills Township, located in Allegheny County.

The municipality with greatest positive change in the SPC Region (+4,773) is City of Pittsburgh, located in Allegheny County.

Estimates released by Census Bureau on May 14, 2026



5/19/2026

**Summary of Municipal Population Ten Largest and Smallest Numeric Change
in Each SPC County 2020-2025**

Numeric change rank within county	Municipality	Mid-Year Population		Numeric Change 2020-2025	Percent Change 2020-2025
		2020	2025		
130	Allegheny County				
	10 LARGEST NUMERIC CHANGE				
1	Pittsburgh city	302,859	307,632	4,773	1.58%
2	Findlay township	6,410	7,541	1,131	17.64%
3	Pine township	14,753	15,475	722	4.89%
4	Marshall township	10,155	10,499	344	3.39%
5	South Fayette township	18,349	18,648	299	1.63%
6	Robinson township	15,509	15,735	226	1.46%
7	Indiana township	7,251	7,420	169	2.33%
8	Collier township	8,947	9,103	156	1.74%
9	Ohio township	7,168	7,268	100	1.40%
10	Rankin borough	1,890	1,975	85	4.50%
	10 LOWEST NUMERIC CHANGE				
121	West Mifflin borough	19,568	18,707	-861	-4.40%
122	Plum borough	27,128	26,225	-903	-3.33%
123	Monroeville municipality	28,645	27,685	-960	-3.35%
124	Baldwin borough	21,490	20,516	-974	-4.53%
125	McCandless township	29,666	28,439	-1,227	-4.14%
126	Shaler township	28,087	26,833	-1,254	-4.46%
127	Ross township	33,544	32,218	-1,326	-3.95%
128	Mount Lebanon township	34,013	32,552	-1,461	-4.30%
129	Bethel Park municipality	33,545	32,074	-1,471	-4.39%
130	Penn Hills township	40,951	39,452	-1,499	-3.66%

45	Armstrong County				
	10 LARGEST NUMERIC CHANGE				
1	Kittanning borough	3,923	3,941	18	0.46%
2	Hovey township	74	71	-3	-4.05%
3	Atwood borough	108	104	-4	-3.70%
4	Perry township	367	362	-5	-1.36%
5	Cadogan township	332	320	-12	-3.61%
6	Elderton borough	334	322	-12	-3.59%
7	Pine township	359	347	-12	-3.34%
8	Manorville borough	377	364	-13	-3.45%
9	Applewold borough	338	324	-14	-4.14%
10	Ford Cliff borough	361	346	-15	-4.16%
	10 LOWEST NUMERIC CHANGE				
36	Freeport borough	1,738	1,672	-66	-3.80%
37	Cowanshannock township	2,727	2,656	-71	-2.60%
38	Gilpin township	2,405	2,333	-72	-2.99%
39	Leechburg borough	2,148	2,068	-80	-3.72%
40	North Buffalo township	2,691	2,611	-80	-2.97%
41	Parks township	2,469	2,388	-81	-3.28%
42	Kiskiminetas township	4,613	4,522	-91	-1.97%
43	Ford City borough	2,859	2,750	-109	-3.81%
44	East Franklin township	3,811	3,699	-112	-2.94%
45	Manor Township	4,194	4,068	-126	-3.00%

**Summary of Municipal Population Ten Largest and Smallest Numeric Change
in Each SPC County 2020-2025**

Numeric change rank within county	Municipality	Mid-Year Population		Numeric Change 2020-2025	Percent Change 2020-2025
		2020	2025		
54	Beaver County				
10 LARGEST NUMERIC CHANGE					
1	Center township	11,754	11,998	244	2.08%
2	Chippewa township	8,024	8,107	83	1.03%
3	Greene township	2,186	2,264	78	3.57%
4	Economy borough	9,056	9,098	42	0.46%
5	Brighton township	8,771	8,791	20	0.23%
6	Hanover township	3,340	3,357	17	0.51%
7	Potter township	518	524	6	1.16%
8	Glasgow borough	70	68	-2	-2.86%
9	Homewood borough	90	88	-2	-2.22%
10	Darlington borough	249	246	-3	-1.20%
10 LOWEST NUMERIC CHANGE					
45	Beaver borough	4,425	4,342	-83	-1.88%
46	Harmony township	3,157	3,071	-86	-2.72%
47	Baden borough	3,925	3,831	-94	-2.39%
48	Rochester borough	3,452	3,358	-94	-2.72%
49	New Sewickley township	7,153	7,038	-115	-1.61%
50	New Brighton borough	5,643	5,503	-140	-2.48%
51	Monaca borough	5,607	5,456	-151	-2.69%
52	Beaver Falls city	8,988	8,832	-156	-1.74%
53	Hopewell township	13,333	13,104	-229	-1.72%
54	Aliquippa city	9,240	9,002	-238	-2.58%

57	Butler County				
10 LARGEST NUMERIC CHANGE					
1	Cranberry township	33,171	35,244	2,073	6.25%
2	Slippery Rock township	6,692	8,349	1,657	24.76%
3	Jackson township	4,977	6,585	1,608	32.31%
4	Adams township	14,854	15,927	1,073	7.22%
5	Lancaster township	2,765	3,734	969	35.05%
6	Middlesex township	6,892	7,513	621	9.01%
7	Slippery Rock borough	3,183	3,551	368	11.56%
8	Buffalo township	7,923	8,214	291	3.67%
9	Forward township	3,196	3,412	216	6.76%
10	Valencia borough	542	681	139	25.65%
10 LOWEST NUMERIC CHANGE					
48	Evans City borough	1,746	1,670	-76	-4.35%
49	Clearfield township	2,436	2,358	-78	-3.20%
50	Connoquenessing township	4,257	4,151	-106	-2.49%
51	Center township	7,890	7,778	-112	-1.42%
52	Penn township	5,017	4,890	-127	-2.53%
53	Jefferson township	5,231	5,096	-135	-2.58%
54	Zelienople borough	3,912	3,752	-160	-4.09%
55	Summit township	4,486	4,308	-178	-3.97%
56	Butler township	17,207	16,902	-305	-1.77%
57	Butler city	13,484	12,879	-605	-4.49%

**Summary of Municipal Population Ten Largest and Smallest Numeric Change
in Each SPC County 2020-2025**

Numeric change rank within county	Municipality	Mid-Year Population		Numeric Change 2020-2025	Percent Change 2020-2025
		2020	2025		
43	Fayette County				
	10 LARGEST NUMERIC CHANGE				
1	Seven Springs borough	9	9	0	0.00%
2	Ohiopyle borough	38	36	-2	-5.26%
3	Markleysburg borough	241	234	-7	-2.90%
4	Stewart township	619	610	-9	-1.45%
5	Dawson borough	351	336	-15	-4.27%
6	Vanderbilt borough	412	395	-17	-4.13%
7	Newell borough	512	490	-22	-4.30%
8	Fayette City borough	499	476	-23	-4.61%
9	Brownsville township	535	511	-24	-4.49%
10	Everson borough	768	736	-32	-4.17%
	10 LOWEST NUMERIC CHANGE				
34	German township	4,682	4,483	-199	-4.25%
35	Washington township	3,880	3,659	-221	-5.70%
36	Redstone township	5,061	4,831	-230	-4.54%
37	Georges township	6,360	6,092	-268	-4.21%
38	Dunbar township	6,642	6,371	-271	-4.08%
39	Bullskin township	6,736	6,453	-283	-4.20%
40	Connellsville city	7,000	6,574	-426	-6.09%
41	North Union township	11,824	11,368	-456	-3.86%
42	Uniontown city	9,986	9,434	-552	-5.53%
43	South Union township	10,860	10,300	-560	-5.16%

26	Greene County				
	10 LARGEST NUMERIC CHANGE				
1	Greene township	397	391	-6	-1.51%
2	Gray township	182	172	-10	-5.49%
3	Clarksville borough	195	183	-12	-6.15%
4	Freeport township	267	255	-12	-4.49%
5	Jackson township	379	367	-12	-3.17%
6	Gilmore township	237	223	-14	-5.91%
7	Jefferson borough	254	239	-15	-5.91%
8	Wayne township	1,025	1,009	-16	-1.56%
9	Greensboro borough	266	248	-18	-6.77%
10	Aleppo township	423	404	-19	-4.49%
	10 LOWEST NUMERIC CHANGE				
17	Richhill township	769	730	-39	-5.07%
18	Center township	1,115	1,065	-50	-4.48%
19	Perry township	1,393	1,331	-62	-4.45%
20	Monongahela township	1,481	1,415	-66	-4.46%
21	Dunkard township	2,168	2,047	-121	-5.58%
22	Jefferson township	2,343	2,210	-133	-5.68%
23	Morgan township	2,328	2,187	-141	-6.06%
24	Cumberland township	6,372	6,066	-306	-4.80%
25	Waynesburg borough	3,990	3,631	-359	-9.00%
26	Franklin township	7,063	6,653	-410	-5.80%

**Summary of Municipal Population Ten Largest and Smallest Numeric Change
in Each SPC County 2020-2025**

Numeric change rank within county	Municipality	Mid-Year Population		Numeric Change 2020-2025	Percent Change 2020-2025
		2020	2025		
38	Indiana County				
	10 LARGEST NUMERIC CHANGE				
1	Indiana borough	14,021	14,697	676	4.82%
2	Smicksburg borough	55	54	-1	-1.82%
3	Armagh borough	101	99	-2	-1.98%
4	Shelocta borough	101	99	-2	-1.98%
5	Cherry Tree borough	274	271	-3	-1.09%
6	Brush Valley township	1,676	1,672	-4	-0.24%
7	Creekside borough	284	280	-4	-1.41%
8	Glen Campbell borough	254	250	-4	-1.57%
9	Marion Center borough	408	404	-4	-0.98%
10	Plumville borough	251	247	-4	-1.59%
	10 LOWEST NUMERIC CHANGE				
29	Homer City borough	1,728	1,708	-20	-1.16%
30	Cherryhill township	2,443	2,421	-22	-0.90%
31	West Wheatfield township	2,139	2,115	-24	-1.12%
32	East Wheatfield township	2,138	2,113	-25	-1.17%
33	Green township	3,414	3,388	-26	-0.76%
34	Blairsville borough	3,217	3,176	-41	-1.27%
35	Rayne township	2,780	2,738	-42	-1.51%
36	Burrell township	3,481	3,434	-47	-1.35%
37	Center township	4,382	4,330	-52	-1.19%
38	White township	15,338	14,933	-405	-2.64%

27	Lawrence County				
	10 LARGEST NUMERIC CHANGE				
1	S.N.P.J. borough	16	15	-1	-6.25%
2	Ellport borough	1,085	1,081	-4	-0.37%
3	Volant borough	127	123	-4	-3.15%
4	Enon Valley borough	306	301	-5	-1.63%
5	Washington township	707	697	-10	-1.41%
6	Hickory township	2,319	2,304	-15	-0.65%
7	New Wilmington borough	2,100	2,084	-16	-0.76%
8	Wampum borough	558	541	-17	-3.05%
9	North Beaver township	3,954	3,934	-20	-0.51%
10	South New Castle borough	655	635	-20	-3.05%
	10 LOWEST NUMERIC CHANGE				
18	Perry township	1,852	1,809	-43	-2.32%
19	Pulaski township	3,092	3,043	-49	-1.58%
20	Slippery Rock township	2,906	2,851	-55	-1.89%
21	Mahoning township	2,705	2,649	-56	-2.07%
22	Wayne township	2,469	2,404	-65	-2.63%
23	Union township	4,984	4,851	-133	-2.67%
24	Shenango township	7,112	6,960	-152	-2.14%
25	Ellwood City borough	7,006	6,774	-232	-3.31%
26	Neshannock township	9,836	9,599	-237	-2.41%
27	New Castle city	21,891	21,175	-716	-3.27%

**Summary of Municipal Population Ten Largest and Smallest Numeric Change
in Each SPC County 2020-2025**

Numeric change rank within county	Municipality	Mid-Year Population		Numeric Change 2020-2025	Percent Change 2020-2025
		2020	2025		
66	Washington County				
	10 LARGEST NUMERIC CHANGE				
1	North Strabane township	15,833	17,433	1,600	10.11%
2	Chartiers township	8,699	9,302	603	6.93%
3	Cecil township	14,642	15,190	548	3.74%
4	Peters township	22,968	23,262	294	1.28%
5	Washington city	13,131	13,377	246	1.87%
6	Nottingham township	2,856	3,065	209	7.32%
7	Union township	5,386	5,518	132	2.45%
8	Canton township	8,193	8,269	76	0.93%
9	Mount Pleasant township	3,299	3,351	52	1.58%
10	West Finley township	811	837	26	3.21%
	10 LOWEST NUMERIC CHANGE				
57	East Bethlehem township	2,289	2,238	-51	-2.23%
58	Centerville borough	3,275	3,223	-52	-1.59%
59	Fallowfield township	4,122	4,041	-81	-1.97%
60	Carroll township	5,371	5,274	-97	-1.81%
61	Monongahela city	4,138	4,041	-97	-2.34%
62	North Franklin township	4,823	4,726	-97	-2.01%
63	Charleroi borough	4,211	4,112	-99	-2.35%
64	Donora borough	4,564	4,462	-102	-2.23%
65	Canonsburg borough	9,718	9,529	-189	-1.94%
66	California borough	5,369	4,615	-754	-14.04%

65	Westmoreland County				
	10 LARGEST NUMERIC CHANGE				
1	Penn township	20,113	20,755	642	3.19%
2	Penn borough	435	610	175	40.23%
3	Rostraver township	11,381	11,455	74	0.65%
4	New Stanton borough	2,312	2,338	26	1.12%
5	Delmont borough	2,607	2,630	23	0.88%
6	Donegal borough	102	99	-3	-2.94%
7	Adamsburg borough	140	136	-4	-2.86%
8	Laurel Mountain borough	146	142	-4	-2.74%
9	Bell township	2,086	2,081	-5	-0.24%
10	Donegal township	2,194	2,187	-7	-0.32%
	10 LOWEST NUMERIC CHANGE				
56	Allegheny township	8,314	8,134	-180	-2.17%
57	Monessen city	6,863	6,657	-206	-3.00%
58	Latrobe borough	8,048	7,826	-222	-2.76%
59	Derry township	13,589	13,360	-229	-1.69%
60	Jeannette city	8,759	8,489	-270	-3.08%
61	Lower Burrell city	11,753	11,470	-283	-2.41%
62	Murrysville municipality	20,966	20,636	-330	-1.57%
63	New Kensington city	12,129	11,759	-370	-3.05%
64	Unity township	21,585	21,196	-389	-1.80%
65	Greensburg city	14,912	14,462	-450	-3.02%

Census Bureau 2020-2025 Total Population Estimates by County in the SPC Region

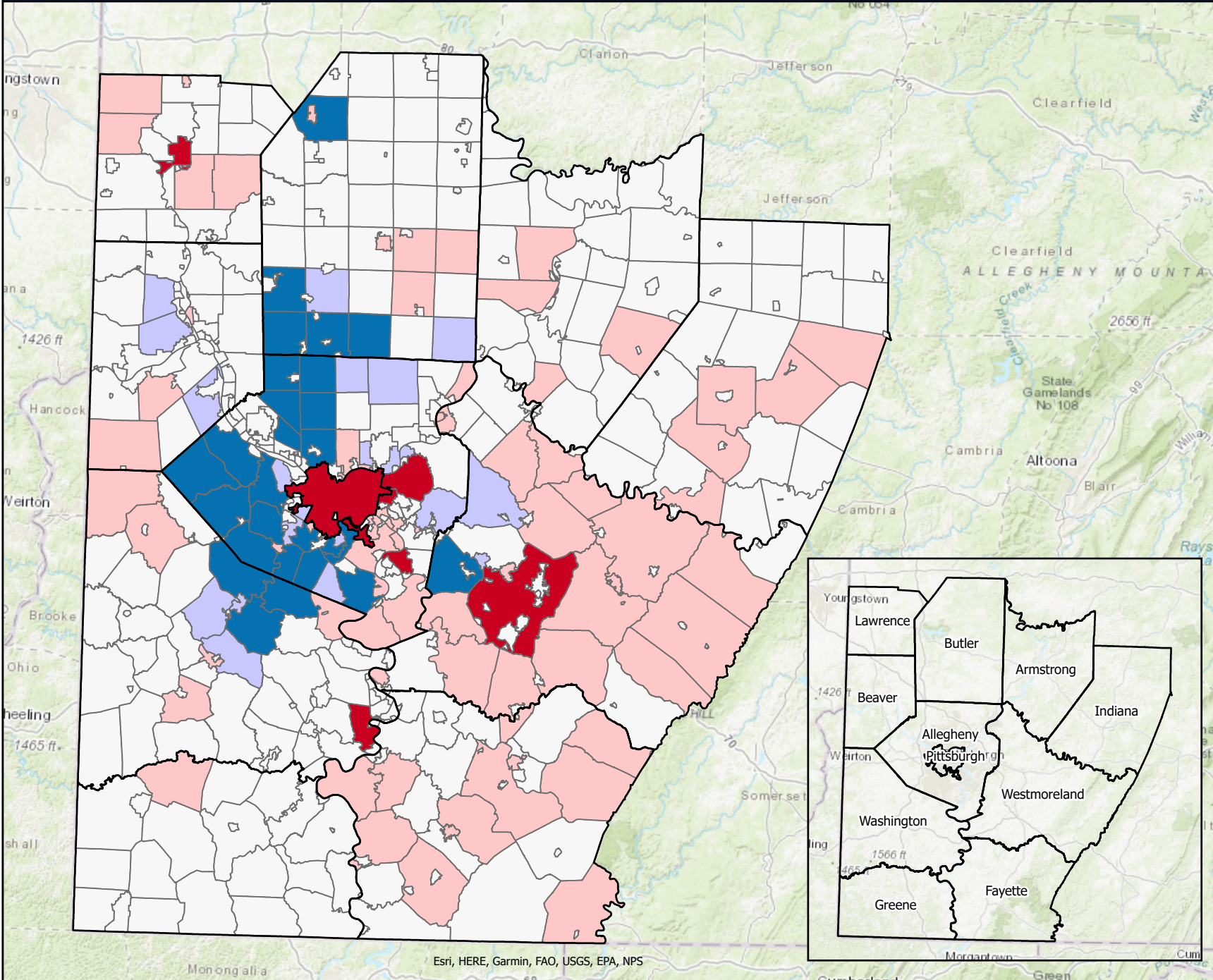
County/Pittsburgh	2020 Population Estimate	2021 Population Estimate	2022 Population Estimate	2023 Population Estimate	2024 Population Estimate	2025 Population Estimate	2026 Population Estimate	2027 Population Estimate	2028 Population Estimate	2029 Population Estimate	2030 Population Estimate	2020-2025 Population Change	2020-2025 Percent Change
Pittsburgh City	302,859	305,343	303,012	304,508	306,719	307,632						4,773	1.58%
Rest of Allegheny County	946,726	939,992	930,313	924,403	920,455	917,403						-29,323	-3.10%
Allegheny County	1,249,585	1,245,335	1,233,325	1,228,911	1,227,174	1,225,035						-24,550	-1.96%
Armstrong County	65,496	65,283	64,724	64,157	63,755	63,698						-1,798	-2.75%
Beaver County	167,857	166,976	165,703	165,680	165,769	166,032						-1,825	-1.09%
Butler County	194,026	196,738	197,374	198,657	199,300	200,169						6,143	3.17%
Fayette County	128,585	127,159	125,569	124,645	123,959	123,021						-5,564	-4.33%
Greene County	35,869	35,297	34,565	34,579	34,142	33,885						-1,984	-5.53%
Indiana County	83,158	83,115	82,893	83,045	83,257	82,878						-280	-0.34%
Lawrence County	85,961	85,550	84,771	84,500	84,087	83,911						-2,050	-2.38%
Washington County	209,413	210,116	209,981	210,442	210,635	210,802						1,389	0.66%
Westmoreland County	354,270	353,695	351,924	351,233	350,473	349,324						-4,946	-1.40%
SPC Region	2,574,220	2,569,264	2,550,829	2,545,849	2,542,551	2,538,755						-35,465	-1.38%
Pennsylvania	12,995,576	13,016,628	12,984,655	13,009,406	13,045,848	13,059,432						63,856	0.49%

The Census Bureau estimates the 2020-2030 data based on the 2020 Decennial Census.

Source: Annual Estimates of the Resident Municipal Population July 1, 2020 to July 1, 2025 (based on April 1, 2020 Decennial Population Count), released by the Census Bureau on May 14, 2026

Population Change in the SPC Region, 2010-2020

Estimates of the Resident Municipal Population July 1, 2010 to July 1, 2020



- Counties
- Population Change by Municipality
- 1000 or Less
- 999 to -250
- 249 to 250
- 251 to 1000
- 1001 or More

The municipality with greatest negative change in the SPC Region (-2,352) is City of Pittsburgh, located in Allegheny County.

The municipality with greatest positive change in the SPC Region (+4,994) is Cranberry Township, located in Butler County.

Estimates released by Census Bureau on November 8, 2024



**Summary of Municipal Population Ten Largest and Smallest Numeric Change
in Each SPC County 2010-2020**

Numeric change rank within county	Municipality	Mid-Year Population		Numeric Change 2010-2020	Percent Change 2010-2020
		2010	2020		
130	Allegheny County				
	10 LARGEST NUMERIC CHANGE				
1	South Fayette township	14,477	18,347	3,870	26.73%
2	Pine township	11,536	14,691	3,155	27.35%
3	Marshall township	6,948	10,081	3,133	45.09%
4	Moon township	24,289	27,244	2,955	12.17%
5	Ross township	31,184	33,558	2,374	7.61%
6	Ohio township	4,856	7,180	2,324	47.86%
7	North Fayette township	14,001	16,167	2,166	15.47%
8	Robinson township	13,415	15,499	2,084	15.53%
9	Franklin Park borough	13,559	15,481	1,922	14.18%
10	Collier township	7,151	8,936	1,785	24.96%
	10 LOWEST NUMERIC CHANGE				
121	Braddock borough	2,163	1,719	-444	-20.53%
122	North Braddock borough	4,851	4,318	-533	-10.99%
123	Munhall borough	11,375	10,782	-593	-5.21%
124	Shaler township	28,723	28,128	-595	-2.07%
125	Clairton city	6,789	6,184	-605	-8.91%
126	West Mifflin borough	20,308	19,593	-715	-3.52%
127	Penn Hills township	42,394	41,061	-1,333	-3.14%
128	Wilkinsburg borough	15,836	14,351	-1,485	-9.38%
129	McKeesport city	19,698	17,737	-1,961	-9.96%
130	Pittsburgh city	305,434	302,954	-2,480	-0.81%

45	Armstrong County				
	10 LARGEST NUMERIC CHANGE				
1	Wayne township	1,195	1,296	101	8.45%
2	South Buffalo township	2,680	2,710	30	1.12%
3	Applewold borough	310	338	28	9.03%
4	West Kittanning borough	1,176	1,191	15	1.28%
5	Perry township	353	367	14	3.97%
6	Bradys Bend township	771	783	12	1.56%
7	South Bethlehem borough	481	488	7	1.46%
8	Atwood borough	107	110	3	2.80%
9	Madison township	820	822	2	0.24%
10	Dayton borough	553	553	0	0.00%
	10 LOWEST NUMERIC CHANGE				
36	Cowanshannock township	2,900	2,740	-160	-5.52%
37	South Bend township	1,173	1,011	-162	-13.81%
38	Gilpin township	2,576	2,412	-164	-6.37%
39	Sugarcreek township	1,536	1,350	-186	-12.11%
40	Kiskiminetas township	4,818	4,602	-216	-4.48%
41	Kittanning township	2,264	2,029	-235	-10.38%
42	East Franklin township	4,063	3,815	-248	-6.10%
43	Parks township	2,737	2,472	-265	-9.68%
44	Plumcreek township	2,377	2,107	-270	-11.36%
45	North Buffalo township	3,015	2,695	-320	-10.61%

**Summary of Municipal Population Ten Largest and Smallest Numeric Change
in Each SPC County 2010-2020**

Numeric change rank within county	Municipality	Mid-Year Population		Numeric Change 2010-2020	Percent Change 2010-2020
		2010	2020		
54	Beaver County				
	10 LARGEST NUMERIC CHANGE				
1	Hopewell township	12,651	13,496	845	6.68%
2	Brighton township	8,251	8,792	541	6.56%
3	Chippewa township	7,644	8,042	398	5.21%
4	Patterson township	3,030	3,127	97	3.20%
5	Economy borough	9,010	9,097	87	0.97%
6	Bridgewater borough	707	743	36	5.09%
7	Georgetown borough	173	205	32	18.50%
8	Glasgow borough	60	71	11	18.33%
9	North Sewickley township	5,491	5,500	9	0.16%
10	Patterson Heights borough	634	638	4	0.63%
	10 LOWEST NUMERIC CHANGE				
45	Rochester borough	3,661	3,478	-183	-5.00%
46	Aliquippa city	9,436	9,245	-191	-2.02%
47	Midland borough	2,635	2,434	-201	-7.63%
48	New Sewickley township	7,383	7,179	-204	-2.76%
49	Independence township	2,456	2,247	-209	-8.51%
50	Pulaski township	1,505	1,293	-212	-14.09%
51	Baden borough	4,130	3,903	-227	-5.50%
52	Raccoon township	3,067	2,791	-276	-9.00%
53	New Brighton borough	6,023	5,733	-290	-4.81%
54	Hanover township	3,741	3,343	-398	-10.64%

57	Butler County				
	10 LARGEST NUMERIC CHANGE				
1	Cranberry township	28,173	33,083	4,910	17.43%
2	Adams township	11,701	14,841	3,140	26.84%
3	Middlesex township	5,416	6,824	1,408	26.00%
4	Jackson township	3,694	4,885	1,191	32.24%
5	Slippery Rock township	5,650	6,805	1,155	20.44%
6	Forward township	2,546	3,164	618	24.27%
7	Buffalo township	7,339	7,903	564	7.68%
8	Lancaster township	2,534	2,746	212	8.37%
9	Connoquenessing borough	526	667	141	26.81%
10	Zelienople borough	3,820	3,909	89	2.33%
	10 LOWEST NUMERIC CHANGE				
48	Winfield township	3,490	3,362	-128	-3.67%
49	Fairview township	2,083	1,940	-143	-6.87%
50	Clay township	2,702	2,549	-153	-5.66%
51	Oakland township	2,987	2,775	-212	-7.10%
52	Mars borough	1,695	1,461	-234	-13.81%
53	Clearfield township	2,684	2,425	-259	-9.65%
54	Butler city	13,771	13,495	-276	-2.00%
55	Jefferson township	5,510	5,210	-300	-5.44%
56	Summit township	4,854	4,508	-346	-7.13%
57	Slippery Rock borough	3,632	3,081	-551	-15.17%

**Summary of Municipal Population Ten Largest and Smallest Numeric Change
in Each SPC County 2010-2020**

Numeric change rank within county	Municipality	Mid-Year Population		Numeric Change 2010-2020	Percent Change 2010-2020
		2010	2020		
43	Fayette County				
10 LARGEST NUMERIC CHANGE					
1	South Union township	10,706	10,896	190	1.77%
2	Jefferson township	2,006	2,008	2	0.10%
3	Seven Springs borough	13	11	-2	-15.38%
4	Washington township	3,899	3,894	-5	-0.13%
5	Newell borough	524	513	-11	-2.10%
6	Dawson borough	366	353	-13	-3.55%
7	Point Marion borough	1,167	1,153	-14	-1.20%
8	Dunbar borough	1,032	1,014	-18	-1.74%
9	Ohiopyle borough	62	39	-23	-37.10%
10	Everson borough	791	767	-24	-3.03%
10 LOWEST NUMERIC CHANGE					
34	Upper Tyrone township	2,066	1,770	-296	-14.33%
35	Springfield township	3,035	2,731	-304	-10.02%
36	Uniontown city	10,345	9,983	-362	-3.50%
37	Luzerne township	5,951	5,587	-364	-6.12%
38	German township	5,055	4,670	-385	-7.62%
39	Saltlick township	3,437	3,042	-395	-11.49%
40	Dunbar township	7,122	6,671	-451	-6.33%
41	Redstone township	5,569	5,077	-492	-8.83%
42	Connellsville city	7,737	7,031	-706	-9.12%
43	North Union township	12,719	11,830	-889	-6.99%

26	Greene County				
10 LARGEST NUMERIC CHANGE					
1	Greensboro borough	258	265	7	2.71%
2	Jefferson township	2,354	2,352	-2	-0.08%
3	Jefferson borough	271	253	-18	-6.64%
4	Freeport township	296	268	-28	-9.46%
5	Springhill township	351	322	-29	-8.26%
6	Rices Landing borough	456	425	-31	-6.80%
7	Clarksville borough	228	194	-34	-14.91%
8	Gilmore township	272	238	-34	-12.50%
9	Gray township	218	182	-36	-16.51%
10	Carmichaels borough	478	433	-45	-9.41%
10 LOWEST NUMERIC CHANGE					
17	Richhill township	899	774	-125	-13.90%
18	Center township	1,267	1,115	-152	-12.00%
19	Washington township	1,091	933	-158	-14.48%
20	Wayne township	1,188	1,019	-169	-14.23%
21	Waynesburg borough	4,199	4,007	-192	-4.57%
22	Franklin township	7,258	7,055	-203	-2.80%
23	Dunkard township	2,380	2,176	-204	-8.57%
24	Morgan township	2,574	2,341	-233	-9.05%
25	Cumberland township	6,622	6,382	-240	-3.62%
26	Morris township	813	564	-249	-30.63%

**Summary of Municipal Population Ten Largest and Smallest Numeric Change
in Each SPC County 2010-2020**

Numeric change rank within county	Municipality	Mid-Year Population		Numeric Change 2010-2020	Percent Change 2010-2020
		2010	2020		
38	Indiana County				
10 LARGEST NUMERIC CHANGE					
1	Indiana borough	13,986	14,044	58	0.41%
2	Homer City borough	1,710	1,727	17	0.99%
3	Glen Campbell borough	246	256	10	4.07%
4	Smicksburg borough	46	56	10	21.74%
5	Armagh borough	122	102	-20	-16.39%
6	South Mahoning township	1,844	1,821	-23	-1.25%
7	Creekside borough	309	285	-24	-7.77%
8	Shelocta borough	126	100	-26	-20.63%
9	West Mahoning township	1,358	1,324	-34	-2.50%
10	Clymer borough	1,358	1,320	-38	-2.80%
10 LOWEST NUMERIC CHANGE					
29	Blairsville borough	3,402	3,213	-189	-5.56%
30	Rayne township	2,992	2,785	-207	-6.92%
31	East Wheatfield township	2,361	2,138	-223	-9.45%
32	Conemaugh township	2,295	2,060	-235	-10.24%
33	Armstrong township	3,006	2,764	-242	-8.05%
34	Cherryhill township	2,759	2,448	-311	-11.27%
35	Center township	4,764	4,393	-371	-7.79%
36	Green township	3,843	3,417	-426	-11.09%
37	White township	15,841	15,338	-503	-3.18%
38	Burrell township	4,383	3,490	-893	-20.37%

27	Lawrence County				
10 LARGEST NUMERIC CHANGE					
1	Neshannock township	9,630	9,843	213	2.21%
2	S.N.P.J. borough	19	17	-2	-10.53%
3	Enon Valley borough	307	301	-6	-1.95%
4	Plain Grove township	801	777	-24	-3.00%
5	Bessemer borough	1,108	1,074	-34	-3.07%
6	Volant borough	164	127	-37	-22.56%
7	Taylor township	1,045	991	-54	-5.17%
8	Wilmington township	2,718	2,662	-56	-2.06%
9	South New Castle borough	713	649	-64	-8.98%
10	Washington township	796	711	-85	-10.68%
10 LOWEST NUMERIC CHANGE					
18	Little Beaver township	1,404	1,228	-176	-12.54%
19	Union township	5,182	4,992	-190	-3.67%
20	Ellwood City borough	7,221	7,029	-192	-2.66%
21	Wayne township	2,696	2,468	-228	-8.46%
22	Shenango township	7,469	7,134	-335	-4.49%
23	Pulaski township	3,440	3,096	-344	-10.00%
24	Slippery Rock township	3,266	2,913	-353	-10.81%
25	Mahoning township	3,073	2,708	-365	-11.88%
26	New Wilmington borough	2,460	2,092	-368	-14.96%
27	New Castle city	23,254	21,930	-1,324	-5.69%

**Summary of Municipal Population Ten Largest and Smallest Numeric Change
in Each SPC County 2010-2020**

Numeric change rank within county	Municipality	Mid-Year Population		Numeric Change 2010-2020	Percent Change 2010-2020
		2010	2020		
66	Washington County				
	10 LARGEST NUMERIC CHANGE				
1	Cecil township	11,366	14,613	3,247	28.57%
2	North Strabane township	13,462	15,701	2,239	16.63%
3	Peters township	21,247	22,939	1,692	7.96%
4	Chartiers township	7,851	8,632	781	9.95%
5	Canonsburg borough	9,040	9,744	704	7.79%
6	South Strabane township	9,332	9,615	283	3.03%
7	North Franklin township	4,592	4,827	235	5.12%
8	Charleroi borough	4,103	4,242	139	3.39%
9	Burgettstown borough	1,385	1,426	41	2.96%
10	Deemston borough	719	753	34	4.73%
	10 LOWEST NUMERIC CHANGE				
57	Robinson township	1,930	1,706	-224	-11.61%
58	Bentleyville borough	2,577	2,349	-228	-8.85%
59	Fallowfield township	4,339	4,103	-236	-5.44%
60	Carroll township	5,621	5,381	-240	-4.27%
61	Hanover township	2,667	2,421	-246	-9.22%
62	Smith township	4,485	4,228	-257	-5.73%
63	Union township	5,770	5,378	-392	-6.79%
64	South Franklin township	3,303	2,869	-434	-13.14%
65	Washington city	14,024	13,180	-844	-6.02%
66	California borough	6,761	5,364	-1,397	-20.66%

65	Westmoreland County				
	10 LARGEST NUMERIC CHANGE				
1	North Huntingdon township	30,674	31,881	1,207	3.93%
2	Murrysville municipality	20,104	21,012	908	4.52%
3	Manor borough	3,209	3,586	377	11.75%
4	New Stanton borough	2,186	2,333	147	6.72%
5	Allegheny township	8,195	8,331	136	1.66%
6	Trafford borough	3,125	3,226	101	3.23%
7	Greensburg city	14,906	14,979	73	0.49%
8	Scottdale borough	4,364	4,428	64	1.47%
9	Southwest Greensburg borough	2,158	2,222	64	2.97%
10	Rostraver township	11,353	11,394	41	0.36%
	10 LOWEST NUMERIC CHANGE				
56	Washington township	7,362	6,884	-478	-6.49%
57	Salem township	6,618	6,096	-522	-7.89%
58	Ligonier township	6,601	6,061	-540	-8.18%
59	Mount Pleasant township	10,916	10,119	-797	-7.30%
60	Monessen city	7,702	6,877	-825	-10.71%
61	Derry township	14,497	13,626	-871	-6.01%
62	Jeannette city	9,660	8,782	-878	-9.09%
63	New Kensington city	13,104	12,178	-926	-7.07%
64	Unity township	22,603	21,608	-995	-4.40%
65	Hempfield township	43,262	41,448	-1,814	-4.19%

Census Bureau 2010-2020 Total Population Estimates by County in the SPC Region

County/Pittsburgh	2010 Population Estimate	2011 Population Estimate	2012 Population Estimate	2013 Population Estimate	2014 Population Estimate	2015 Population Estimate	2016 Population Estimate	2017 Population Estimate	2018 Population Estimate	2019 Population Estimate	2020 Population Estimate	2010-2020 Population Change	2010-2020 Percent Change
Pittsburgh City	305,434	306,534	307,207	308,092	307,501	305,979	306,879	304,029	303,426	303,148	302,954	-2,480	-0.81%
Rest of Allegheny County	919,471	926,574	932,341	938,065	941,813	942,998	943,398	943,516	944,943	947,168	947,616	28,145	3.06%
Allegheny County	1,224,905	1,233,108	1,239,548	1,246,157	1,249,314	1,248,977	1,250,277	1,247,545	1,248,369	1,250,316	1,250,570	25,665	2.10%
Armstrong County	69,059	68,812	68,495	68,408	68,145	67,547	67,220	66,918	66,409	65,817	65,557	-3,502	-5.07%
Beaver County	170,759	170,977	171,256	171,453	171,234	171,029	170,164	169,533	168,941	168,746	168,221	-2,538	-1.49%
Butler County	184,203	185,358	186,084	186,728	187,891	188,538	189,394	190,525	191,947	192,703	193,777	9,574	5.20%
Fayette County	136,439	136,045	135,351	134,708	134,136	133,430	132,559	131,558	130,700	129,700	128,806	-7,633	-5.59%
Greene County	38,621	38,403	38,095	37,947	37,869	37,541	37,352	37,026	36,811	36,254	35,956	-2,665	-6.90%
Indiana County	88,850	88,570	88,118	87,997	87,222	86,508	84,896	84,406	84,120	83,508	83,245	-5,605	-6.31%
Lawrence County	91,037	90,628	90,080	89,540	89,016	88,584	87,891	87,202	86,840	86,261	86,052	-4,985	-5.48%
Washington County	208,005	208,396	208,904	208,916	209,095	209,115	209,006	208,935	209,143	209,141	209,354	1,349	0.65%
Westmoreland County	365,202	365,319	364,392	362,983	361,889	360,660	359,115	357,200	356,344	355,381	354,685	-10,517	-2.88%
SPC Region	2,577,080	2,585,616	2,590,323	2,594,837	2,595,811	2,591,929	2,587,874	2,580,848	2,579,624	2,577,827	2,576,223	-857	-0.03%
Pennsylvania	12,716,596	12,773,059	12,816,003	12,847,236	12,880,907	12,899,169	12,918,673	12,945,701	12,980,946	12,991,539	13,002,744	286,148	2.25%

The Census Bureau 2010-2020 intercensal estimates are produced by modifying 2010-2020 postcensal annual estimates according to the difference between the 2020 Annual Estimate and the 2020 Decennial Count.

Source: Intercensal Estimates of the Resident Municipal Population July 1, 2010 to July 1, 2020 (based on April 1, 2010 Decennial Population Count), released by the Census Bureau on November 8, 2024.