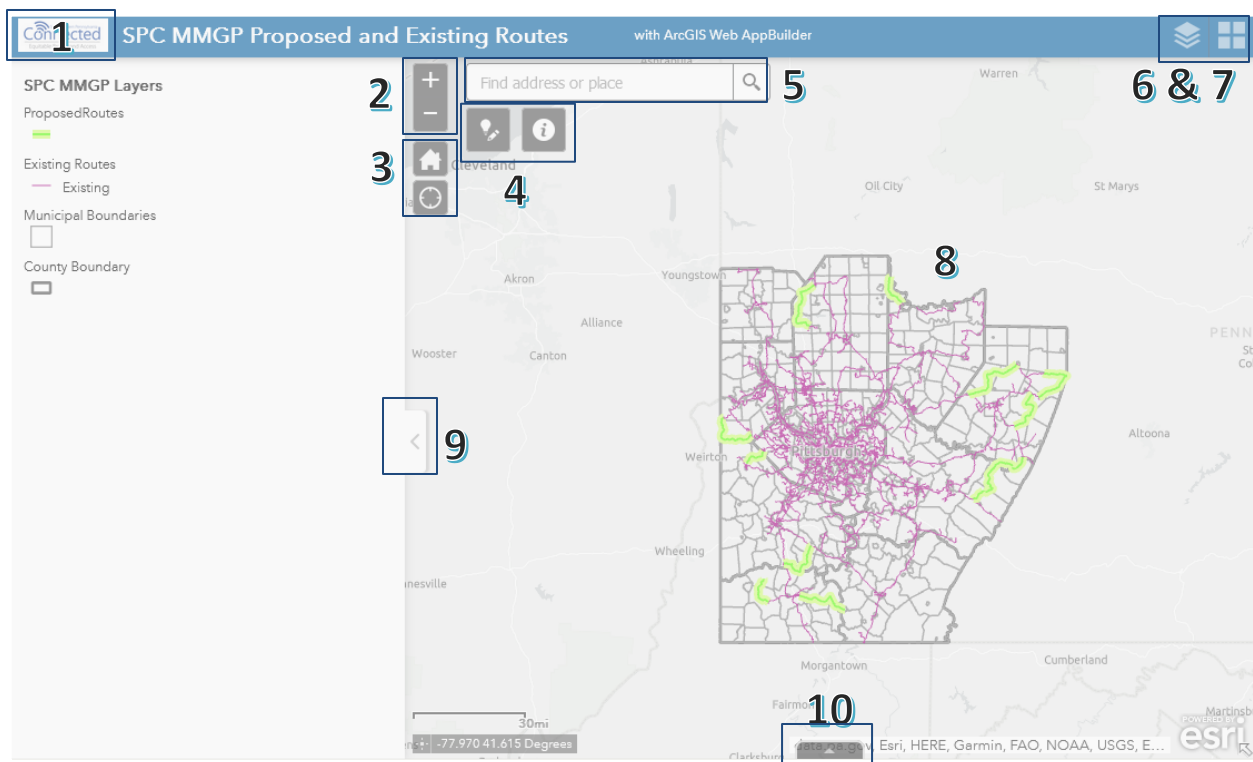


# Quick-Start Guide

## for the SPC Middle Mile Broadband Infrastructure Grant Program (MMGP) Interactive Map

The [Middle-Mile Route Locations Map](#) is an interactive web-mapping application for viewing and querying local and region-wide components of the SPC Middle Mile Grant application's geospatial data.

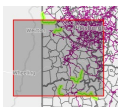
### Application Overview:



View numbered item descriptions on the following pages.

To interact with the map:

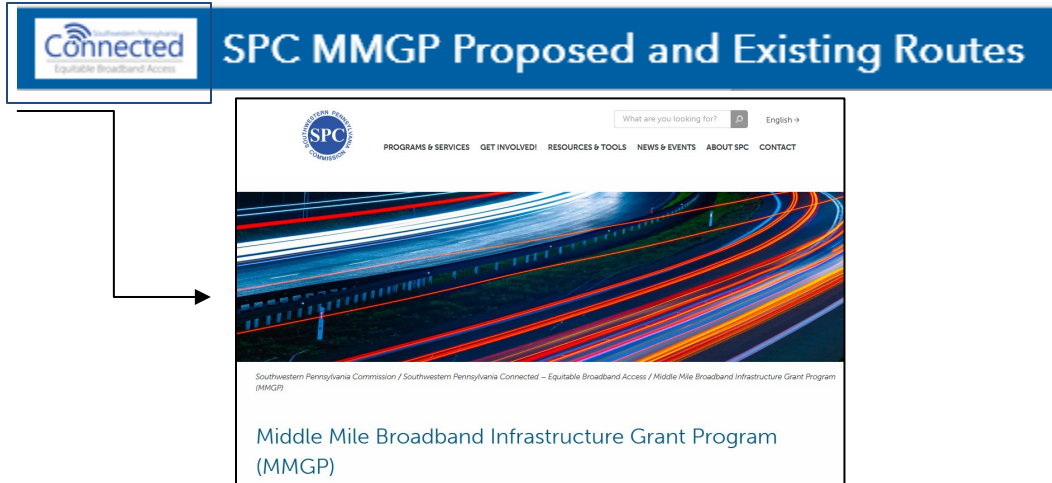
- Click and hold the left mouse button while moving to a desired location on the map.
- Use the scroll wheel to zoom in or out on the map.
- While pressing the *Shift* key, use the mouse to draw a rectangle around an area of interest:



The map will then zoom in to your area of interest as shown inside the red rectangle.

## 1) SPC Connected Logo

Clicking on the *Connected* logo will return you to the *SPC Connected* program's Middle Mile website.



## 2) Zoom in “+” and Zoom out “-“ buttons

These tools will zoom the map IN or OUT by a fixed distance.

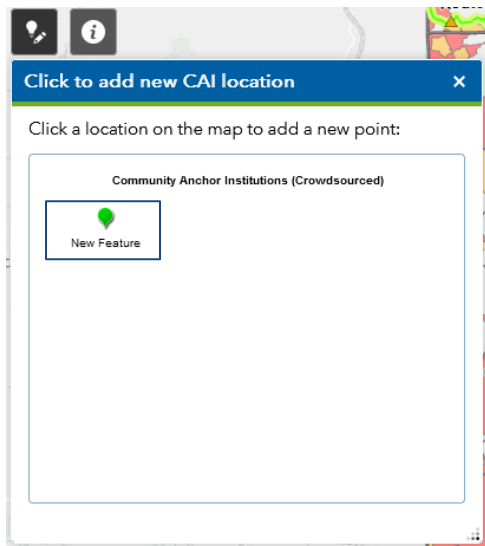
## 3) “Home” and “Find my location” buttons

The “home” icon will return the map to the default extent set for the web mapping application, i.e. to a view of the 10-county SPC region.

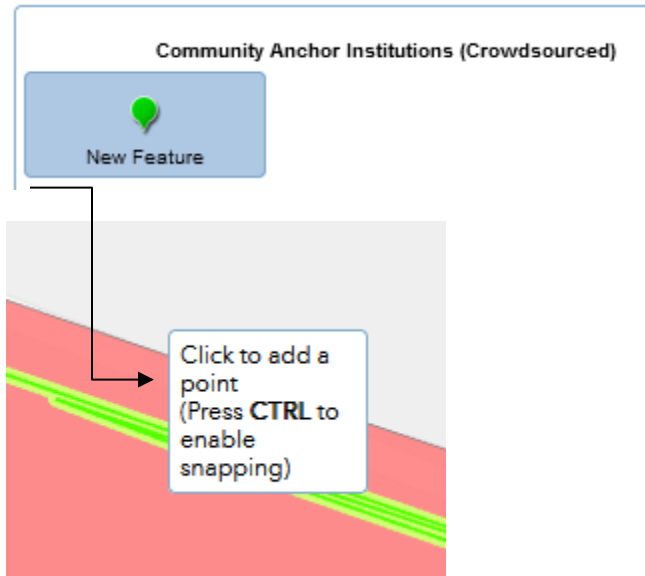
The “find my location” tool will allow mobile device users to zoom to their currently-detected location when location services/GPS are turned ON for that device.

## 4) “Click to add a new CAI location” and “Information” buttons

Users can click the “Click to add a new CAI location” button to launch the following interactive map tool:

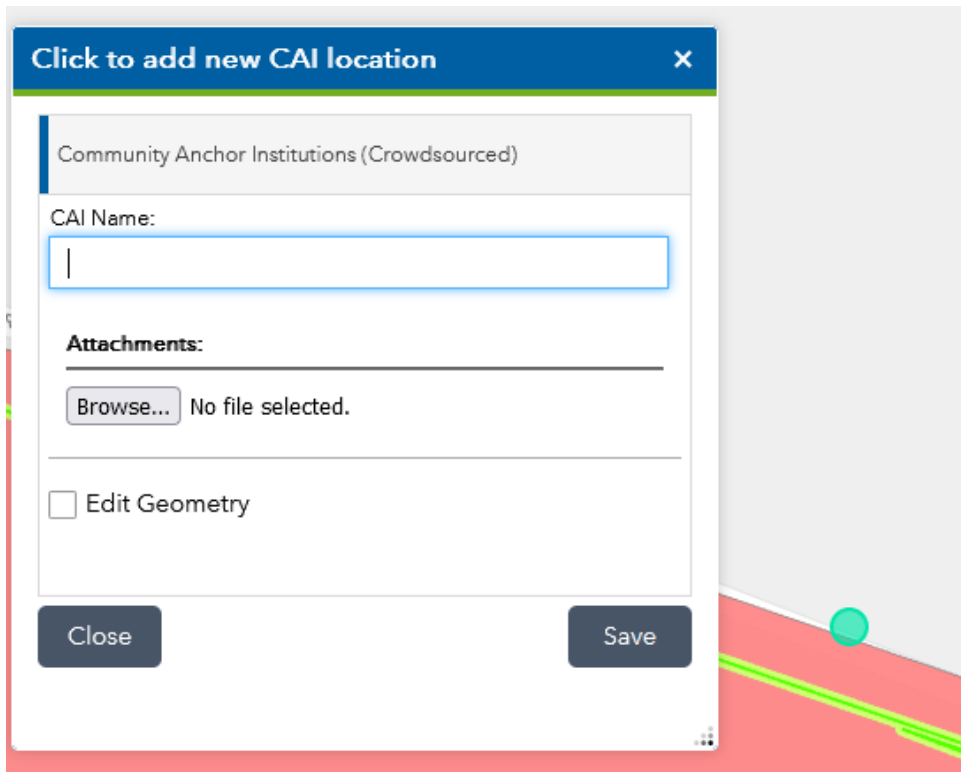


Click on the green pin icon on the tool window, as shown. It will display a blue selection box around the tool. Next, hover over the map with your mouse cursor. A tool-tip will appear beside the mouse cursor, indicating that a new point can now be added to the map. Click on the map to add the new pin.



After adding the pin, the tool window will change as shown on the next page.

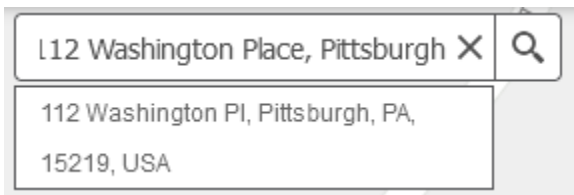
A temporary placemark will be added to the map. Type the name of the location to be added in the "CAI Name: " text box in the tool window, then click the Save button to add the pin to the map.



The newly-created pin will appear on the map, as shown below:



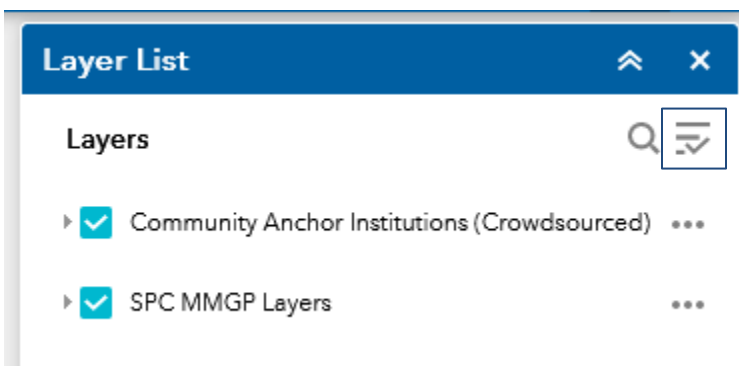
#### 5) “Find address or place” toolbar



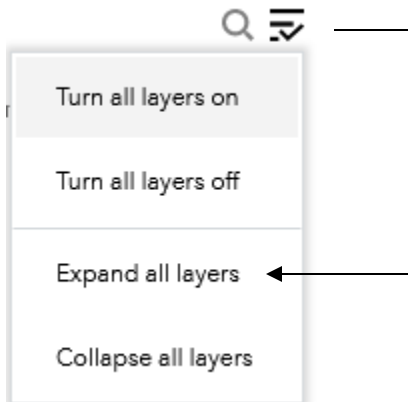
Use this toolbar to search for specific address locations. Partial matches will be suggested below the toolbar.

#### 6) “Layer List” button

Clicking on the “Layer List” button will open the *Layers* panel, which allows the user to toggle specific map layers on and off.



Click the right-hand Layers icon (3 lines with a checkmark) to access the following menu:



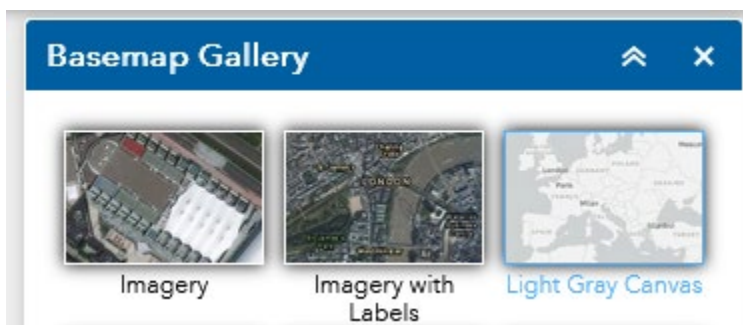
Choosing the “Expand all layers” option will display all of the layers on the map, with their accompanying unique cartographic design (symbol, shape, color, etc.).

This panel will remain “on” until closing it by clicking the “X” button in the upper-right-hand corner of the panel’s header, or collapsed by using the double-arrow icon.



### 7) “Basemap Gallery” button

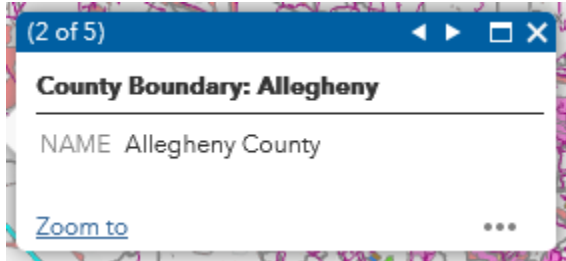
Clicking on the “Basemap Gallery” button will open the *Basemap Gallery* panel. This option allows the user to select a different base map for the web mapping application, including aerial imagery, streets view, topographic view, and more. Click on the basemap thumbnails, as shown below, to change the web mapping application’s background view.



## 8) Interactive Map panel

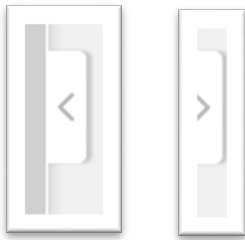
This portion of the web mapping application is the “main stage” of the mapping content.

Click on elements in the map to display *map tooltips*. Use the left and right arrows to scroll through the tooltips for all of the available map layers for that selection area.



## 9) Legend panel

Click the tab button on the center-right side of the *Legend* panel to collapse the panel to the left side of the screen. This will increase the viewing area of the interactive map panel. Click the panel again to store the full *Legend* view. (Note that the arrow shown on the tab will change direction, as a visual cue.)



## 10) Attributes Table panel

Click the tab button at the bottom-center of the screen to view the *Attribute Table* for each layer, which are shown as individual tabs within the panel window. Click a row in the table to zoom to that specific feature on the map.

Company	StAdrs	StCity	StState	StZip	PrmNAICS	PrNAICSD	COName
PRESBYTERIAN CHURCH	WASHINGTON ST	PARKER	PENNSYLVANIA	16049	813,110	Religious Organizations	Armstrong
IMPERIAL NAZARENE CHURCH	507 ROUTE 30	CLINTON	PENNSYLVANIA	15026	813,110	Religious Organizations	Beaver
IMPERIAL CHURCH OF THE NAZARENE	184 KINGS CREEK RD	GEORGETOWN	PENNSYLVANIA	150439517	813,110	Religious Organizations	Beaver

117 features 0 selected