



NEVI Community Charging Program: Southwestern Pennsylvania Commission MPO

Action Item: Planning Partners are developing Community Charging Use Case Rankings and Lists of Priority Communities for submission to PennDOT in 2025.

This and the corresponding page intends to help Planning Partners and their constituent communities understand the funding available through Pennsylvania's NEVI formula funds.

Background: The Bipartisan Infrastructure Law (BIL) established the National Electric Vehicle Infrastructure (NEVI) formula program allocating \$5 billion establishing electric vehicle (EV) chargers along EV Alternative Fuel Corridors (AFCs) and other strategic locations nationwide.

NEVI Formula Funding: Pennsylvania has been allocated \$171.5 Million and has a projected allocation breakdown of:

- \$55-65 million to fully build out AFCs (completed first)
- \$70-80 million to community-focused charging use cases
- \$10-15 million to corridor connections complementing AFCs for long-distance travel
- \$4-6 million for EV workforce development
- \$5-10 million for other critical EV investments

Community deployments will be carried out in collaboration with Planning Partners. Planning Partners are expected to work with their local municipalities ensuring NEVI charging infrastructure meets local community needs.

For more information, refer to the [PennDOT NEVI webpage](#).

Questions or comments? Email the PennDOT EV resource account, ra-pdevcorridors@pa.gov

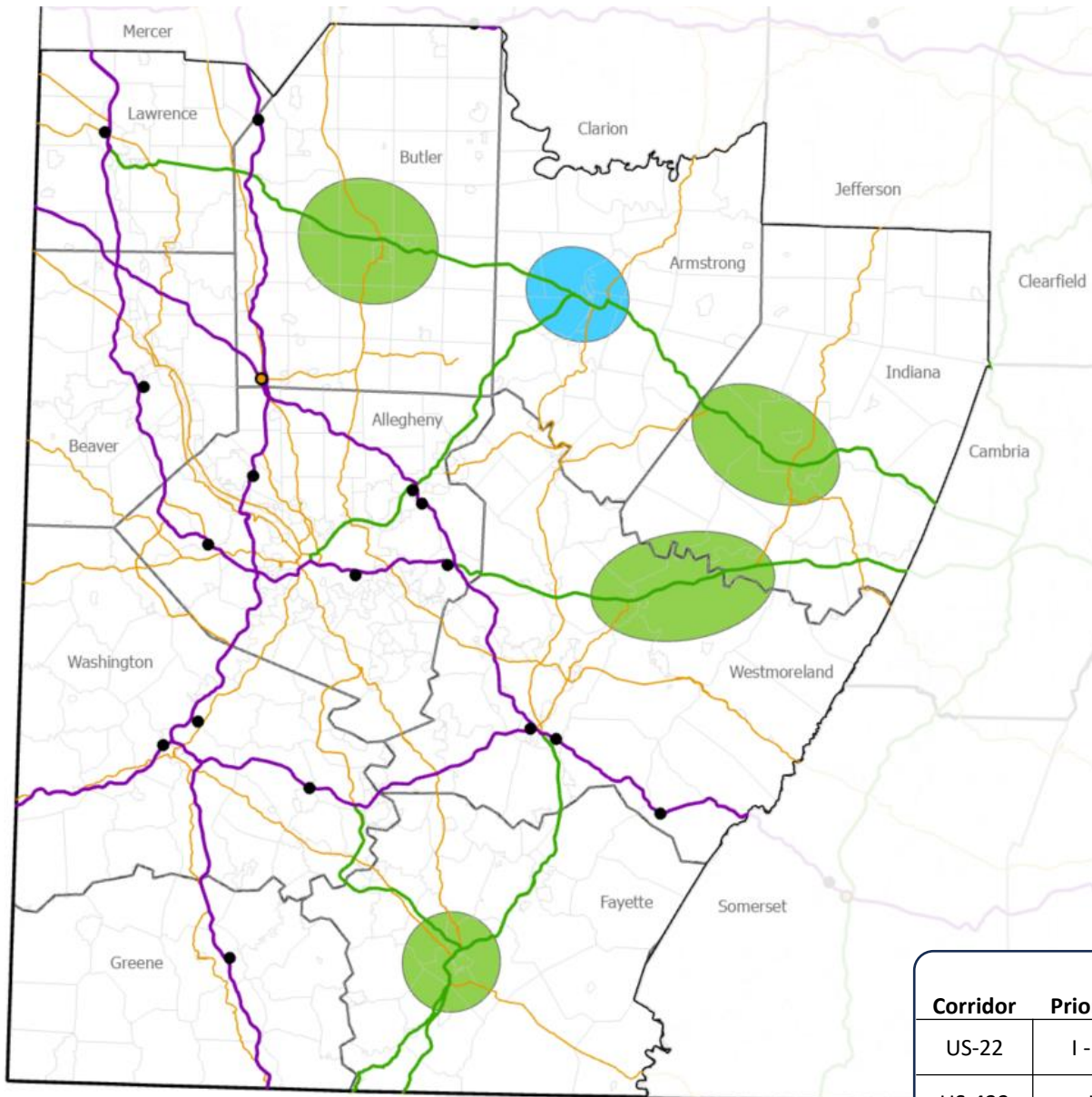
NEVI-FUNDED AFC DCFC STATIONS

Station	NEVI Funds	County	Municipality
Comfort Suites - Coraopolis	\$380 K	Allegheny	Findlay Township
Sheetz - Pittsburgh	\$770 K	Allegheny	Harmar Township
Giant Eagle - Pittsburgh	\$600 K	Allegheny	Pittsburgh City
Penn Place Shopping Plaza - Monroeville	\$540 K	Allegheny	Monroeville Borough
Sheetz - Sewickey	\$680 K	Allegheny	Ohio Township
PTC Service Plaza - Verona	\$370 K	Allegheny	Plum Borough
GetGo - Monaca	\$630 K	Beaver	Monaca Borough
Love's - Slippery Rock	\$630 K	Butler	Worth Township
Sheetz - Waynesburg	\$260 K	Greene	Franklin Township
Sheetz - New Castle	\$220 K	Lawrence	Union Township
Coen Markets - Bentleyville	\$610 K	Washington	Bentleyville Borough
Sheetz - Washington	\$640 K	Washington	North Strabane Township
GetGo - Washington	\$640 K	Washington	Washington City
Coen Markets - Donegal	\$610 K	Westmoreland	Donegal Township
PTC Service Plaza - Hunker	\$400 K	Westmoreland	Hempfield Township
Sheetz - New Stanton	\$280 K	Westmoreland	New Stanton Borough

Note: Level 2 charging projects will be allowed for Community deployments. Level 2 projects typically have a lower overall cost, but usually result in less charging capacity/power per dollar of investment than DC fast chargers.



NEVI Community Charging Program: Southwestern Pennsylvania Commission MPO



Legend

- FHWA-Designated EV AFCs:**
I-70, I-76, I-79, I-376
- PennDOT's Proposed Corridor Connections:**
US-22 (I-76 to I-99), US-119 (S of I-76), US-422, PA-28 (S of Kittanning), PA-43 (S of I-76)
- Other Routes of Significance:**
I-279, I-376 Bus., I-579, U-19, US-22 (W of I-376), US-30, US-40, US-119, US-224, PA-8, PA-28 (N of Kittanning), PA-43 (N of I-70), PA-51, PA-56, PA-60, PA-65, PA-66, PA-228, PA-576
- NEVI-Funded AFC DCFC Station**
- Existing NEVI-Creditable AFC DCFC Station**
- Priority 1 Corridor Group**
- Priority 2 Corridor Group**

NEVI FUNDING PROJECTIONS

County	Total NEVI Funding	AFCs	Corridor Connections	Community Charging
Allegheny	\$10.5-12.2 M	\$3.3 M	\$0	\$7.2-8.9 M
Armstrong	\$0.9-1.3 M	\$0	\$500-800 K	\$350-500 K
Beaver	\$1.4-1.6 M	\$630 K	\$0	\$0.8-1.0 M
Butler	\$2.0-2.5 M	\$630 K	\$500-800 K	\$0.9-1.1 M
Fayette	\$1.2-1.8 M	\$0	\$500-800 K	\$700-950 K
Greene	\$0.3-0.4 M	\$260 K	\$0	\$75-100 K
Indiana	\$0.8-1.2 M	\$0	\$500-800 K	\$250-350 K
Lawrence	\$0.7-0.8 M	\$220 K	\$0	\$450-550 K
Washington	\$2.7-2.9 M	\$1.9 M	\$0	\$750-950 K
Westmoreland	\$3.4-4.1 M	\$1.3 M	\$500-800 K	\$1.6-2.0 M
Total	\$24-29 M	\$8.2 M	\$2.5-4.0 M	\$13.1-16.4 M

CORRIDOR CONNECTIONS PROJECTED STATIONS

Corridor	Priority / Group	County	Municipalities in Corridor Group
US-22	I - Blairsville	Westmoreland	Blairsville, New Alexandria, Burrell Twp, Derry Twp, Salem Twp
US-422	I - Butler	Butler	Butler, East Butler, Butler Twp, Center Twp, Connoquenessing Twp, Franklin Twp, Summit Twp
US-422	II - Kittanning	Armstrong	Kittanning, West Kittanning, East Franklin Twp, Manor Twp, North Buffalo Twp, Rayburn Twp
US-422	I - Indiana	Indiana	Indiana, Shelocta, Armstrong Twp, White Twp
PA-43	I - Uniontown	Fayette	Uniontown, Georges Twp, North Union Twp, South Union Twp

Note: Corridor Groups are enlarged to show the area where PennDOT will be seeking applications for EV charging stations locations for Corridor Connections. PennDOT is developing precise eligibility polygons that will show where project can apply within the Corridor Groups. Refer to the Corridor Connections Projected Stations table for a list of municipalities that may be covered in part by the eligibility polygons.